

THE PRESS

BAZAAR

Reaching
13,500
Northern
Connecticut
Homes

Rural Route or
Box Holder

BULK RATE

U.S. Postage 2 $\frac{3}{4}$ c Paid
Thompsonville, Conn.
PERMIT NO. 14

VOL. 1, NO. 13

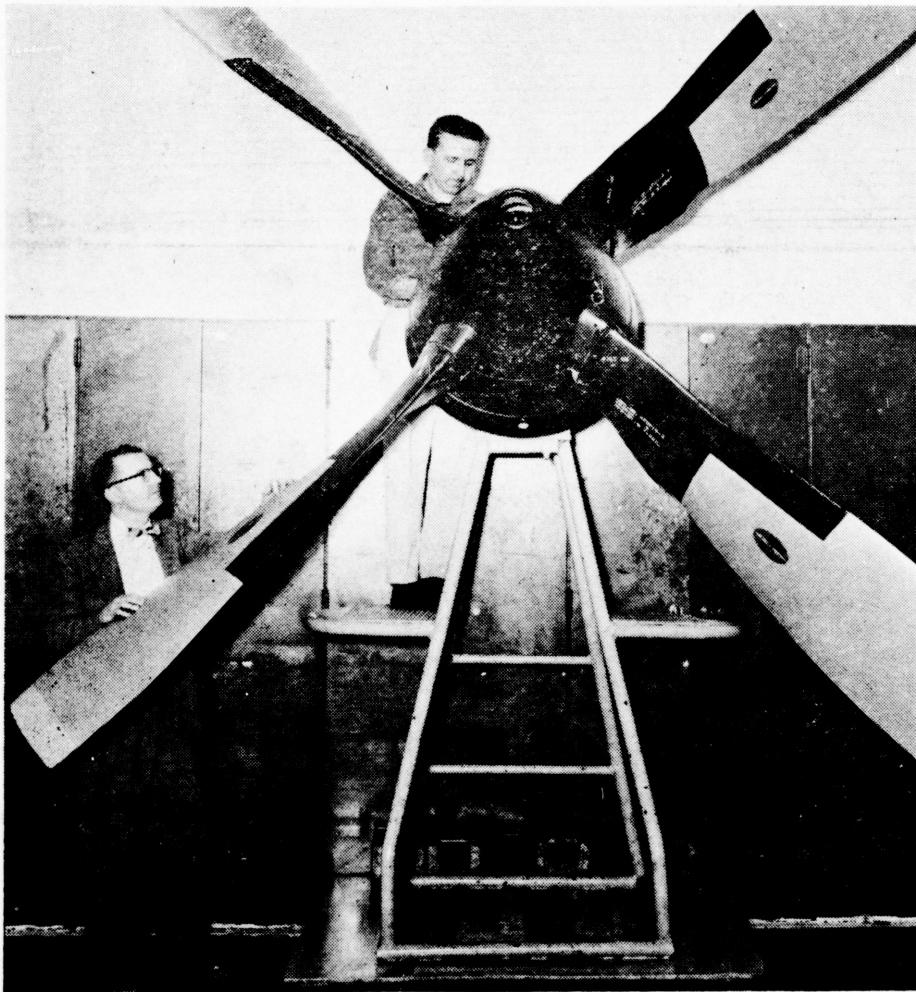
• Published By THE THOMPSONVILLE PRESS, 71 Church St., Thompsonville, Conn. •

WED., APRIL 15, 1964



In the chorus at last Friday's variety show put on by the Combustion Engineering Employees' Club: top row—Diane Ingraham, Hazardville; Carol Viti, West Hartford; Elaine Kaczorowski, Windsor; Ruth Spencer, Hazardville; Joyce Palmer, Granby; Diane Fournier, Windsor Locks; bottom row—

Marilyn Lague, Somers; Diane Skower, Thompsonville; Michelene Scheele, Windsor Locks; Carol Smola, Hazardville; Nancy Colton, Windsor Locks; Nicole Ferland, East Hartford.



All Work And No Play . . .

At space-minded Hamilton Standard, an Apollo space suit back pack (below) is checked before being placed in an altitude chamber which subjects it to conditions similar to the hostile environment of outer space. But diversification is the word at Hamilton and a more down-to-earth product, the aircraft propeller (see left), continues to be a major product line. Above: some Combustion Engineering employees who should qualify for membership in the All-Work-And-No-Whirl-Makes-Jane-A-Dull-Girl Club. What's the prospect for work (and play) at area plants such as these? For one reporter's findings, see the Bazaar special report beginning on Page 2.



OPEN WED., THURS., FRI., & SAT. 'til 9

W. T. GRANT CO.

DOWNTOWN THOMPSONVILLE

See the application for a charge account in the Grant Section of today's Bazaar

OPEN WED. THRU SAT. 'TIL 9





"I've got a lot of part time workers . . . at full time salaries, of course!"

Overtime — Or A Pink Slip?

A Bazaar survey on the employment outlook hereabouts— which is being shaped by such diverse factors as the lung-cancer scare and a Presidential election.

What's the job outlook for Northern Connecticut in the months ahead? Will it be a better or worse place for a skilled worker to live and find employment? Combing financial statements and talking to spokesmen for industry in the Tobacco Valley area, reporter Mary Jo Descy pieced together the report below.—Ed.

A survey of some of the industries in the area — large and small — shows that employers are not, generally speaking, panting after employees. Nor will they be, barring unforeseen and unlikely developments, for the remainder of 1964.

This will come as a surprise to practically no one, least of all to the more than 1,000 peo-

ple in the area now seeking jobs. The Connecticut State Employment office in Thompsonville, serving this part of the Northern Connecticut area, which includes East Windsor, Suffield, Somers, and Enfield, says that 1,100 people are registered for work but that job placement is difficult. Increased needs for specialized skills is



It's Springtime in Connecticut!

Time to get outside and have a little fun... the happy months are ahead! If you need a new car, home repairs, or you want to pay off some worrisome bills... a low cost instalment loan from your Connecticut banking center can make you feel as free as the breeze, as happy as a lark. So go ahead... go fly a kite, we'll help you solve all your money problems.



THE CONNECTICUT BANK AND TRUST COMPANY

32 OFFICES SERVING 24 GROWING CONNECTICUT COMMUNITIES

MAIN STREET, SOMERS

ENFIELD STREET, THOMPSONVILLE

MEMBER FEDERAL RESERVE SYSTEM

MEMBER F.D.I.C.

one factor accounting for this.

Further reductions in work force, moreover, are expected at Pratt and Whitney and at United Aircraft as a whole, although Hamilton Standard expects to be "stable" for the remainder of the year. Kaman has recently announced a lay-off affecting 300 employees due to a move of some of its assembly work to its Moosup plant.

Despite these developments, a cheerful unemployment figure for the Hartford labor-market area, of which this area is a part, comes from the State Labor Dept. Mid-March showed an unemployment percentage of 4.2, which compares favorably with the over-all Connecticut percentage of 5.3. The Hartford area is second lowest to New London (3.4). Joblessness in the state is at its lowest level for any March since 1957.

Unemployment compensation claims locally stand currently at 865 and the Thompsonville unemployment office says that claims are declining at about 50 a week. Further reduction in compensation claims are expected when construction, tobacco, and other seasonal workers go back to work.

The cigarette cancer scare is one factor that will lead to increased jobs for tobacco workers this year, says William G. Clark, Farm Placement man for Connecticut State Employment.

"The ladies are smoking a lot of cigars — the small ones, of course — since the Surgeon General's report, and I would say that this is one reason why it looks as though there will be about four or five hundred more acres planted to shade tobacco. The fire-cure method, which we have been experimenting with since we copied the idea from Cuba, will probably be used to some extent during 1964, and this will mean additional employees."

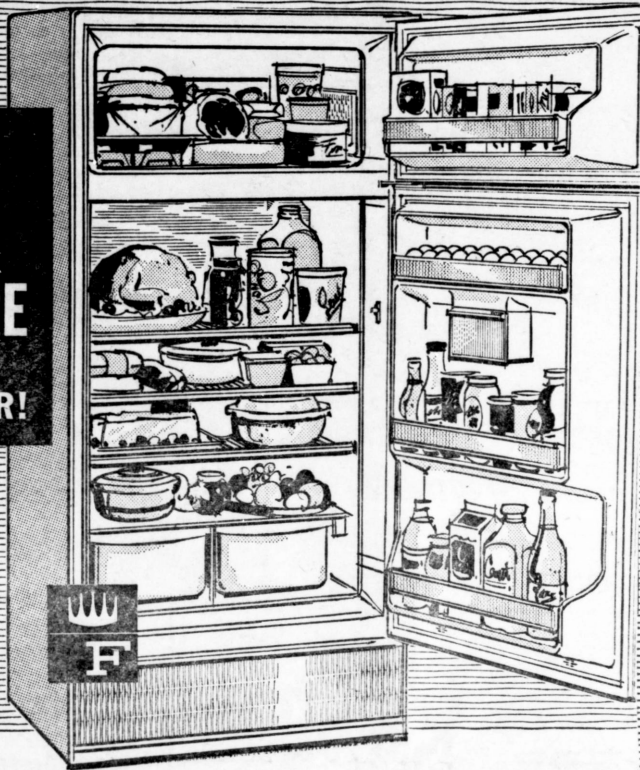
There was a total of 16,000 employed in tobacco in Connecticut last year at peak season, and Clark predicts there will be an increased need of about 1,500 workers, about 40 per cent of which will come

(Continued on Page 14)

Quality Costs Less at.....



LOWEST PRICED FRIGIDAIRE 2-DOOR REFRIGERATOR!



Model FDS-13T-2
13.24 cu. ft.

- Giant 100-lb. zero zone freezer—with two Quickube ice trays—has its own door!
- Dependable automatic defrosting in the spacious refrigerator section.
- Twin Porcelain Enamel Hydrators for fruits and vegetables.
- Deep-shelf storage door holds even 1/2 gallon milk bottles!

\$248

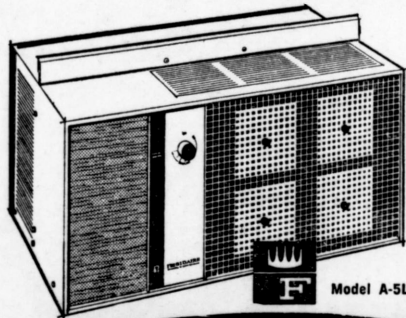
OTHERS FROM \$189



26 Models on Display

Listen to the still, small voice of **QUIET COMFORT**

New! Thrifty! FRIGIDAIRE "Take Home" Room Air Conditioner



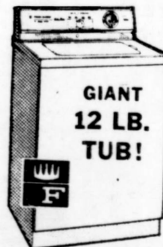
Model A-5LH

- Install-it-yourself! No special tools required. Fits double-hung windows up to 40" wide.
- 4700 BTU/hr (NEMA). Cools up to 210 square feet!
- 115 volts, only 7 1/2 amps!
- Adjustable 4-way airflow—256 combinations!
- Single dial. Automatic thermostat control.
- Washable air filter traps dirt, dust and pollen!

\$175 OR 1 PER WK. T.C.

\$156

Frigidaire WASHERS



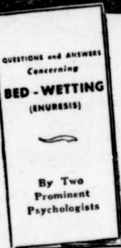
GIANT 12 LB. TUB!

AS LOW AS \$224 PER WK.

LaRussa's

Downtown Thompsonville, 12 Pearl St., RI 5-5595

FREE 10-Page BOOKLET



Answers
Your
Questions
About

DRY BED* TRAINING

*When not caused by organic disease or defects.

The ENURSTONE METHOD is a safe, simple way to stop bed wetting. Recommended ages 4 through 50.

MAIL COUPON TODAY

ENURSTONE of NEW ENGLAND, INC. 292 Worthington St., Springfield 3, Mass.

Name
Subject Age
Address
City State

TP-4-15

Shopping with Mim



You may have assumed, as I only carpeting — but I was did from its name, that Murray pleased to find that they also Carpets, at 270 Enfield St., sell carry a complete line of bed-

ding. Right now they're offering a very good buy on a maple spindle-bed with 2½-inch post, in twin size, complete with Gold Bond box spring and mattress, guaranteed five years. You'd expect to pay much more than the modest price on the tag — \$69.95. Murray's also have, for growing families, the same items in bunk beds, starting at \$99.50 complete.

Enfielders galore, when they're in a hamburger or barbecued-

chicken mood, think of the Chef's Pavilion, next to the Mountain Laurel, on Enfield St. So I'll aim this invitation primarily to out-of-town readers: Come over and sample some of the Pavilion specialties. Conveniently, the take-out window is now open, so come as you are!

What a delight it was for me to browse in the colonial atmosphere of Laurel Furniture, Enfield St. at Elm. I was enchanted by a framed "Stitched 'n Stuffed"

Declaration of Independence, complete with olive branch, flags, and golden eagle superimposed on the historic wording. Delightful, too, were small framed "Paths of Learning" with illustrated grammar lessons. I might have been completely lost in time and forgotten that I'm a working gal — (this is work?) — had it not been for the melodic chimes of a grandmother clock to remind me that it was three-quarters past the hour and I had better be getting back to my other duties!



WG—A. M. M. Folsey

138 South Rd.
Southwood
Acres



Double WORLD GREEN Stamps
Every Wednesday
and Saturday evenings
from 6 to 9 p.m.

Popular Fancy New York State
Cream style Corn
10 16 OZ. CANS **\$1**

Popular Fancy N. Y. State
Whole Kernel Corn **8** 16 OZ. CANS **\$1**

Chicken of The Sea
Tuna Fish **3** REG. CANS **79c**

FREE one pound package of PRINCE THIN
SPAGHETTI
with purchase of two jars of
Ragu Spaghetti Sauce
2 JARS FOR **77c** \$1.03 value for only 77c

Popular Fancy
Softener GALLON BOTTLE **89c**

Calo Cat and
Dog Food **8** 15½ oz. cans **\$1**

FREE PACKAGE OF MY-T-FINE PUDDING
with purchase of 3 pkgs. at regular price

cello packed
TOMATOES
2 VUE-ALL PKGS. OF FOUR **39c**

CLIP THIS COUPON
100 FREE WORLD GREEN STAMPS
with purchase of \$5. or more at
Popular Market, Hazardville,
no stamps with cigarettes
Valid Thru Saturday, April 18

SELECT CHOICE
SIRLOIN STEAKS
Popular Grand **79c** lb
Champion Quality
Porterhouse Steak **89c** lb
Minute Steak **99c** lb
Top Round Steak **99c** lb
Fresh Stewing Beef **69c** lb

SELECT CHOICE
Bottom Round ROAST
Center Cut **89c** lb
No Fat Added
Minute Maid or Snow Crop
Orange Juice 6 OZ. CAN **29c**

Ladies: We have in town a trained fitter of foundation garments. Mrs. Crichton, of Crichton's, 55 Pearl St., attended Warners fitting school in New York a year ago, in an exhaustive four-day training class. She can fit ladies in her shop in all Warners, Maidenform and Playtex, girdles in maternity and regular styles, and panty girdles. She also carries bras in the new stretch-strap, strapless, maternity, and longline styles, as well as garter belts.

For a touch of gaiety in your home, try bright straw "Mardi-Gras" wastebaskets from Gatto's Gift Dept., 546 Enfield St. These are plastic lined, come in cheery colors of blue, red and yellow,



"I think it's putting on 100 much weight!"

ENFIELD YARN SHOPPE
QUALITY YARNS and ACCESSORIES
FREE INSTRUCTIONS (for our Customers)
7 North Main Street
Thompsonville
Connecticut
RI 5-6800

RENT AN **ELECTRIC WATER HEATER**
\$2 a Month
See Us Now
LaRussa's
Appliance Store
12 Pearl St., Thompsonville
RI 5-5041 RI 5-5595
your authorized Hoover Service Center

and have felt coin-dots scattered hither and yon. Another item in this collection from Italy is straw serving baskets which can be dunked in suds for easy cleaning. They come in yellow, red, and natural, at \$1.69.

Mother's Day will be upon us before we know it and in anticipation of that fact, Spaulding Gardens, in Downtown Thomp-

sonville, reminds you that it's not too early to think of wiring flowers to your mother — or wife. Use the **Flowers-by-wire Selection Guide** and order flowers by number — so easy! By ordering early, you can save the expense of telegraph charges, as the orders will be airmailed in plenty of time.

See you next week.



Towns To Get \$13 To \$25,048 In Lieu of Taxes From State

During the current fiscal year, Connecticut towns will receive \$451,994 from the state government as compensation for revenues they have lost on tax-exempt, state-owned land within their borders.

One hundred and fifty-two of the state's 169 towns qualify for such grants in lieu of taxes.

In this area, the amounts to be paid to the towns range from \$13 for Windsor to \$25,048 for Windsor Locks.

Other sums in the area: Enfield, \$8,604; Somers, \$3,079; Ellington, \$825; East Windsor, \$2,694; Suffield, \$5,000; East Granby, \$5,000.



Modern Appliances Help You Live Better...
AUTOMATICALLY... See Your Dealer

IT'S A BIG REFRIGERATOR PLUS A...

167-lb.

"ZERO-DEGREE"
FREEZER!

RCA Whirlpool
14 CU. FT. REFRIGERATOR-FREEZER

- Automatic-defrosting refrigerator section
- Built-in egg racks and butter keeper
- Slide-out meat pan
- Glide-out shelf
- Bushel-size twin crispers
- Tight-sealing Million-Magnet® doors
- Plenty of storage space in doors

SPECIAL LOW PRICE!

Model ELB-14S

13 cu. ft. FAMILY SIZE REFRIGERATOR

- Door Holds 1/2 Gal. Bottles
- Glide Out Meat Tray
- Porcelain Crisper
- Butter & Egg Storage
- Full Width Freezer
- Modern Built-in Styling

ONLY **\$188**



Whirlpool



EJL-13C



LMA-250



Whirlpool

2 SPEED 2 CYCLE Fully Automatic Washer

- 3 Water Temp (including cold water wash and run)
- Built In Lint Filter
- Water Level

ONLY **\$198**

Gattos' Servicemen Are RCA Whirlpool Factory Trained

W.G.—Foster N. Perry, Supt.

WEEKLY TAB SPECIAL
OUTSIDE TV ANTENNAE
BOW TIES **\$129** VALUE \$3.50
WED. THRU SAT. ONLY

GATTO'S

MUSIC and APPLIANCE CENTER

546 ENFIELD STREET, THOMPSONVILLE, CONN.

Tel. RI 5-5352



FOR BAZAAR AD RATES
CALL WALTER BROOKS, RI 5-3348



Betty Brown

Comedienne - Singer

IN THE
TACK ROOM
FROM 8 P. M.
THURSDAY
FRIDAY
SATURDAY
EVENINGS



● Steaks ● Chops ● Sea Food

● Wed. Nite - Italian Menu

● Sat. Nite - Prime Ribs of Beef

PRIVATE PARTIES and BANQUETS

DUNN'S RESTAURANT and LOUNGE

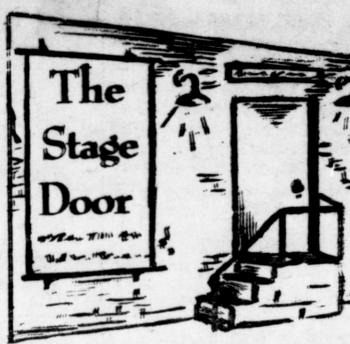
Route 5 — Open 7 Days — Enfield

S.R.O. — these star-studded letters welcomed the Hartford Stage Company as a brilliant production of "Othello" launched the first season of this new repertory company. Enthusiastic first-nighters turned out in all their finery for the inaugural performance and as we

parked our car in the convenient lot at the corner of Kinsley and Market Sts., we admired the ladies arriving in their elegant formal and wished we were the type for a trailing gown instead of the uniform "little black nothing."

As we approached the theater marquee facing Constitution Plaza we met Judge and Mrs. Howard Alcorn, Barbie and Dave Coffin and Marcia and Meade Alcorn, all of Suffield. Marcia had rushed over from Broadcast House, where she had appeared on "What in the World," and had made a quick change into a beautiful floor-length formal designed by Ceil Chapman in a luscious shade of sea-green. Barbie looked lovely in powder-blue satin, the bell-shaped skirt sweeping the floor and Mrs. Howard Alcorn was handsome in a pretty shade of teal blue.

The powerful Shakespearean drama was polished in every detail, for Jacques Cartier is an exacting director, striving for perfection with his talented company. Clayton Corbin gave



By Priscilla Wells

a magnificent portrayal as Othello, the Moor from Venice who wins the affections of Desdemona — interpreted with beauty and compassion by Alison Howard. Although the lengthy passages taxed Mr. Corbin's articulation, his violent scenes were well played — Desdemona's strangulation, the attempt to kill Iago, his own self-destruction.

Charles Kimbrough gave a cunning and mischievous performance as Iago, although younger and more glib in speech than anyone I had ever seen in the role before. I especially like John Coe, a Hartford native, who played Barbantio, and thought his diction and acting style were more in the Shakespearean tradition. Other strong characterizations were turned in by Gene Nye as Roderigo and Elaine Winters as Emilia.

I was as nervous as an old mother hen watching drama students, Paul Skowran and John Ashton in bit parts and I knew John's hand was numb as he held that lighted torch.

(Continued on Page 11)

MUST BE ORDERED BY APRIL 31st

How could there be a more appropriate gift for her day.

MOTHER'S DAY May 10



The Name is Registered The Design is Patented
Tian the
"MOTHER'S RING"

The gift of a million happy memories

Twin bands of 14 Karat gold, which symbolize Mother and Father, are joined by lustrous synthetic birthstones, one for each child in the family.

Buy with confidence, ONLY the "Mother's Ring" carries a tag with U. S. Patent #186,183... Look for it.

Marek Jewelers

PEARL STREET
DOWNTOWN THOMPSONVILLE



Esso

LOWEST COST BURNER REPAIR PARTS & SERVICE PLAN EVER

WE WILL REPLACE OR REPAIR ALL THE FOLLOWING

\$1 PER MONTH

- | | | |
|----------------------|--------------------------|---------------------|
| 1. OIL PUMP | 7. TRANSFORMER | 13. AIRSTAT |
| 2. BURNER MOTOR | 8. FAN and LIMIT CONTROL | 14. OIL FILTERS |
| 3. CIRCULATOR MOTOR | 9. AQUASTAT | 15. FAN |
| 4. BLOWER MOTOR | 10. STACK CONTROL RELAY | 16. NOZZLE |
| 5. LOW WATER CUT-OFF | 11. THERMOSTAT | 17. 24 HOUR SERVICE |
| 6. NOZZLE ASSEMBLY | 12. PRESSURE CONTROL | 18. ANNUAL OVERHAUL |

• No Gimmicks • No Strings • Just Facts

WG—Richard H. Bowers, Somers

CALL C. R. BROME



RI 9-6090

IF NO ANSWER CALL NO 8-7307

Call Before 5 p.m. Friday



50 GALLONS of Esso OIL FREE
To Every New Customer whether or not you take the Burner Service Plan





BIG BUNNY'S

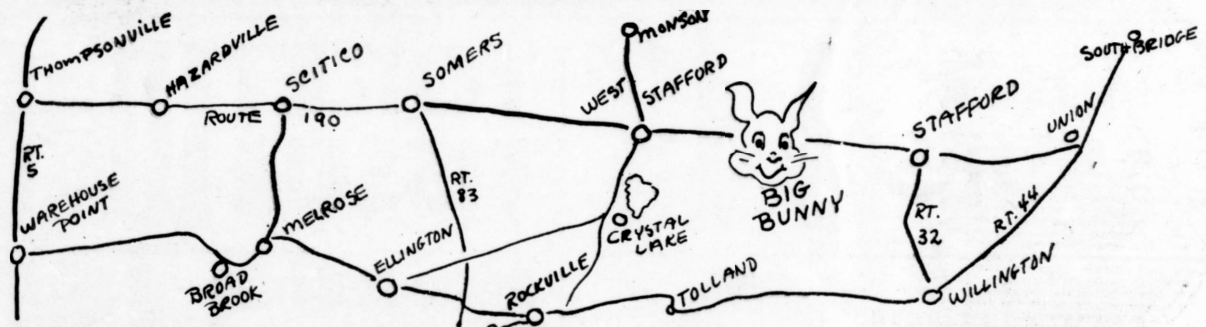
ROUTE 190, WEST STAFFORD, CONN.

10 BIG DAYS
APRIL
15 - 25

SPRING FOOD SALE

AREA'S BIGGEST & NEWEST DISCOUNT SUPER MARKET

featuring quality foods at discount prices. You don't gamble when you shop BIG BUNNY, because we guarantee everything we sell. You save while you shop for food. CHECK THESE PRICES. OPEN WED., THUR., FRI. 'TIL 9.



5 lb BAG OF
SUGAR
59¢

Limit 2 to a family after \$5 purchase

LELAND FARMS
**COTTAGE
CHEESE**
1/2 lb pkg. **10¢**

FRESH LOAF OF
BREAD
13¢

WHY PAY MORE? SAVE \$2 - \$9 WEEKLY!

Better Quality Food More Food Savings

AT BIG BUNNY YOU SAVE MORE

RED & WHITE PURE VEGETABLE - SAVE 12c
SHORTENING 3 LB CAN **57¢**

ARMOUR GRADE A
BUTTER **59¢** lb
Limit 2 to a family after \$5 purchase

RED & WHITE EVAP.
MILK **11¢**
TALL CANS

SUN SPUN
MARGARINE **13¢** lb

TETLEY 100 COUNT
TEA BAGS **79¢**
SAVE 37c

POLAR FULL QUART
SODA **5** **\$1**
FOR CONTENTS

ICE CREAM
PLASTIC PAC
Half Gallon **69¢**
SAVE 30c

Facial 400 Count
TISSUES **3** FOR **49¢**

TOILET TISSUE **10** ROLLS **69¢**

FROZEN
FRENCH FRIES OR WAFFLES **8¢**
PACKAGE

MORTON'S FROZEN
Chicken, Beef or Turkey
MEAT PIES **15¢** E.A.

APPIAN WAY
INDIVIDUAL
PIZZA **9¢** E.A.

FROZEN FRENCH FRIED
TATER BUDS **29¢**
BUY A POUND FOR GU ON FR

Shop for Savings in e

RE ON YOUR FOOD WHY PAY MORE

TOP QUALITY MEAT AT PRICES YOU CAN AFFORD

U.S. CHOICE GOVERNMENT INSPECTED

Top Round or Face Rump

STEAK 75 ¢ lb

U.S. CHOICE GOVERNMENT INSPECTED

Top Round or Bottom Round

ROAST 59 ¢ lb



SAVE OVER ONE DOLLAR ON JUST ONE ROAST!

EYE Round Roast	89 ¢ lb	Beef Shank - WOW -	39 ¢ lb	Colonial Franks	47 ¢ lb
-----------------------	----------------	--------------------------	----------------	--------------------	----------------

SWIFT'S FRI-PAN BACON	37 ¢ lb	ARMOUR STAR Bologna Liverwurst BY THE PIECE	29 ¢ lb
---------------------------------	----------------	--	----------------

JUICY SUCCULENT SPARE RIBS	27 ¢ lb	COLONIAL PORK LINK SAUSAGE	49 ¢ lb
--	----------------	--	----------------

PLEASE NOTE!

THESE MEAT PRICES ARE FOR THE FIRST WEEK, APRIL 15 - 21
WATCH PAPERS FOR SECOND WEEK'S MEAT SPECIALS!!!

every aisle

**DO YOU MIND?
PAYING LESS?**

REDEEM THIS COUPON! FULL QUART RED & WHITE

VALUABLE COUPON

GOOD SECOND WEEK OF SALE
ONLY! APRIL 22 to 25

**FREE! Doz. Donuts
Worth 29c FREE!**

AFTER \$5 PURCHASE
LIMIT ONE TO A FAMILY

MAYONNAISE 43¢

RED & WHITE

HEINZ 15 oz.
IN TOMATO SAUCE

BEANS 10¢
TALL CANS

27 OZ. CAN

KLEAR SAVE 26c
WAX 69¢

SCATTER

RUGS 99¢
100% Rayon, Foam
Rubber Back—24x36

12-qt. **39¢**
PAIL

SUNSHINE **25¢**
VANILLA
WAFERS

Cut Beets

Diced Carrots

Potatoes

9 \$
FOR

TALL CANS — RED & WHITE
CUT GREEN or WAX

BEANS

SHELTER
ISLAND
MINCED **CLAMS**

6 \$
FOR

TALL CANS — RED & WHITE

WHOLE KERNEL
or CREAM
or HUNT'S **Corn**

Tomatoes

7 \$
FOR

BUITONI-ROMANI
ALL VARIETIES

Macaroni
FULL POUND

6 \$
FOR

RED & WHITE
GRAPEFRUIT

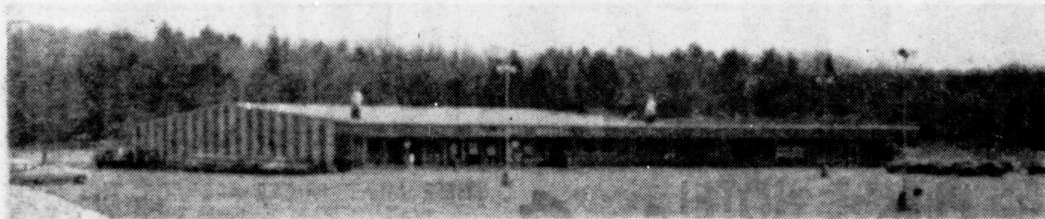
FRUIT COCKTAIL

HUNT'S
2 1/2 CAN **TOMATOES**

4 \$
FOR

Watch For The Grand Opening Of The New National Department Store
Next To Big Bunny In The Stafford Shopping Plaza, Route 190,

Coming
Soon



Watch For Our "In-Store Mystery" Special Each Wed. At Big Bunny

WE RESERVE THE RIGHT TO LIMIT QUANTITIES

Stage Door

(Continued from Page 6)

When his tall banner caught on one of the lights, I almost broke my old lognette, but thank heavens he didn't fall down the stairs! And I was proud indeed of these boys acquiring the professional manner of the theater.

The final applause and bravos were ringing in our ears just after midnight as we headed for the champagne reception at the Hartford Club. The excellent performance had sustained interest for three hours.

A Victorian set with authentic antiques will add another credit to the Suffield Players' well established reputation as "Arsenic and Old Lace" is presented on Friday and Saturday, Apr. 17 and 18 at the Spaulding School. Wonderful people in the cast — Joan Bunting, Peter Dunn (that genial golf pro turned actor); Gil Bissell, Howie Caldwell Jr., Jack Casson, Wayne Opel, Art Bromé, Hinsdale Smith, Mason Nye, Mrs. David Badger, Mr. and Mrs. William Atkinson and Allen Fuller (he'll be a fantastic Teddy Roosevelt). I just can't wait to see these scintillating Suffieldites in this great comedy.

Mary Lou Sullivan, Thompsonville's own sweet songbird, will appear with the Boston Opera Players in Newton on Apr. 25, and on Apr. 29 she'll be heard live on FM-WSCH, Hartford, 8:30 p. m. — the program is "An Evening with Brahms." On May 7 and 8, she will sing the role of "Despina" in Mozart's opera, "Cosa Fan Tutti," in Boston. Everyone who had the rare privilege of attending the concert given by Mary Lou at Enfield High School can appreciate her success in the music world. This young and beautiful artist, trained by Hazardville's Lura Mohrbacher, has an exceptional voice and charming stage presence. Please, Mary Lou, encore Enfield!

Cocktail chatter: Of Course we know the girls in the know are smoking everything but cigarettes—Granny's cornob, cigarettos, Pop's ole stogie and the rancy new cocktail pipes. Did you see that one the pretty gal in Somers is smoking (brought home by her husband, Hartford department store exec?) And how about that gal in Suffield — every time she stokes up the boiler the rhinestones fall out! . . . And did you know that farewell luncheon the Suffield gals gave for Barbara Donnelly at Avon Old Farms Inn didn't break up until 4 p. m. as Nancy, Obie, Hap, June and Babs all said goodbye . . . How many recognized those two good looking blondes at the recent antique show — Marion Starr and Shirley Stinson? . . . Who's the boy sending red roses to the cute teenager on Beverly Drive? . . . Who's the pretty Thompsonville policewoman who wears the yellow mackintosh on rainy days and looks so glamorous with the blue eye shadow? . . . And congratulations to Red and Marcella Howard on the opening of their fabulous new Western shop in Somers . . . Last Friday we took off for Philadelphia to see the Lippizanner horses and the Howards had just the right trinkets for our horsey friends in Berwyn. The show in Philadelphia was spectacular, although the crystal chandeliers couldn't quite compare with those described by Bob Alcorn, who saw those in the palace ring in Vienna, Hi, ho Silver!

LUMBERJACK STORES™

ONE STOP PERSONALIZED SERVICE



20% OFF

SPRING-TIME IS...
...SCOTTS TIME

NEW!

BIG 10 SALE

Buy any combination of 10 Scotts lawn care products, still America's finest, and save

10%

TREATS 2,500 FT. WAS \$9.95 NOW \$7.95

STOPS CRABGRASS FEEDS LAWN TREATS 2,500 FT. \$9.95

LAND LIME

69¢ BIG 80 LB. BAG

CASH & CARRY

PATIO BLOCKS

27¢ EA.

Size 2"x8"x16"

CASH & CARRY

36" Scroll Top

FENCING

21¢ LIN. FT.

Comes in 100 ft. Rolls

CANADIAN

PEAT MOSS

4 cu. ft. 6 cu. ft.

\$2.99 \$3.99

Fafard-Top Quality

TOOL RENTALS

MAKES HARD JOBS EASY

- ROTO-TILLER
- LAWN ROLLER
- SPREADERS
- EXT. LADDERS
- SAWS
- SEEDERS
- HOLE DIGGERS
- SANDERS

BUY NOW . . . SAVE

22" Power Mower \$39.99

CASH & CARRY

2½ HP Easy Spin Briggs & Stratton Engine In Carton Completely Assembled (Except Handle)

BAY STATE

SHAKE PAINT

\$4.80 GAL.

Factory list \$6.00

CASH & CARRY

5 Gallons or more

Spring is the Wake-up Season...

Wake up your house WITH

BAY STATE PAINTS

FOR EVERY ROOM IN YOUR HOUSE

BAY STATE SUPER

EXTERIOR HOUSE PAINT

\$6.36 GAL.

Factory list \$7.95

CASH & CARRY

5 Gallons or more

Interior PLYWOOD

A D-Good 1 Side

4'x8' Sheets

1/4" — \$2.78

1/2" — \$4.89

3/4" — \$6.27

CASH & CARRY

Aluminum

SCREEN WIRE

9¢ SQ. FT.

All widths in stock

FLUSH DOORS

1 3/8" Hollow Core

2/6 x \$5.40

6/8

2/8 x \$5.70

6/8

CASH & CARRY

SCREENS REPAIRED

Bring in your frames, wood or alum. & we will install new wire

Windsor Locks
36 Suffield St
NA 3-3321

Windsor, Conn.
38 Bloomfield Ave.
Dial 488-3603

Thompsonville
630 Enfield St.
Dial RI 5-333P

Suffield
Mountain Rd.
Dial NO 8-7303

Granby, Conn.
Hartford Ave.
Dial 653-2556

Thompsonville Branch Open
Evenings Wed., Thurs., Fri.
'Til 9 p.m.

HARTFORD AREA Dial 522-2232—SPRINGFIELD AREA Dial 785-1343

Open Daily 8 a.m. to 6 p.m. Friday Evening 'Til 8 p.m.

A DIVISION OF THE WINDSOR LOCKS LUMBER CO.

- Credit Terms •
- Custom Delivery •

OIL COSTS LESS



You'll rave about all you save...

Sunoco Heating Oil

A quality heating oil delivered automatically! Burner service 24 hours a day! An easy-payment plan! Get them all—Get Sunoco Heating Oil. Let's talk.



PLUS:

1. FREE BURNER SERVICE
2. S&H GREEN STAMPS
3. 24-HOUR SERVICE

TROIANO OIL CO.
777 ENFIELD STREET
RI 5-0321



Yankee Trader

(Ads are published free of charge in this column. Simply write down what you want to get rid of — and what you would like in exchange — and send to The Press Bazaar, care of Thompsonville Press, P.O. Box 269, Thompsonville. Please, no swapping of items for cash.)

Swap Cub Scout uniform, size 12, cap, neckerchief, slide, shirt, belt and pants for 2 books S&H stamps. RI 9-7753.

Will swap commercial Frialator suitable for home or restaurant in exchange for 3 books of

stamps; kitchen utility table for 1 book; modern lounge chair for 10 books. Will accept double bedspread or bedroom draw drapes for any of above items. Mrs. Richard Mills, RFD No. 2, Rockville.

Will swap stamps for hitch for 18' trailer. RI 9-3835.

Will swap two baby carriages, spreads, gossip bench for stamps. Mrs. James Hayden, 31 Theodore St., Thompsonville, RI 9-7608.

Will swap 200-250 paperbacks (in lots of 10 or bulk) for condensed Reader's Digest books, stamps or what have you; 6 x 6 beige linoleum tile for 1 book stamps. NA 3-7748.

Will swap all-aluminum Jamesway 10-hole nest for pullets for stamps. RI 5-6386 anytime.

Will swap baby carriage with mattress pad in good cond. for 4 books S&H stamps. NA 3-5629.

Will swap 5 pair "Priscilla" fiberglass curtains, 54" long, 36" wide, ruffled; one pair 50" long, 36" wide; 5 1/2 books S&H or Plaid stamps. New card table cover, plastic quilted, teal blue, for 1 book stamps. New woolen yardage, assorted sizes, for stamps. RI 9-3963.

Would like boy's or girl's 16" two-wheel bike. What would you

like? Mrs. E. Greenlund, 19 Evergreen Lane, Somers, Conn.

Will swap beautiful white strapless gown, ballerina length, white satin cummerbund, size 10, for 5 books of S&H or World Green stamps. Worn twice. Mrs. Darrell Fontaine, 5 Hudson St., Thompsonville.

Will swap female dog, part Collie, part Irish Setter, 7 months old, for loving care in good home. Call after 4:30 p. m. RI 9-9403.

Will swap 7 dozen canning jars for 2 books stamps. RI 5-3835.

Will swap 2 men's navy pea jackets, 1 medium, 1 large, for 3 books S&H stamps each. RI 5-0007.

Will swap high chair, 2 1/2 books stamps; basinette mattress, 1/2 book; Box of new baby toys, 1 1/2 books; new man's nylon beige summer suit (39L), 4 books; baby scales (like new), 2 1/2 books; Dormeyer mixer, 4 books. RI 9-3267.

Rare antique spinet piano, blonde, 85 keys. Made in the early 18th century in Germany. Will swap for brand new spinet piano. Call RI 5-0652.

Would like to swap my rocking chair, also a hassock, for a lime spreader, lawn rake and tools (or stamps). RI 9-4228.

Hedstrom baby carriage with beach wagon sides, converts to stroller, originally \$75, for 7 books stamps. Playtex nurser bottle set for 1 1/2 books stamps. Man's topcoat, size 40, beautiful condition, for 2 books stamps. Ladies' lavender suit, size 9-10, beauty, for 3 books stamps, RI 5-6262.

Will swap for 10 books stamps: brown Coleman parlor oil heater

ATTENTION BOAT OWNERS:

You're off to a good start...



because your outboard motor boat means days of fun—easy handling, speed, reasonable maintenance costs—everything for your enjoyment of sun, sea, and sand.

Have you overlooked the value of that pleasure—and your financial investment? Have you protected it by adequate insurance? Remember your boat and outboard motor are exposed to fire and lightning, theft and collision. Our inexpensive policy safeguards you against these hazards and also indemnifies you for the loss of your motor even when it goes overboard.

Our local agent will be glad to tell you more about the policy. Call him today and start your vacation on an even keel.

CALL OR STOP AT THE

Bagnall Insurance Agency

MAIN ST., SCITICO
RI 9-6387

ELLINGTON
875-5524

ATTENTION!
Boat - Auto - Trucks
Custom Fitted
Morring Covers-Navy Tops
Uphols. Seats-Truck Covers
Auto Seat Cov.-Conv. Tops
KANVAS KINGS
1530 Palisado Ave.
Windsor Locks, Conn.
Phone 688-4577

The "Fun" Shines Bright Outdoors!

"EDUCATION through the medium of RECREATION" Earleen Grove Day Camp

Snipsic Lake Road

Tolland, Conn.

● REASONABLE WEEKLY or SEASONAL RATES ●

Season opens June 29, 1964 and closes August 21, 1964 ● Transportation offered from convenient pick-up points in Somers, Somersville and Hazardville ● 70 acres of land for use of Campers ● Two large fresh water spring fed pools with extensive beach area ● Modern Facilities ● Program planned and supervised by professional personnel ● Program offers: Swimming, Fishing, Land Sports, Handicrafts, Nature Study and Special Events

MAIL THIS COUPON TODAY FOR DETAILED LITERATURE

PARKER ENTERPRISES, INC. (Earl L. Parker) Tel. 875-9322
P.O. Box 146, Ellington, Conn.

Please send me literature on Earleen Grove Day Camp

Name

Address

Tel. No.

with stove pipe, oil drum with faucet, 25 gal. oil, and stand for drum. John Fraro, RI 9-4679.

I have 4½ books World Green, 1½ books Top Value, 1 book Plaid — to trade for 6 books S&H. RI 9-6612.

Good gas hot-water heater and 25-gal. tank to swap for complete fireplace set, Phone 737-5606, Springfield.

Will trade under-dash push-button car radio with antenna for electric carpet sweeper in good condition. TRemont 5-9838, Ellington.

I have love to swap. Wouldn't you like to have me in your home and for free? German shepherd-boxer pup. I love children. But my talents are being hampered by a second dog, and you know how that must make me feel, even though we do have fun. Call Mrs. Newsome, RI 9-3483.

Will swap 4 World Green for 4 S&H — or vice versa. Also Consumer Green for World Green or S&H. NA 3-5039.

Will swap old Hoover upright vacuum for 26" boy's bike; also 2 books Plaid stamps for clean

mesh playpen. RI 5-6239.

Will trade '57 Imperial in good condition for late-model pickup-truck in similar condition. RI 9-7173.

Mahogany dining-room table, 2 leaves and 6 chairs in good condition — will trade for picnic table and benches or set lawn furniture, or 10 books your choice stamps. RI 5-0989.

Florence gas and oil stove (4 and 4) — excellent heater. Will swap for S&H stamps, sturdy dining-room chairs, or what have you. Mrs. C. E. Boyle, So. Main St., Warehouse Pt.

Girl's spring orchid coat, size 14 like new, for book of stamps. Lady's beige winter coat, size 18, for 1 book. Also boy's sport jacket, size 10, for ½ book. RI 5-7550.

Will swap 1958 Mercury Monterey 4-dr. sedan for Chevy or GMC pickup. NA 3-2074.

Will swap 1956 Chrysler 2-door hardtop (runs well) for sporting equipment. Also semi-formal dress (size 10), never worn, \$30 when new, for second-hand desk or old machine cabinet suitable for new portable sewing machine. RI 9-6130.

SAVE FOR A HAPPY FUTURE



COLLEGE HOMEOWNING FUN RETIREMENT

START YOUR ACCOUNT NOW,
ADD TO IT STEADILY AT

The Suffield Savings Bank

MEMBER FEDERAL DEPOSIT INSURANCE CORPORATION

MAIN OFFICE Suffield, Conn., Mon.-Fri. 9 AM-3 PM, Thurs. Night 6-8 PM - SCITICO OFFICE Mon.-Fri. 9 AM-3 PM, Thurs. Night 6-8 PM, Walk-up Windows 3-4:30 PM

OIL IS SAFE



Don't Freeze, we please...
Sunoco Heating Oil

A quality heating oil delivered automatically! Burner service 24 hours a day! An easy-payment plan! Get them all—Get Sunoco Heating Oil. Let's talk.



PLUS:

Every Summer
Every Troiano
Customer Has His
Burner Cleaned &
Checked FREE!

TROIANO OIL CO.
777 ENFIELD STREET
RI 5-0321

Overtime

(Continued from Page 3)
from this area. "And we can't seem to get enough girl workers," he says.

If it is true that political considerations play some part in the employment situation, then 1964 would seem to hold a goodly share of "election-year uncertainties." It would be particularly true for plants engaged to any extent in defense manufacturing, since the attitude of the succeeding administration toward defense spending is an unknown quantity. President Johnson's cutbacks in defense have

had some effect on the aircraft industry, and the muddled results in Republican primaries make for more uncertainties in this Presidential election year.

United Aircraft total payroll at the end of 1962 was 63,461; at the end of 1963 it was 64,670. (The figure as of March 1, 1964, is 63,900, a reduction of 770 since the first of the year.) One U. A. C. division, Pratt & Whitney, which currently employs about 39,000, laid off 1,000 workers last year. Frank Murphy of P & W public relations, says he expects "some reduction" of workers for the remainder of the year, but would make no predic-

tion as to the extent. United Aircraft annual report says:

"Due to the reduction in sales and changes in product mix expected this year, our work force unfortunately must be reduced. This adjustment, we hope, can be taken care of, for the most part, through normal attrition. At the same time, additional employees will be required in technical and engineering categories."

Hamilton Standard, with a fascinating array of new products, appears to be solving the employment situation with diversification, commercialization, and job retraining. Hamilton's Roy Wendell says the plant spent a third of a million dollars last year to retrain 3,800, or nearly half of the approximately 8,000 employees, in special skills. A total of 2,055 of these voluntarily took in-plant classroom training involving machine skills and blueprint reading, then practiced their new skills at a training area in the plant. One thousand six hundred took correspondence courses through the plant in higher mathematics and blueprint reading.

Hamilton laid off 415 workers during the first quarter of this year when the Defense Department shut down manufacture of a plane for which Hamilton was supplying the propellers. The plant expects a "stable employment picture" for the rest of the year, anticipating little in the way of hiring or lay-offs.



Windsor employs some 1,600 people, and M. L. Rasbach of personnel says he does not anticipate any employment expansion in the near future. Combustion general offices are located here and a research and development laboratory, staffed with about 100 engineers and lab technicians, carries on nuclear research.

Combustion, which has many associated companies and employs a total of 16,000, has been

OUTDOOR ANTIQUE FAIR

SAT., MAY 2 - 10 a. m. to 6 p. m.

Rain or Shine

Free Parking — 75 Acres

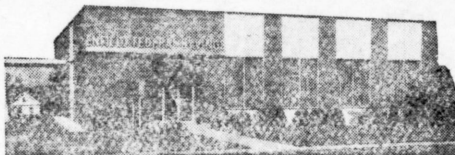
Admission 50c

Dealer Space \$10.00

MERRILL C. CARR FARM

ROUTE 83, SOMERS, CONN.

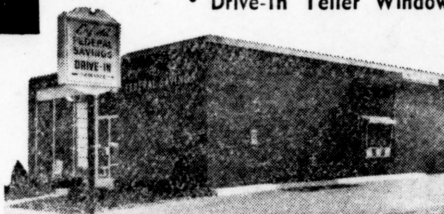
Tel. RI 9-4382



SEE ENFIELD FEDERAL

— FOR COMPLETE SAVINGS SERVICE

- 2 Convenient Offices
- Free Off-Street Parking
- Drive-In Teller Window



— FOR HOME IMPROVEMENT LOANS

- Up to \$3500
- Up to 5 Years

— FOR HOME MORTGAGE LOANS

Member Federal Home Loan Bank System
Member Federal Savings and Loan Insurance Corporation

ENFIELD FEDERAL SAVINGS

AND LOAN ASSOCIATION

660 Enfield St. - Thompsonville • 12 Main St. - Hazardville
Phone Thompsonville Phone Hazardville
RI 8-3381 • RI 8-3382 RI 9-4389 • RI 9-4390

WARM UP THAT COLD ROOM!



... WITH

CHILL CHASER

Here's What You've Been Waiting for To Heat That BASEMENT or BREEZEWAY!

Becomes Part of Your PRESENT HEATING SYSTEM!

Includes: Heating Unit, Circulator Pump, Thermostat & Adjustable Fan Switch \$125

PANELLA'S

Plumbing-Heating-Appliance
North Main St., T'ville

a pioneer in all the "firsts" which make today's mammoth, high pressure, high temperature steam generators possible. Last year, Combustion was awarded, from Consolidated Edison, the contract for the world's largest boiler, a 1,000,000 kilowatt C-E Controlled Circulation Steam Generator. By contrast, Combustion has also installed the boiler system at Somers State Prison, the heating and cooling plant at Constitution Plaza in Hartford, and the heating system at the University of Hartford.

Bigelow-Sanford, the nation's

oldest carpet company and long the bread and butter for the majority of Thompsonville's residents, remains on an even keel. Off some 40 employees in calendar year 1963 — from 860 to 820 — Bigelow has experienced a pickup in recent months.

"The difficulty," says plant manager John Roddy, "is that our Thompsonville operation is concentrating on multi-color carpeting, and in the past year the public has shown a preference for plain fabrics rather than patterned." But, he says, Bigelow "may be hiring a few men, off and on."

Crestliner Boats, at the time a subsidiary of Bigelow, closed their Thompsonville operation last year — but even before then they had ceased actual production locally.

A boon to Enfield is the anticipated construction of the Hazardville area of a W. T. Grant Co. distribution center for all New England — a semi-automatic facility which will have a \$300,000 payroll and is expected to be in operation in a year.

The increased trend toward specialization of skills is indicated on a small scale by the C. H. Dexter & Sons in Windsor Locks. Dexter's payroll stands at about 300 currently; last year they increased their work force by 36, about twice as many as in the previous two years, and this year expect to increase by 40 or so. About half of the 36 hired last year were chemical engineers and technical people. Inasmuch as production workers form a much larger part of the

work force, the percentage shows the increasing importance of advanced education in employment trends.

Hallmark Cards, Inc., in Enfield, employs between 170 and 180 with an additional 70 or so during the Christmas rush, but does not anticipate any expansion in employment "for a year or more."

In road construction, prospects for employment, according to Roncari Industries, will be "at least equal to last year." The building construction outlook is good for this year according to the Dodge Report, so there will probably be somewhat of an increase in jobs in this field over last year.

Speaking of the 1,100 job-seekers in the area, John Moore, manager of the Employment Office, says he would like to take advantage of the Federal Manpower Development and Training Act, which helps set up programs to train people in needed skills. He says he is seeking indications from area employers as to what specialized skills they need. Aptitude tests would be given job applicants and a training program could be set up in cooperation with a school such as the Cheney Technical School in Manchester, or on-the-job training programs could be arranged.

His reasoning is part and parcel of one of the basic employment factors of our time: Those jobs having the greatest growth potential in the years ahead are those requiring the greatest amount of education.



NEW LOW PRICE

ON OUR FAMOUS COMPLETE BURNER SERVICE PLAN.

1963 PRICE — \$2.30

NOW ONLY \$2

A month covers repair, replacement and labor on all these parts of your oil burner (would cost you \$500 to replace):

- Fuel Tank ● Circulator Assembly ● Combustion Chamber ● Blower Fan Motor and Assembly ● Draft Regulator ● Transformer ● Oil Burner Motor ● Stack Relay ● Oil Pump ● Warm Air Limit Control ● Hot Water Limit Control ● Aquastats ● Thermostats ● Oil Burner Fan ● Nozzle ● Miscellaneous Small Burner Parts

— PLUS —

- Mid-Winter Check-up (A KELLER OIL EXCLUSIVE)
- Summer Check-up
- 24 Hour Emergency Service

ALL THIS \$2 PER MONTH

Yours Only At

KELLER

OIL CO., INC.

Call RI 5-3334 Today

we invite you to

DEPEND ON US!

For day-and-night, routine-and-emergency service, for prompt, automatic degree-day delivery of Atlantic's famous triple-refined heating oil, for heating comfort you can really count on, call

FRANK'S

Oil Service

18 CEDAR ST. HAZARDVILLE

RI 9-4392 or RI 9-8028



IF



Roberta the Robin could, she'd get dinner for her family in jig time with a fast, dependable



AUTOMATIC RANGE

SHE CAN'T BUT YOU CAN!

MODERN GAS SERVICE "ANYWHERE"



BRIDGE'S

Main St., Hazardville

RI 9-8321



Health Fair! Free Tests Next Week

How's your health? All residents of northern Connecticut are invited to help get an answer to that question by participating in the Windsor Locks Health Fair next Thursday and Friday from 2-9 p. m. at the Union School on Church St.

The fair, sponsored by the Old County Manor Homeowner's Assn., will offer diabetes screening, free hearing tests, free eye tests for glaucoma, oral polio vaccine, chest x-ray (7-9 p. m. Thursday), a bloodmobile (1-6:30 p. m. Friday) and health films.

The State Department of Health and various health agencies will participate, and there will be a snack bar and door prizes. Admission is free.

The Health Fair is a part of Windsor Locks Health Week, which First Selectman Michael Sartori proclaimed into being Apr. 19-25.



Special Army Inducements For HS Grads

The Enfield-area Army recruiter this week urged high school seniors to investigate the Army's graduate specialist program during the spring vacation.

S. Sgt John Zimmer said seniors scheduled to graduate in June can take a special early option which allows them to choose from a wide range of specialist training.

Under the option, applicants will be accepted before graduation, and have spaces in the training program reserved for them. Applicants must obtain a letter from their high school principal or guidance counselor stating they are likely to graduate, and they must obtain their high school diplomas before entering the program.

Complete information is available at the Army Recruiting Station at the post office building, Thompsonville.

BAZAAR CLASSIFIED

30c A Line Minimum Charge \$1.20

NOTE: We are starting small . . . with the two lonely classified ads below. Our next issue of the Bazaar comes out April 29th. Swap ads are still free.

Upright piano, \$40. Suffield, NO 8-2014.

Sewing machines, 1963 models, never used. Sacrifice \$35. Will take \$1.50 weekly. RI 5-3742.



THOMPSONVILLE PRESS

EMILE W. GRONDIN

ENFIELD
Hardware Center

TAYLOR
Rental Center

RANCH BROOM

"FOUR SEASONS"
BRUSH

REG. \$2.98

\$1.95

• Rugged Union Fibre bristles
• Perfect for garages, patios, basements, sidewalks, driveways; sweeps light snow, leaves, debris
• Sturdy walnut colored handle and block



PEE-WEE
6'
TAPE

SALE PRICE 72¢




16
FOOT
TAPE

SALE PRICE \$3.18




6-FOOT
EXTENSION
RULE

SALE PRICE \$2.10




FREE

RENTAL OF A SPREADER

with purchase of every bag of



LAWN FOOD
20-10-5

\$4.75

COVER 5,000 SQ. FT.

HAZARD AVE.

(at Middle Road)

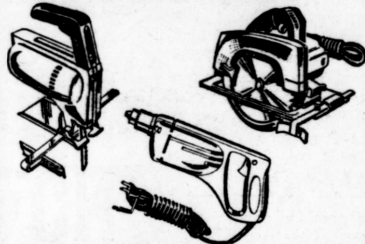
Opp. Smyth's Dairy Bar

RI 9-6535

CHECK THE LIST BELOW FOR EASY TO RENT EQUIPMENT AND TOOLS.

These Are Just A Few Of The Many Items Our New Taylor Rental Center Can Make Available.

POWER TOOLS



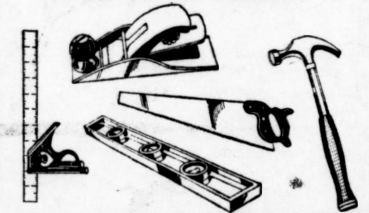
YARD and GARDEN TOOLS



PAINT and WALLPAPER TOOLS



CARPENTER TOOLS



MAINTENANCE EQUIPMENT



PLUS...

CEMENT TOOLS
AUTOMOTIVE TOOLS
PLUMBING TOOLS
SANDERS
MOVING EQUIPMENT
MISCELLANEOUS TOOLS

Suffield Chatter

By Myrtle Hierl
NO 8-7839

Mr. and Mrs. Edward Schmitt of Norwalk, announce the birth of a son, Edward Schmitt Jr., on Mar. 27. They also have a daughter, Lauren, one year old.

Mrs. Schmitt is the former Patrice Barry. She taught Social Studies and Problems of Democracy at Suffield High prior to her marriage.

Maternal grandparents are Mr. and Mrs. John Barry of Mapleton Ave.

Mr. and Mrs. John Whitfield of Halladay Ave. were recent guests at the Ocean Reef Club, North Key Largo, Fla.

Herman A. Michelson of West Suffield has been promoted to division counsel at Hamilton



Standard. He has been with Hamilton since 1952 and became assistant counsel in 1957.

My husband and I, plus the two youngest children, visited my parents, Mr. and Mrs. James P. Black of Searsport, Me., over the Easter weekend.

We just grabbed a change of

clothes, our pajamas and toothbrushes, and started out in heavy rain. By the time we reached the Maine Turnpike, it had turned to sleet. As we arrived in Searsport, the snow was deep on the road. When we left Easter Sunday for home, it was still snowing. We were so surprised to leave the snow in Maine and find Suffield had been spared altogether.

The Suffield Auxiliary, Children's Services of Connecticut, will have a spring sale on May 2 at the Hatheway Barn. Mrs. S. Robert Powell is chairman.

Articles will be accepted at the Barn Apr. 20-24 from 9:30 a. m. to 12 noon. If anyone wishes to deliver articles before Apr. 20, they are asked to call either Mrs. John Coonan or Mrs. Gerald Finn.

Mrs. Frank C. Trotter may be called for donations to be collected.

Atty. Douglas P. Morway, of Mapleton Ave., has been named assistant prosecutor of the 13th Circuit Court. A graduate of the University of Connecticut and of its law school, he maintains law offices in Enfield.

Mr. Morway is a member of the American, Connecticut Court and Hartford County Bar Associations. He is married to the former Frances Hierl of Suffield.

Gordan E. Flood, master of Apollo Masonic Lodge, attended a two-day State Convention of the Masons on Apr. 1 and 2 at Hotel Statler in Hartford. Mr. Flood is well known here as a rural letter carrier for Suffield Post Office.

I need the help of you readers. If you have any particulars of events relating births, unusual parties, trips, special anniversary celebrations and the like, mail or telephone them to me. Most welcome of all are human-interest anecdotes — little happenings that are worth repeating.

SELL Hood ICE CREAM

FROM A REVOLUTIONARY NEW
MOBILE ICE CREAM TRUCK



- Be your Own Boss!
- No Franchise Fee
- No Royalty
- Small Down Payment — 5-Year Financing
- Top Quality Hood Products
- Your Own Exclusive Territory

ON DISPLAY 12 NOON TO 7 P.M. INCLUDING SUNDAY AT

H. P. Hood & Sons

ROUTE 5A

(TAKE WINDSOR LOCKS EXIT OFF ROUTE 91)

SUFFIELD, CONN.

CALL OR WRITE FOR FREE BROCHURE

MANLEY/COLONIAL SPRINGFIELD LY 4-4755