

Valuable
Coupons

see
pages
8, 9, 10,
14 & 16

THE PRESS

BAZAAR

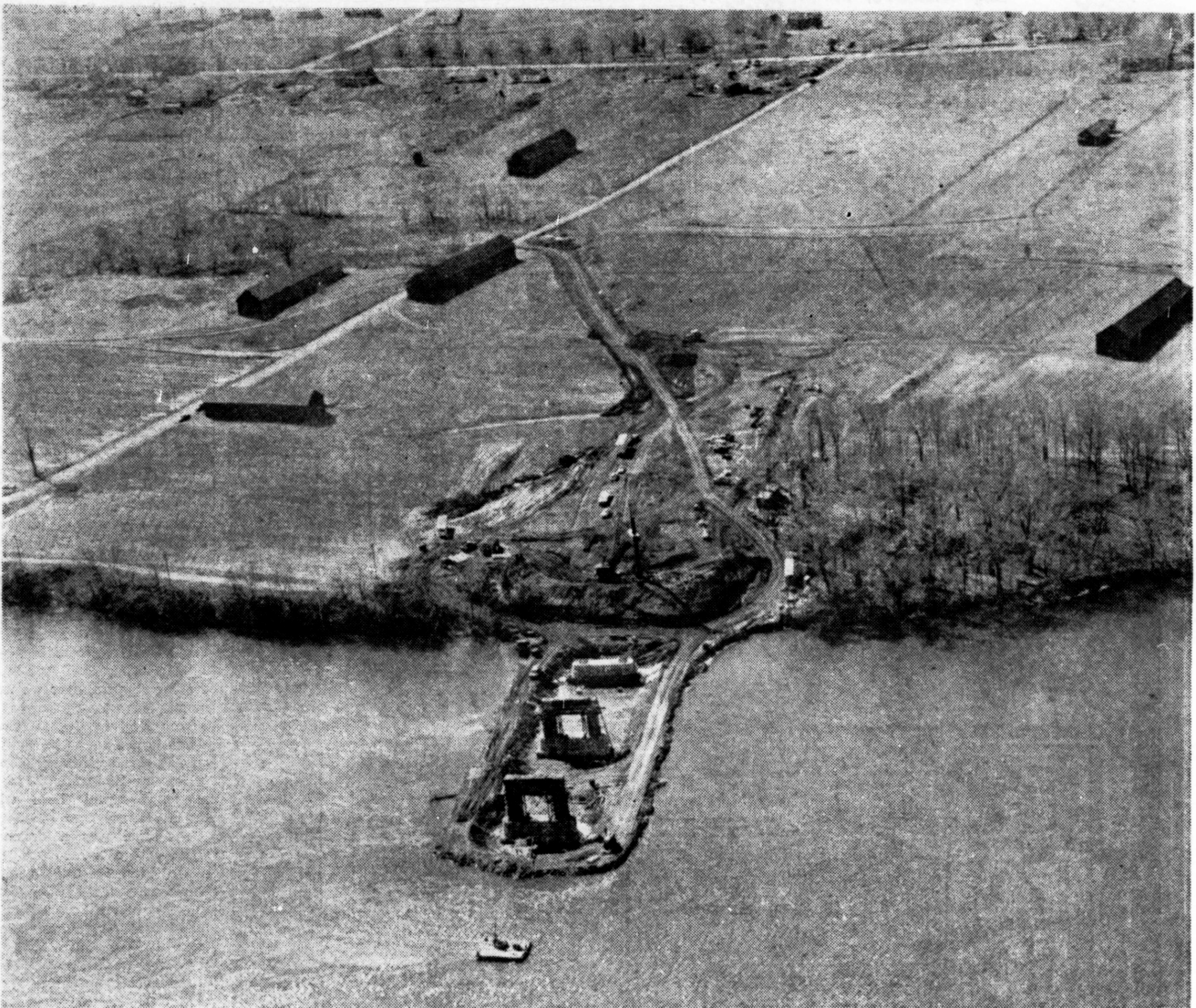
A Supplement To
THE
THOMPSONVILLE
PRESS

VOL. 2 NO. 44

Published By THE THOMPSONVILLE PRESS, 71 Church St., THOMPSONVILLE, CONN.

WEDNESDAY, MARCH 31, 1965

Reaching 14,200 Northern Connecticut Homes



Eastward, Ho!

Or How To Blast Your Way Across The Connecticut River

By George Chappell

The Connecticut River, which begins its 407-mile trip to the Atlantic Ocean at Third Connecticut Lake, N.H., is in most places a relatively shallow waterway. This factor, plus an anticipated lower-than-average spring rising, spells good news to the contractors of the \$5,000,000 Enfield-Suffield Bridge.

In the above aerial view of the Suffield side of the site, taken recently for The Bazaar by Hazardville photographer Al Heald, are three of the bridge's eight piers. The small barge in front of the piers was at the time blasting for

the fourth and fifth piers.

"Frankly," The Bazaar was told by John Kearns, one of the bosses at the site for Coleman Brothers Construction Co. of Boston, "we thought we would be under water by this time down around the second and third piers.

Charts collected by the State Highway Dept. concerning river currents over the last 20 years have shown that the spring thaw and rainfall has at times driven the height up from its average of 16 feet at mid-stream to more than 25. Some rising is still anticipated, but work on the fourth piers is expected to be

completed by that time anyway.

The route of approach from the Suffield side can be clearly seen on the photograph. The makeshift road which the construction crews have fashioned to reach the river's edge runs off Canal Rd., which in turn runs off East St., which is expected to be the main artery to the bridge.

On the Thompsonville side, the bridge approach will intersect Pearl St. near the library.

When four piers have been completed, the construction crews will remove the tons of earth being used to dam up the working area, which

now reaches almost halfway across the river. The crews then will move to the Thompsonville side of the river and begin building dams westward.

The difficult task of blasting for the pier locations rests in the hands of the McAlinden Construction Co. of Hopewell, N. J. Known throughout the North American continent for their blasting work, McAlinden uses a barge-mounted drill to pierce the river bed and place the charges.

The dynamiters' task is to provide each pier with an equal and solid foundation in the shale which covers most of the bottom. The job is es-

pecially tricky because the Enfield Dam is nearby.

Most of the blasting for the piers on the Thompsonville side of the bridge will not be done until warmer weather sets in. Much of the blasting will be on dry land and will require a great deal of earth-moving beforehand.

Workers in the present 15-man crew report that now and then people stop by to watch the progress — but the big crowds of sidewalk (or shoreline) superintendents aren't expected until August or September, when the first of the prefabricated steel sections arrive on the scene — that is, if a steel strike doesn't interfere.

9 x 12

BRAIDS

59⁹⁵
ALL WOOL

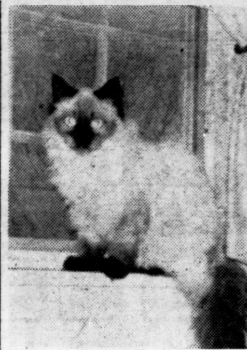
and up.
Large Selection of
Colors & Sizes

**THOMPSONVILLE
RUG CO.**
492 Enfield St.
Route 5
Tel. RI 5-2258

Suffield Chatter

By Ruth Harmon Barclay
NO 8-7088

"Fuigi"—Our Himalayan Cat:
As long as Sheba, our other cat (a huge, red Persian with amber eyes) does not read The Bazaar, I will admit that Fuigi is the most beautiful and the most satisfactory cat I have ever had, and that includes many kinds from the Maine coon cats and rabbit cats (who have long hind legs and only a



FUIGI

ball of fluff for a tail and hop like a rabbit) to just a plain, loveable stray yellow cat with

"Let Us Plan Your Vacation"

- Hotels
- Tours
- Cruises
- HONEYMOON SPECIALS—
TO
BERMUDA & CARIBBEAN

The Connecticut Travel Agency

98 N. Main St., T'ville—RI 5-1234

double paws who dropped in one cold winter's night but like the "man who came to dinner" stayed five years! Fuigi has an affectionate, playful disposition and indestructible gastronomical equipment. She eats everything, although the woman who bred her and sold her to me said "never give her milk or tuna fish or liver." But I decided this was just too much bother, and experimented a little at a time with the forbidden fruits and to my delight and relief she never had a snitch of trouble! A Himalayan is a cross between a Siamese and a Persian. It does not have the yowl of the Siamese—just a normal little meow like a good cat should! They are rare and very popular at cat shows, but most of all they are the most decorative and delightful house pets.

Wedding Bells: Most people I know arrive at weddings with some degree of dignity—and I have never heard of anyone arriving at any wedding by way of scaling a stone wall! Such was the case of the Barclays, who inadvertently took a wrong turn and got lost en route to Sudbury, Mass., where Doris Austin of Concord, Mass., and Tony Hull of Suffield were being married. At about two minutes before 8 (the hour of the wedding), by sheer luck, Hughie and I spotted a darling church, aglow with candlelight, up on a hill, surrounded by cars, so we slammed on the brakes (praying it was the right church), pulled the car to the side of the road, which was behind the church, piled out and started across a field surrounded by a stone wall. In the pitch black darkness, we could not see any walk or driveway to help us out, so my chivalrous husband grabbed me by the hand and said, "Come on—we'll have to climb the wall!" In spite of my protests that he was "our of your mind" and that I would never make it with a tight skirt and high-heeled evening slippers, over we went, racing and gasping across the bumpy field to the church—which turned out to be the right one. The Martha-Mary Chapel (given by Henry Ford) is the most beautiful little white church I have ever seen.

The bride was a dream in white with a tremendous full-skirted train, the bridesmaids in long lipstick-red evening dresses, the ushers, resplendent in tails, were all familiar faces from Suffield—Chris Hull, Bill Swanson, Boots Wardinski, Johnny Tinker—the service was lovely, the wording most meaningful, the candlelight casting an unforgettable glow over everything! The reception was most gala at Longfellow's Wayside Inn next door, complete with champagne and a beautifully served buffet. Quite a Suffield delegation drove up for the occasion—Dottie and Herbie Russell, Alice and Carola Ford, Martha and Malcolm Tinker (now of North Granby), Eleanor and Helen Swanson, Mrs. Sylvia Bigelow, Tony's grandmother, and his great aunt, Mrs. Suzanne Bigelow from New York City, and, of course, Gladie Hull, his attractive mother (who looked lovely in her long, soft beige evening gown), and Bob Hull, Tony's father. The high spot of the entire evening for me (after hurtling over that stone wall!) was a dance with the handsome groom himself. Doris and Tony are now living in their own little house in Littleton, Mass., while Doris completes her senior year at Wel-

WG—Gerald J. Cleary, Haz.

FOUNDATION TO ROOF

We Can Do The Job

- Complete Kitchen Countertops
- Dishwashers & Disposals
- Hatchways
- Carports
- Roofs & Gutters
- Storm Door & Windows
- Room Remodeling
- Breezeways
- Aluminum Siding

Custom-Built GARAGES

FREE
ESTIMATES

CALL
BIDWELL
NA 3-4484

ONE CONTRACT INCLUDES:

- Concrete Work & Digging
- Carpentry
- Painting
- Electrical
- Roofing

Low Bank Rates

COMPLETE KITCHEN SERVICES

- CABINETS
- COUNTER TOPS
Formica & Textolite
- DISHWASHER
- DISPOSER • APPLIANCES
- KITCHEN SINKS
- INSTALLATION

Call Bidwell For All Your Home Improvement Needs

1,000 FREE S&H Green Stamps

On Installed Jobs If Purchased Before April 15

**HOME IMPROVEMENT DIVISION OF
BIDWELL LUMBER CO., INC.**

266 Main St.
Windsor Locks
NA 3-4484



Grants
KNOWN FOR VALUES

OPEN 10-10

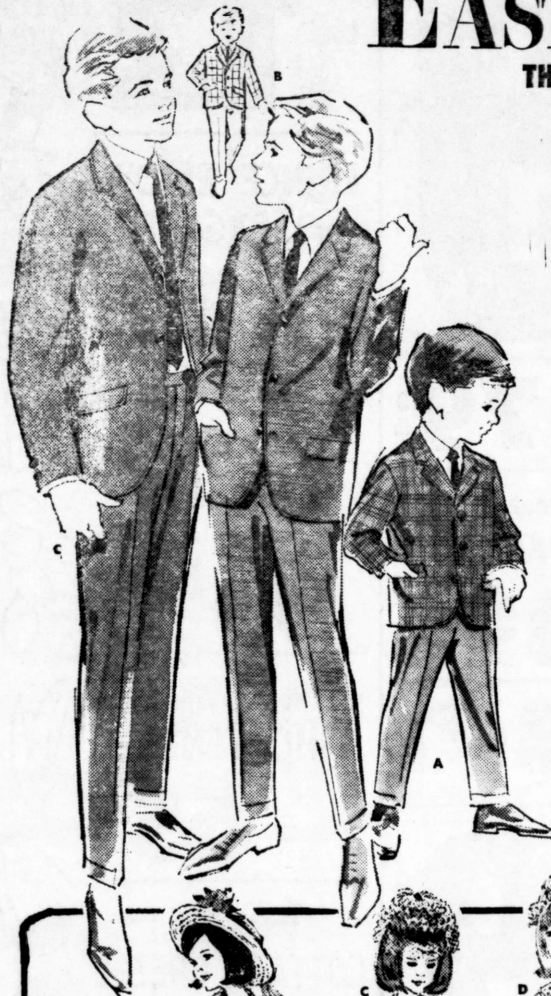
Where but Grants can you outfit youngsters for Spring at low, low prices like these? You get the latest styles, quality fabrics, newest colors and careful craftsmanship.

ELM PLAZA

Elm St. At Rte. 91, T'ville

EASTER FASHION SALE

THURSDAY, FRIDAY, SATURDAY ONLY



Quality counts at Grants... this is why your satisfaction is assured with our money-back guarantee on everything you buy. What's more, Grants makes it easy to save while you outfit your family. "Charge-it" ...no money down, up to 2 YEARS to pay.

LITTLE BOYS' SUITS 3-7

A. Grantogs® muted or light woven plaid jacket with solid slacks. Jacket is lined, slacks have belt loops and cuffs.

Sale
4⁹⁴
REG.
5.99

JR. BOYS' SUITS 6-12

B. Grants Pennleigh® Prep matching suits with Ivy or Continental slacks: "Two-some": plaid jacket, solid slacks.

6⁹⁴

PREP BOYS' SUITS

C. Proportioned suits with center-vent 2 button jacket, Ivy or Continental slacks in rayon/acetate. Reg., Slim, Husky.

10⁹⁴

WOOL EMBLEM-BLAZERS

D. The snappy classic he wears so often! Prep 14-20; camel, red, blue, black. Jr. 6-16: navy, red, black or camel.

9⁹⁹
Prep sizes
6⁹⁹
Jr. sizes

BOYS' DRESS SLACKS

E. Grants 'Magic Value' Fortrel® polyester/cotton, Arnel® triacetate or rayon/nylon. Ivy or cuffed. Reg., Slim, Husky.

3⁹⁹

Grant's Pennleigh® Varsity Iridescent Slacks, 26-30.....4.99



FASHIONS FOR GIRLS 7-14
'Grown-up' easter ensembles

5⁹⁹

A, B: Solid color nubby-weave coat tops a floral print dress. Pastel striped baby cord coat with matching dress. Others, not shown.

SPRINGTIME DRESSES
Pert 'n Pretty Feminine Styles

6⁹⁹

C, D: Two from new collection, delightfully detailed: pleats, 3" hems, 90" sweeps, organzas, laces, pastels, prints. Many, many more!

LITTLE GIRLS EASTER OUTFITS
Young ensembles, fluffy Dresses

SEVEN-PIECE ENSEMBLE

E. Includes hat, bag, bracelet, hanky, gloves, linen-look rayon jacket, pleated skirt. 4-6X.

5⁹⁹

DRESS AND DUSTER SET

F, G. Sailor coat; blue/white dress. Or A-line white dress, blue coat. 3-6X.

3⁹⁹

Trimmed hat, bag set... 2.99

TWO PIECE SETS

H. Shown, one of our many Spring-fresh styles: A-lines, jumpers, many more! 4-6X.

5⁹⁹

Other lovely styles... 3.99

Charming Easter Hats in many styles for Big and Little Girls.....1.99

"CHARGE-IT"
NO MONEY DOWN...30 DAYS
OR MONTHS TO PAY

W. T. GRANT CO.
Your Friendly Family Store

ELM SHOPPING PLAZA
Elm St., Thompsonville



• DOWN COME PRICES • STOCK UP AND SAVE •
BIG BUNNY'S SPRING FOOD SALE

T-BONE
 PORTERHOUSE
 CLUB SIRLOIN
 N. Y. SIRLOIN
STEAK SALE

69
c lb

FRESH BREAD
 Loaf **12**^c

PRINCE ELBOW
 or SPAGHETTI
 3 lb pkg. **39**^c
SAVE 36c

TENDERLOIN STEAK **\$1.49**^{c lb} CUBE STEAK **79**^{c lb}

FRANKFURTS
 2 lb Bag
79^c

Fresh Fillet
 HADDOCK
39^{c lb}

Sweet Taste
 BACON
39^{c lb}

Betty Crocker
 CAKE MIX
WHITE, DEVIL, YELLOW, LEMON
4 for \$1

Hamburg Freshly Ground — All Beef **3 lbs \$1**

Red & White
 SHORTENING
 3 lb can **65**^c

Maxwell House
COFFEE lb can **69**^c
Limit 2 To A Family After \$5 Purchase

Deary Bros.
 COTTAGE CHEESE
 half lb **10**^c

RED & WHITE CUT WAX OR GREEN
BEANS
 WHOLE BEETS
 SLICED CARROTS
 ROSEDALE PEAS
 LIBBY'S CREAM CORN
 HUNT'S TOMATOES

7 tall cans for **\$1**

Potatoes
 10 lb Bag
55^c

Gerber or Beechnut
 Strained
BABY FOOD
 10 for **89**^c

Banquet Frozen
TURKEY or BEEF SLICES 5 oz pkg. **19**^c

ICE CREAM SALE
 HALF GALLON **49**^c

All Prices Effective Wed. thru Tues. following week

BIG BUNNY
 SUPER DISCOUNT MARKET

In The Stafford Shoppers Plaza
 OPEN WED., THURS., FRI. & SAT. 'TIL 9 P.M.
 WE RESERVE RIGHT TO LIMIT QUANTITY

ROUTE 190, WEST STAFFORD

DON'T JUST
SPEND YOUR MONEY

INVEST IT

DON'T
BUY PRICE

BUY QUALITY

COLONIAL-MODERN-PROVINCIAL

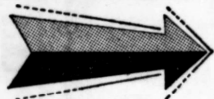
- ★ BERKLINE
- ★ BASSETT
- ★ TELL CITY
- ★ DIXIE
- ★ CUSTOM CRAFT
- ★ TEMPLE STUART
- ★ BLUE BELL
- ★ HARTSHORN

All Groups Are Name Brand
Better Grade Of Material
Hundreds Of Colors & Patterns To Choose From

- ★ VERMONT OF WINOOSKI
- ★ JOHNSON CARPER
- ★ DRAKE SMITH
- ★ BRODY
- ★ FASHION ART

**GROUP
-A-**

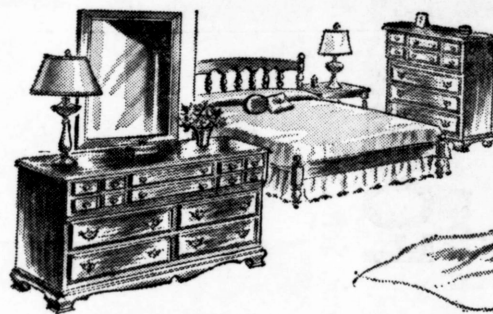
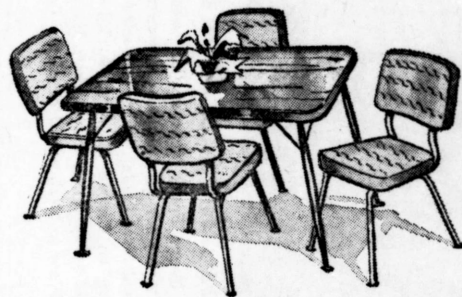
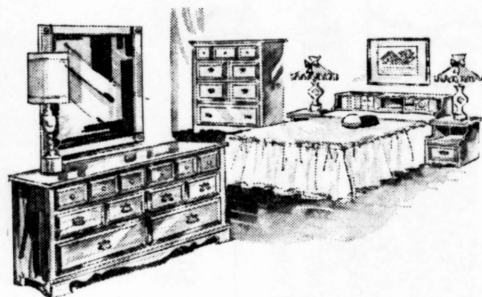
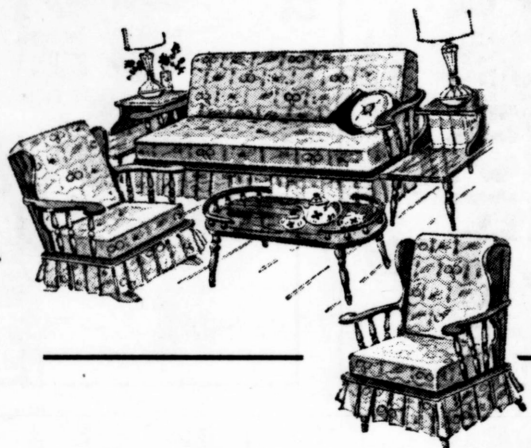
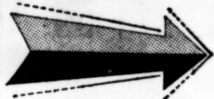
\$299



PLUS groups
in between . . . all
price ranges

**GROUP
-G-**

\$999



LaRussa's FURNITURE & APPLIANCE

**136 MAIN STREET
WINDSOR LOCKS, NA 3-3373**

**12 PEARL STREET
THOMPSONVILLE, RI 5-5595**

Grants
KNOWN FOR VALUES

PRE-SEASON GARDEN SHOP SPECIALS

Green Ribbon
LAWN FOOD

Grows A Thick, Soft Lawn

\$ 10-6-4 **87**

50 lb Bag

Green Ribbon All Purpose
PLANT FOOD

\$ 5-10-5 **57**

50 lb Bag

Lawn & Garden Soil Sweetener
LIMESTONE

50 lb Bag **47¢**

*Charge-It!...No money down...up to 2 years to pay

W.T. GRANT CO.

ELM PLAZA - 49 ELM STREET, THOMPSONVILLE



Mayor Meets A Meat Man

Enfield's Mayor Frank Mancuso (left) was on hand last Wednesday for ribbon-cutting ceremonies at the new Enfield Meat Center, which is located alongside Alan Drug on Enfield St. Artie Artioli (right) of Springfield is operating the market; his partner is Carmen Fiore (center), president of the Connecticut Macaroni Co.

★ **Suffield Chatter**

(Continued from Page 2)

lesley, and Tony is working in radio astronomy at the Haystack facility of Lincoln Laboratory, until he goes back to the University of Pennsylvania.

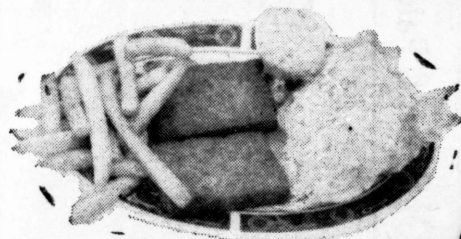
Had a wonderful time at the luncheon-bridge and fashion show over in Somers the other day as a guest of Betty Stevenson. Priscilla Wells did her usual fine job as commentator—the clothes from the Country Casual Shop in Milt Hanos' new plaza were smart as they could be—it was fun to see columnist Evelyn Phillips in person. For some unknown reason I pictured her as the gray-haired, motherly type with a nice imaginative touch for writing, and it was quite a surprise to see her modeling, complete with her adorable French poodle! I was quite relieved to see both Mary Brennan and Alice Suboter there, playing hokey also from real estate!

The main money-raising project of the Children's Services will be a dessert, bridge and hat show Wednesday, Apr. 7, at the Congregational Church at 12:30. Tickets will be \$1.25, and reservations are requested

Grants SKILLET Restaurant
Elm Plaza At Route 91
Thompsonville

OPEN
9 - 10
DAILY

—FRIDAY SPECIAL—



All The **FISH** You Can Eat

Fried Haddock
Tartar Sauce Roll & Butter French Fries Cole Slaw

89¢

OPEN
SUNDAYS
9 'til 9

—DAILY SPECIAL—



Bucket Of
CHICKEN or FISH

10 pieces of Chicken

One & One Half lbs of Fish

French Fries, Cole Slaw, Tartar Sauce, Roll & Butter

2⁶⁹

CALL RI 5-3314 FOR TAKE OUT ORDERS

by Apr. 5; they may be obtained by calling Vicki Allen or Betsy Brome. There will be door prizes. Marie Boyd, Pat Stewart and Betsy Brome are the co-chairmen, with Christine Ahrens heading up publicity. Put this important date on your engagement pads, girls, right now!

Friday, Apr. 2, is Blood Bank day here in Suffield, at the Sacred Heart Church from 12:45 to 5:30 p.m. No appointment is necessary — just come — your blood is really needed, and Suffield has been falling behind with its response. Last time out of only 108 donors, 45 came from the St. Alphonsus College! Need I say more?

I hope you all enjoyed the review that was given Delphina Clark's new book, "Phineas Lyman, Connecticut General," in The Hartford Courant on Mar. 21.

Echoes from the Retired Untired Men's Club: Russ Secrest, well-tanned from his Florida vacation, was given a rousing welcome as he rapped the gavel for order. He voiced appreciation to chairman Hollis Etchell, for his work on the rules book. Recently three members of this distinguished group (Squires Bosworth, Tinti and Barclay) were invited to do some "acting" for the Bay State Film Co. in Agawam. From the comments that I just happened to hear about this occasion, I judged they had a fine time, as the scene was set at Betty's Town House in Agawam, complete with a super buffet, of which our acting heroes were urged to partake—what a tough life these fraternity brothers lead! Leon Tinti has other hidden talents, it seems, as he gave the boys a real treat the other day by singing folk songs, as well as opera, and was accompanied by another talented Beau Brummel, Lee Parsons, at the piano! Amy Fuller writes that they are having a wonderful time at Boca Grande, Fla., golfing, beaching, etc. . . . Molly and Dick Rachals write from Stockholm, Sweden, that they are having a fascinating trip Spen and Skeeter Montgomery, just back from Stratton, Vt., where they enjoyed some skiing with the younger generation. Mark Montgomery and Paul Fox Jr., on vacation from Suffield Academy, as well as Mary Fox, who is at MacDuffie. Young Spence (aged five) was not for being left behind, so he also joined the northbound group. Fortunately, there are wonderful nursery arrangements for the youngest ones! Skeeter reports that she ran into Flo and Flip Fleming, while there. They are now living in Cleveland, but were formerly popular residents of Suffield Congratulations to Airman 3-c William Kuras, son of William Kuras of 1559 N. Grand St., West Suffield, who has graduated from the technical training course for the U. S. Air Force Mechanics at Shepherd AFB, Tex.

Teens and Twenties: Sally Borg LaPierre is now living about 35 miles north of Havre, Mont. She is teaching in a two-room schoolhouse (grades 4.8), as well as teaching ballet. Her husband, Lt. Arnaud R. LaPierre Jr., is personnel director of the 778 Radar Squadron at the Air Force Base at Havre, Mont. . . . Bob Borg is attending Aurora College, where he is on the varsity wrestling team, and is also continuing his interest in Scouts as a Scoutmaster.

The Suspense is over for the following: Rob Johnson has a

choice as he was accepted at Georgia Tech, Syracuse, and Vanderbilt! . . . Bobby Suzenski has received a \$1,000 scholarship at Clarkson Institute for mechanical engineering!

He was also accepted at Worcester Tech and Georgia Tech. . . . Janie Gardner has been accepted at Clemson College as well as Kansas State . . . Billy Turek and Donald Pratt have been accepted at Central Connecticut College; Billy Leahy at the University of Conn.; Karen Jorgensen, editor of the senior yearbook at the Hartford Art School.

One final mention of one of our husky teenagers—Chris Hull—is on the varsity wrestling team at Hinckley School in Maine. He has won nine matches out

of 10! Miss Jane Pitkin Martyn of West Suffield, a senior at Mount Holyoke College, has been elected to membership in Phi Beta Kappa, the national academic honor society. A classics major, she is the daughter of Mr. and Mrs. Lyndon S. Martyn of 51 South Grand St., and a graduate of Suffield High School.

BUSINESS CARDS

AS LOW AS \$5.50 per Thousand

CALL THE PRESS RI 5-3348

Vacuum Cleaners

1964 Models — NEVER USED

FULL PRICE \$18⁰⁰

Terms \$1.00 per week

CALL RI 5-3742

4% INTEREST

from DAY OF DEPOSIT to DAY OF WITHDRAWAL

RIGHT OFF THE BAT!

EFFECTIVE APRIL 1, 1965
PAYABLE OCTOBER 1, 1965

Score a home run every time you make a deposit at The Suffield Savings Bank . . . because now your savings earn 4% a year, compounded semiannually, starting on the day of deposit straight through to day of withdrawal (as long as you maintain a minimum balance of \$10).

If your savings program has never gotten to first base — start saving here, where every day counts!

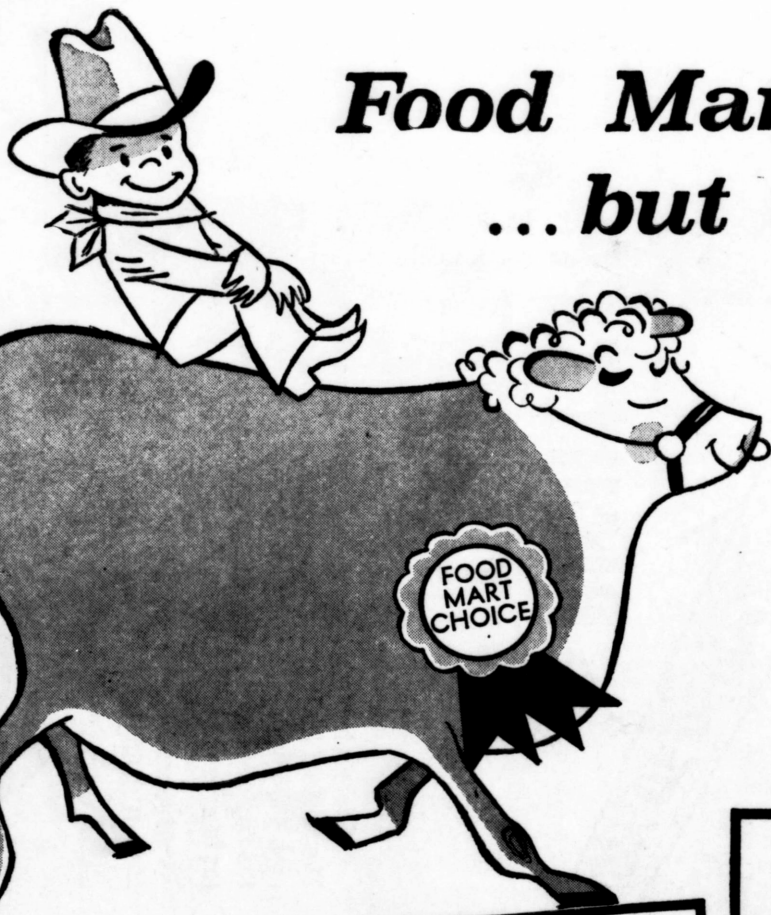
The Suffield Savings Bank

MEMBER FEDERAL DEPOSIT INSURANCE CORPORATION

Main Office: Suffield, Conn., Mon., Tues., Wed., Fri. 9 am - 3 pm, Thurs. 9 am - 6 pm;
Sctico Office: Mon., Tues., Wed., Fri. 9 am - 3 pm, Thurs. 9 am - 6 pm Walk-up Windows 3 - 4:30 pm



**Double Stamps
Every Wed.**



**Food Mart is choosy
... but only for you!**

Yes—we're mighty choosy about the meats we sell at Food Marts. They are all carefully selected by our buyers — at the packing plants to become "Food Marts Famous Choice Meats" . . . those extra tender, juicy and delicious meats that can't be bought anywhere else. Food Marts is especially famous for wonderful meats . . . because Food Marts is choosy . . . but only for you!

FOOD MART CHOICE
Roast Sale

Here are Food Mart Roasts at their very best! Serve one this weekend but, be prepared to meet the demands for seconds!

Ask Kathy



Dear Kathy:

We've given our daughter everything but she has never been grateful. The more we give, the more she wants.

Since she was tiny she had the best and biggest of everything. We never even left her with a sitter. Not once was she even

EASTERN SHORE
**swordfish
steaks**
BONELESS
49c
LB.

ARMOUR STAR
**pork
sausage**

SMALL
LINKS **69c**
LB.

ARMOUR STAR

food mart choice
**top
round**
LEAN, TENDER
FLAVORFUL
88c

food mart choice

**bottom
round**
POT ROAST
LEAN, TENDER
FLAVORFUL
78c
lb.

food mart choice
**top
sirloin**
LEAN, TENDER
OVEN ROAST
99c

slightly unhappy if there was a way for us to help.

Now that she's a teen, we find ourselves wondering what went wrong. Nothing we say carries any weight. Advice from us makes her stubborn and nine out of ten times she'll take the opposite course. We can't handle her now. I can understand why deprived children go wrong but why are parents who have really tried, exposed to so much heartbreak?

J. D.

Dear J. D.:

Giving children everything isn't doing them a favor. A good parent aims at developing his baby into a good adult.

An adult lives in a competitive world. It's full of give and take. Your daughter has been exposed only to the take part. You've supplied the toys but not the tools she needs for life.

Compete and earn are foreign words to her. If you talked about sacrifice, she'd wonder why! She's walked all over the only adults she's dealt with and isn't prepared to take on a world full of demands on her.

What you've led her to expect isn't what she has to be. Can't you see why she might start looking for a new authority?

Start thinking of that little island called home as a small bit of the outside world. Give each of the people in it child and adult, a proper share of respect and attention. Perhaps it isn't too late.

Adopting a new attitude will be difficult after all these years. You may need coaching from an expert to change the role you've played for so long. Advice from a school guidance counsellor, doctor, or religious advisor you know well could be a tremendous help.

KATHY.

Send All Letters to "Ask Kathy" P.O. Box 179—Hanover St. Station, Boston, Mass., Zip Code 02113.

bologna or liverwurst

BY THE PIECE. **39c** LB.

STEAK-ROAST 98c LB.

CENTER CUT 98c LB.

WE RESERVE THE RIGHT TO LIMIT QUANTITIES

layer cake mixes

BETTY CROCKER OR PILLSBURY

25c

rich's coffee rich

AVAILABLE IN THE FROZEN FOOD CASES.

13c

orange juice

DARTMOUTH FROZEN 6 OZ.

6 FOR 1.

marshmallow fluff 3 7 1/2 OZ. JARS 50c

gourmet corn rye bread

ONE POUND **19c**

gourmet party rolls

PKG. OF 12 **19c**

gourmet big buy white bread

1 1/2 LB. LOAF **29c**

Food Mart's have the best McIntosh Apples in town! These apples have been put to sleep with all their harvest freshness. After a long, restful sleep in a specially controlled atmosphere they are awakened in all their glory, crispness and wonderful taste!

U. S. No. 1 NATIVE CRISP-AIRE

macintosh apples

3 LBS. 44c

california celery

The Largest bunch ever!

28c

Taylor Smith & Taylor
DINNERWARE

THIS WEEK: SALAD PLATE

each piece only

9c With each \$5. purchase

agawam

fairview

holyoke

springfield

enfield at route 91

20c OFF

ON TWO 46 OZ. CANS FOOD CLUB

GRAPEFRUIT JUICE

AND THIS COUPON ONLY AT ALL FOOD MART STORES

VALID THRU SAT., APRIL 3
LIMIT ONE COUPON PER FAMILY

25c OFF

ON FOUR 12 OZ. CANS

GREEN GIANT

NIBLET CORN

AND THIS COUPON ONLY AT ALL FOOD MART STORES

VALID THRU SAT., APRIL 3
LIMIT ONE COUPON PER FAMILY

50 extra S&H green stamps

WITH PURCHASE OF ANY PAIR

D'AZUR NYLONS

AND THIS COUPON

COUPON VALID THRU SAT., APRIL 3

100 extra S&H green stamps

WITH PURCHASE OF \$5. OR MORE AND THIS COUPON

COUPON VALID THRU SAT., APRIL 3

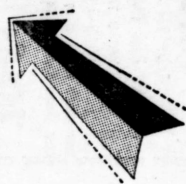
AT FOOD MART STORES
LIMIT ONE COUPON PER FAMILY

SPRING BARGAINS

...TO SING ABOUT!

At Turnpike Discount Cleaners
Windsor Locks

CLIP 'N' SAVE!
THIS COUPON WORTH
WITH
DRY
CLEANING
OF \$1.00
OR MORE
25¢
OFFER EXPIRES APR. 7, '65



TURNPIKE DISCOUNT CLEANERS

186 Turnpike Road, Windsor Locks
(Next to Al-Mar Beauty Salon) NA 3-1597

ATLANTIC HEATING OILS

This Burner Service Plan Is

COMPLETE

CHECK THIS COVERAGE with any other

- Fuel Tank • Circulator Assembly • Combustion Chamber • Blower Fan Motor and Assembly • Draft Regulator • Transformer • Oil Burner Motor • Stack Relay • Oil Pump • Warm Air Limit Control • Hot Water Limit Control • Aquastats • Thermostats • Oil Burner Fan • Nozzle • Miscellaneous Small Burner Parts

PLUS • Mid-Winter Check-up
• Summer Check-up
• 24 Hour Emergency Service

ALL THIS FOR **\$2** PER MONTH

Yours Only At

KELLER OIL CO.
CALL RI 5-3334 TODAY

You Get What You Pay For!

Bazaar Classified

30c A Line
Minimum Charge \$1.20
Babysitting Ads Free
Deadline Friday

1964 MODEL SINGER Zig-Zag sewing machine, makes designs, buttonholes, etc. Needs no attachments. Looks like new. Used very little. Will sell for 9 payments of \$8.54. No 8-2329. 4t 4-7

WILLIAM J. DEMERS
INCOME TAX EXPERT
• Personal Returns •
Springfield Rd., Somers, Ct.
RI 9-7275

Beautiful Building Sites — Unsurpassed view from these mountain side lots. All over an acre. Residential zoning. Ten minutes from Suffield center. These choice lots are a gilt-edged investment. Only a few left! Call Ruth Barclay, Suffield NO 8-7088. tf 2-17

TRADING POST — 51 Church St., Thompsonville. Open Saturdays, 10 to 5; Thursdays and Fridays, 1 to 3:30. tf 3-17

NEW ENGLAND HOMESTEAD MONTHLY FARM MAGAZINE — 1 yr. \$1; 3 yrs. \$2.50; 5 yrs. \$3.50. Send check or MO to Mrs. H. J. Henry Sr., 25 South St., T'ville, Ct. Print name & address clearly. tf 1-27

WANTED

— WILL BUY —
Town & business records, deeds, diaries of Somers & Area Towns
DAVID GRACI
Parker Rd., Somers
(Member of Somers Historical Society)
Call RI 9-3686

Registered Nurses — Full time days or part time evenings. Good wages, pleasant working conditions. Interesting & challenging work. Located in Windsor Locks. NA 3-7139 between 11 a. m. and 5 p. m. tf 3-10

1955 Volkswagen, radio and heater, very good condition. \$500. RI 5-2376. tf 3-24

Pony buggy wanted for children. RI 9-6777. It 3-31

Get out of these 4 walls! Meet people, enjoy life, make \$\$\$ in spare time near home, selling AVON Cosmetics. Big comms., no experience req. NOW! NO 8-7576. It 3-31

Virginia W. Schoenleber
Sunshine Art Studio
35 Pleasant Street
Warehouse Point, Conn.

— will conduct —
Antique this 'n' that TAG SALE
Saturday, April 3
10 a.m. to 4:30 p.m.

ANTIQUE BOOTHS

- Mabel Allen
- Dorothy Whittier
- Jean Dewey
- E. Windsor Garden Club & Youth Center

Reliable man wanted for hardware department. Experienced preferred, but not necessary, 42-hour week. Write TD269, c/o The Press, T'ville. It 3-31

I AM LOOKING

for a woman who is interested in earning \$100 a month or more part time. For interview appointment call Mr. Berger at FASHION TWO TWENTY STUDIO, in Agawam, 737-2607. It 3-31

Yankee Trader
FREE Swap Ads
Send to: The Press Bazaar
71 Church St., Thompsonville

Will trade baby's bassinet, curtains, bedspread, lady's coats for S&H Green stamps. RI 5-4904. It 3-24

Have the following for S&H stamps: waffle iron, 1 book; tape recorder, used very little, 3 books; small rocking chair, white, 1 book; Readers' Digest Great Book Atlas, \$17 value, orig. carton, 3 books; adjustable bed frame, 3 books; green Lawson chair, just cleaned, ex. for rec. rm., 4 books. RI 5-1409. It 3-24

Will swap large automatic ironer in excellent condition for 8 books S&H Green Stamps. RI 9-4062. It 3-24

ANGIE'S Poly Clean
*Service Mark of Whirlpool Corporation
CENTER PLAZA
Off Elm St. Exit Route 91
Thompsonville
8 A.M. to 10 P.M. Every Day
OPEN SUNDAYS

SELF-SERVICE
DRY CLEANING
\$1.50

Along With Our Coin Washers & Dry Cleaners

©Whirlpool Corporation, 1962. All rights reserved. *Service Mark of Whirlpool Corporation

Ready for Reupholstery?

IT'S WHAT YOU DON'T SEE THAT MAKES CUSTOM REUPHOLSTERY FROM US SO SUPERIOR

- Furniture is stripped and repadded
- Springs retied with Italian twine
- Frame completely repolished
- Seat platform completely rebuilt
- Highland's steel web construction
- FREE ARM COVERS
- New Indian jute webbing is used
- All loose joints reglued
- Original shape of furniture restored
- Fabric patterns carefully matched back and front

Furniture is picked up and delivered at no extra charge

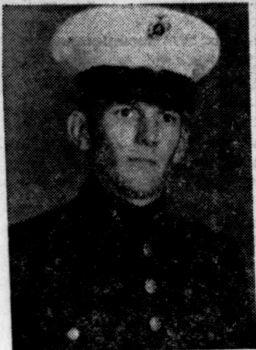
HIGHLAND UPHOLSTERING
Factory & Showroom
420 Dwight St.
Holyoke
EST. 1946

FREE ESTIMATES — BUDGET TERMS
ALL WORK GUARANTEED
SOFA OR 2 CHAIRS \$99

Chosen from special group of lovely traditional, modern, colonial and provincial fabrics in decorative colors.

Also Specialists in Custom-Made Slipcover and Drapes

SHOP AT HOME — CALL RI 9-6005
NOT CONNECTED WITH ANY LOCAL FURNITURE CO. WITH A SIMILAR NAME.



Poggi To Camp

Marine Pvt. David J. Poggi, Jr., son of Mr. and Mrs. David J. Poggi, Sr. of 4 Dicardee Dr., has graduated from recruit training at the Marine Corps Recruit Depot, Parris Island, S.C. Recruit training prepares Marines for further specialized training in a service school or with a unit of the Fleet Marine Force. Pvt. Poggi is at Camp Lejeune, N.C. for further combat infantry training.

Spain has only one television channel.

Ireland has 2,952 physicians.

**INCOME TAX
RETURNS
PREPARED**

Personal & Confidential

John W. O'Leary
90 Stevens St.
Windsor Locks
NA 3-5168

we invite you to

DEPEND ON US!

For day-and-night, routine-and-emergency service, for prompt, automatic degree-day delivery of Atlantic's famous triple-refined heating oil, for heating comfort you can really count on, call

FRANK'S

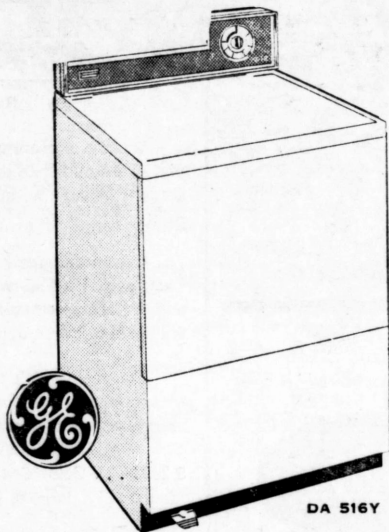
Oil Service

18 CEDAR ST.
HAZARDVILLE
RI 9-4392 or RI 9-8028

**ATLANTIC
HEATING OILS**

**WHO SAYS IT'S EXPENSIVE TO LIVE MODERN ...
Not When You Can Choose From Many G.E.
ELECTRIC DRYERS
AT A LOW, LOW CHARLES A. LUCE PRICE!**

YOU'RE IN FOR A TREAT EVERY WASHDAY—NO MORE RAIN, DUST, COLD WEATHER PROBLEMS — NO MORE HEAVY WASH BASKETS TO LUG OUTSIDE. YOU'LL BE AMAZED AT HOW THESE G.E. DRYERS TUMBLE YOUR CLOTHES TO SWEET-SMELLING SOFTNESS. AND QUICKLY.



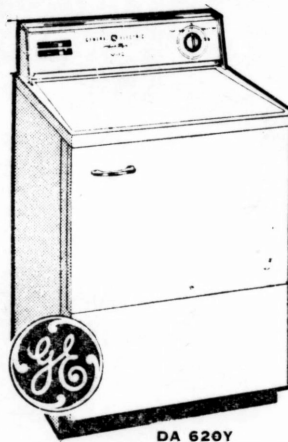
**2 Heat
Low Cost Beauty**

A BEST-BUY AT

\$ 118

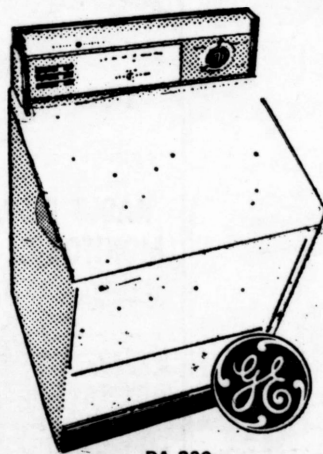
**4 Heat Selection
With Fluff And De-Wrinkle Cycles**

\$ 138



Completely Automatic

Just press a button and this one has an automatic censor control that assures correct heat and time for each load. No guessing. Clothes come out perfect each time. The last word in modern dryers.



\$ 168



Charles Luce

MAIN ST. HAZARDVILLE

RI 9-8036

The New York State Thruway is 559 miles long.

There are 100 covered bridges in Vermont.

Colorado produced 3,112,000 tons of sugar beets in 1963.

Ostriches breed three times a year.

Last year 79,000,000 auto tires were sold in the U.S.

Americans mailed 1,655,000,000 airmail letters last year.

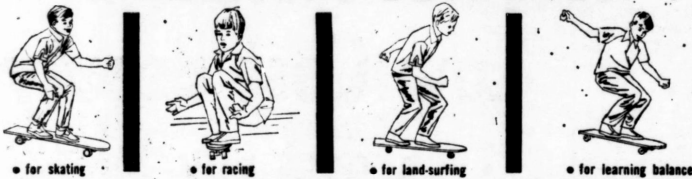
There were 461 tornadoes in the U.S. last year.

Grants **ELM PLAZA** **OPEN 10 TO 10**
 KNOWN FOR VALUES Elm Street, Thompsonville, Conn

SKATE BOARDS
by Roller Derby

for the nation's newest, most exciting sport --

SIDEWALK SURFING!



MODEL #10 ROLLER DERBY SKATE BOARD. Beginners' best friend. 19" long, 4½" wide. Steel ball bearing wheels, rubber-mounted.

Model No. 10

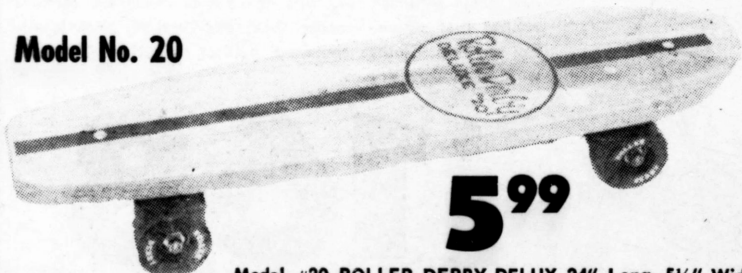


MODEL #15 ROLLER DERBY'S NEW "MUSTANG" SKATE BOARD. New design, new colors, an exciting value. 21" long, 5" wide. ¾" board. Double race ball bearing plastic wheels.

Model No. 15 **2.99**



Model No. 20

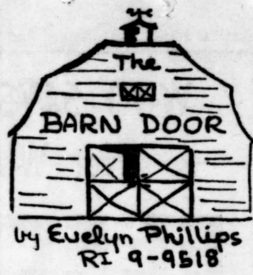


Model #20 ROLLER DERBY DELUX 24" Long, 5½" Wide Has floating action Shock Absorber that makes rough surfaces smooth. Will support Dad with ease. Double race ball-bearing heavy duty plastic wheels.

As Advertised On Television

"Charge-It"...No money down...up to 2 years to pay

W.T. GRANT CO. Your Friendly Family Store



Goodbye March and hello sweet April—"I have never been able to school my eyes against young April's blue surprise," so says Charles O'Donnell.

A charming antique show held at the town hall kept us "oh-ing" and "ah-ing" for many

hours on Saturday. After sloshing through the snow and drizzle, the bright yellow forsythia and kitten-gray pussywillows looked so lovely at the reception table. Pretty Mrs. Reginald Jackson greeted us. Immediately we saw Paul Hamel at his booth with several good paintings to show. One, a delightful primitive of a child in a chair, captured our hearts and sold for \$300. We liked an interesting 17th Century Persian war helmet Paul had tucked in a corner. Mrs. Alvin Brown was admiring one of Hamel's old pieces and as we browsed into Bernice Feuer's display (Bernice is from Wethersfield) we caught sight of Mrs. Norris Wood being photographed look-



By Ed Woodruff

When a performer such as Bob Hope looks out at you in the audience during his monologue, his eyes are actually glued on the cue card — idiot card, if you prefer.

Cue cards have been in general use for some time. They avoid fluffs, keep dialogue from bogging down and are of appreciable value to any but those performers suffering with acute myopia.

You really can't tell if you are getting high quality reception until you compare your set with the beautiful, marvelously performing modern sets at WOODRUFF T. V. SALES & SERVICE, Hazard Avenue. Phone: RI 5-2626 . . . Color Specialists . . . Financing can be arranged . . . Complete line of Motorola.

Now At **LeGEYT** 
 Hazard Ave. (Next to Interstate 91)

Beat The Spring Rush
 On Auto Tune-Ups . . .



Now Is The Season For
FRONT END ALIGNMENTS
 Bring Your Car In Soon

... SEE LeGEYT
 For The Best Service Yet

We Have
RADIO DISPATCHED ROAD SERVICE
MONITOR II **KKB 0549**



LeGEYT 
 Hazard Ave. at Interstate 91
 Thompsonville — RI 5-0658

ing very smart. Mrs. Frank Orton was busy at the food bar and thanked the "Barn Door" for publicity for the Antique Show. Bernice had some interesting early time pieces and clocks as well as lovely old jewelry. We were taken with the hammered enameled brass Chinese bells hanging on a cord, a great conversation piece.

Hazel Hayes of Somers, looking so refreshing in a cranberry-red wool outfit, was actively engaged in conversation with several prospective buyers at her booth. We saw some beautiful old dolls and at Florence Klemenger's arrangement, we learned that she has a priceless old French doll made in 1830. The "Little Red Farmhouse" had opened shop in the Town Hall and Rita and Ted Cowan's collection was so very shiny. Their luster-ware, copper and brass, lovely old bottles, all were sparkling. The Cowans had some good-looking furniture as well. In the Gibson Girl Shop we saw lots of posters from the era of the famed Gibson Girl. Louise Thurrot was browsing in the next booth having a marvelous time, looking at antique glass. We spotted Dorothy Dunlap, too, obviously enjoying the show.

We noticed that the menfolk were much interested in Susan Eagan's display. Reason was the old guns, gun-holders, tin gun-powder containers and primitive tools. The show had everything to excite the imagination to the re-living of by-gone days in New England.

By way of contrast, in the evening, we visited the Eastern States Better Living Center and saw the very latest and newest in the field of American recreation—the Camping and Outdoor Show. Among the crowd we saw Mr. and Mrs. Sherman Wilbur, Mr. and Mrs. Robert Duncan, and Mr. and Mrs. Earl Daniels. As we entered, we heard quite a ruckus on our left. On the stage, a group of young men in American Indian costume were doing a war dance and explaining old Indian customs and lore. The building was jammed with people, out to see the newest of facilities for the camper. We had a most stimulating talk with Gerard Harrison, professor at Springfield College. (The college trains administrators and organization leaders for camping.) It looks like camping will mean big business this year.

Jerry and Shirley Doucette, here from Maine, sent us a-dreaming of long, lively summer days by lake and stream. Just as we were about to leave, we spotted the largest St. Bernard dog we have ever seen. He was huddled in a huge heap—with one eye on the passers-by and the other eye on his bottle of spirits. His name is Henry.

We are willing to wager a crooked hairpin that come summer, the guests dining at the Playhouse Plaza will ask "Where can we buy tickets for the plays advertised on yonder posters?" (How we would delight to see once again "The Four Poster" with the same cast.) When at the Plaza, we always look to find Sherry—such a cute pixie redhead!

By the way, did you happen to see Big Fred on Channel 22? We hear he is a real drawing card at Faber's.

One of the best-looking pairs of western boots in town are being worn by B.C. Mohrbacher. The boots have an Indian design tooled on them with the

mystical Indian thunderbird and lightning flash.

Did you know that Bill Pinney has just returned with the Yale Whiffenpoofs from a two-week stay in Bermuda? Yes, they were performing some of the time. Bill's petite, charming sister Chris was in Beverly Hills, Calif., with college friends, also enjoying lots of sunshine.

For music lovers, nothing can top the old masters! We were privileged to hear Felix Mendelssohn's "Elijah" once again—this time performed by the chancel choirs of the First Church of Christ in Longmeadow. William LaFond, tenor, sang his recitatives with such beauty, the Somers group of listeners was spellbound. Mrs. Wayne Turner in Spring navy, Mrs. Charles White in brilliant red, Mrs. Stuart Benson in white made an attractive red, white and blue picture as they joined the capacity audience for this Lenten concert. The part of Elijah, sung with such sincerity and simplicity by Robert Brown, will be remembered, we think, for his exquisite rendering of the beautiful soft passages.

In an entirely different mood, we had such a gay time at the Chet Delaney's. They are home again from Florida and anxious to get out on the golf links. Alice is still wearing her snakey winter "shoes." We met Gertrude and Abe Andrews from Crystal Lake and promised to visit them come swimming season. The Walter Benks will soon be moving into their new home and the wheel of change is still turning. Our friends, the Harlowes, will be leaving us to go back to live in beautiful Cheshire.

We are thrilled at the news that Christine Mulak will be going to Girls' State at UConn this June. Chris was chosen to be the representative from Somers High School, based on her all-round ability as a fine student and leader in the junior class.

Calling all talented teenagers: Dawn Robinson, member of the Enfield Beagle Fan Club, is looking for young people to take part in a variety show to be held in the Town Hall May 22. The show will be to benefit the John F. Kennedy Memorial Library Fund.

One of our good friends, Dr. Amberson, tells this story about two of his colleagues. Hope you find it humorous, too: Two psychiatrists occupied offices in the same building and met every evening in the elevator on their way home. One was always alert, happy, and impeccably groomed and the other was shabby, depressed, and tired. Finally, the tired doctor said to the other analyst: "Tell me something. We both do the same work. How come you always look so well and contented and I'm always so weary and exhausted after we spend the day listening to all those discouraging problems of our disturbed patients?" "Who listens?" the other psychiatrist said.

What an exciting week in the Space Program! Like everyone lucky enough to be near a TV,



SEE THE
ACADEMY AWARDS SHOW
Presented by
HONDA
and
MANCHESTER HONDA CENTER
634 Center St.
Manchester, Conn.
Monday, April 5
Channel 40—10 P.M.

Wednesday, Mar. 31, 1965—THE PRESS BAZAAR—Page 13
we watched our astronauts flight by rocket and contemplated how much change some of our citizens have seen over the years. Did you know that there used to be a trolley line down Main Street of our village? Ida Holecomb was telling us how the youngsters used to board the trolley to go to school. See you next week, here at the Barn Door!

The Somers Playhouse Plaza



Country Casuals
You're Right...
...It's time for your Easter Outfit.
Join the parade in a new Spring Suit.

The Playhouse Plaza, Main St., Somers RI 9-0014



A Secret Weapon For Golfers...

The Jack Nicklaus Weatherflight by Robert Lewis



The Highlander

AT THE PLAYHOUSE PLAZA, SOMERS, RI 9-6417

CLAUDIA'S BEAUTY SHOP

Under The Management of Claudia (Wheelock) Bell
RI 9-0216



PLAYHOUSE PLAZA Tues., Wed. & Thurs. ONLY
Main St., Somers, Conn.

— SPECIAL —
\$15 Permanent for \$10



Whirlpool

2-SPEED, 3-CYCLE AUTOMATIC WASHER



— New super Wash cycle for heavily soiled clothes

PRICES START AS LOW AS

\$179⁹⁵

• 2-Speeds — 4 Cycles Super Wash, for extra dirty things, Normal, Gentle, Wash 'N Wear

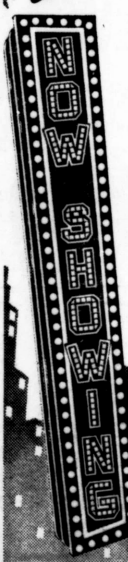
• 3-Water level Controls

• 3-Pushbutton Wash-rinse Water temp. selection

SOMERSVILLE APPLIANCE & ELECTRIC COMPANY

Main Street, Somersville, RI 9-4846

OPEN EVENINGS



Enjoy delicious food while you shop at The Playhouse Plaza in Somers

THE PLAZA RESTAURANT
MAIN ST. SOMERS, CONN.

ELLINGTON

and points west

Melrose • Broad Brook

Warehouse Point

By MRS. EVA BORDUA

Box 190, Rt. 1, Ellington

Phone 875-9838

Monkey Shines

Monkeys are cute—behind bars. Loose and near me, I'm

sure I would scream or run. Not at a mouse nor an ordinary snake, but a monkey, yes. It all goes back years and years.

Some of you can remember the old time hand organs and monkeys that were often seen on city streets. The little old organ grinder would balance the small square box organ on a single stick while he cranked out music. The music was

squealy, vastly imperfect, but to the kids gathered around the organ grinder, it was—well, it was music, melodies, anyway. I don't remember ever seeing an organ grinder who was not a small, grimy man, usually with a grandiose mustache, a soft felt hat, and was inevitably Italian or some dark-skinned "foreigner."

The long-tailed, fidgety little

monkey, dressed in a dirty but colorful suit, was the drawing card. He would sit on the organ, with a long leash attached to him, chipping away, twiddling nervously, taking his hat off to bow to people when his master did. At a word from his master the monkey would jump to the ground, dragging the long leash, and scamper from person to person, holding out a small tin cup in which pennies were usually dropped. I often heard grown-ups say that organ grinders became very rich and bought fine homes. They didn't look headed in that direction but who knows? Perhaps they knew how to get along on very little, and saved.

One day I had a fright from one of these little coin collectors that I'll never forget! It wasn't only the monkey I'll remember but other things involved in the incident. Let me set the scene for you. We lived on a beauti-

ful street lined with tall elm trees that almost met overhead, and in a large red brick duplex house. Such houses in those days had "blinds" on the doors and windows, not screens. The down-turned shutters seemed to keep out insects as well as hot sunshine. On this particular day mother was mopping the long front hall and I was in the parlor. Blinds were all open to "air out." Mother had opened the front door blinds and started mopping. She had the old-fashioned "rag" mop and a large pail of more or less hot soapy water.

She called to me to hurry and close the window blinds as a hand organ man was coming toward our house. I ran to the window and reached out to draw in the blinds—they opened outward—when that monkey jumped up on the window sill within inches of my face! Being two months short of four



SPRING TUNE-UP SPECIAL

COMPLETE TUNE-UP

INCLUDES:

- CLEAN POINTS & PLUGS
- RESET TIMING
- RESET CARBURETOR
- LUBRICATE DISTRIBUTOR ALTERNATOR & CHOKE LINKAGE
- TEST ALL WIRES

6 cylinder

745

PLUS PARTS

8 cylinder

845

PLUS PARTS



★ 500 S & H GREEN STAMPS
With Every Tune-Up



ENFIELD CHRYSLER-PLYMOUTH

917 ENFIELD STREET - AT HIGH STREET - CALL RI 5-0361

LOT OWNERS! FUTURE HOME BUILDERS! NEW FROM MAIN LINE HOMES



3 Bedrooms . . . Bath

ALL BRICK FRONT

Devon

CUSTOM BUILT HOMES COMPLETE! READY TO MOVE IN!

NO MONEY DOWN

25 YEARS TO PAY

\$69.74 A MONTH

NON-LOT OWNERS IF YOU DON'T OWN A LOT, WE HAVE LOTS FOR YOU, OR WE WILL HELP YOU PURCHASE ONE.

STANLEY HUDERSKI
735 Suffield St. Suffield, Conn.

Please send me, without obligation, the 32-page Home Planning Catalog, in full color, and other information about Main Line Custom Built Homes.

Name _____

Address _____

City _____ County _____

State _____ Phone _____

I Own A Lot For A Future Home In

I Would Like A Lot In

Stanley Huderski

735 SUFFIELD STREET

SUFFIELD, CONN.

NO 8-2738

RICHARD DRUG CO.
FREE DELIVERY
GEISSLER'S SHOPPING CENTER
WAREHOUSE POINT, CONN.

RICHARD SCHUMAN, B. S., R. Ph.
DAVID H. SCHUMAN, R. Ph.

PHONE NA 3-3827

Rexall 1 ORIGINAL SALE
THURS. APRIL 1 thru SAT. APRIL 10

2 for the PRICE of 1 PLUS A PENNY!

79c RUBBING ALCOHOL, Rexall, pint.	2 for .80
53c SUPPOSITORIES Glycerin, 12's	2 for .54
69c BLUE ORAL Antiseptic Mouthwash, 8 fl. oz.	2 for .70
39c SACCHARIN 1/4-gr. tablets, 100's	2 for .40
2.69 MINUTEMAN Chewable Vitamins, 100's	2 for 2.70

EXPERT PRESCRIPTION SERVICE
You always get highest quality pharmaceuticals at Rexall!

Rexall ASPIRIN None finer! 100 tablets. Reg. 69c	2 for 70c	Rexall BUFFERED ASPIRIN 100's Reg. 98c	2 for 99c
Rexall MINERAL OIL Pint - Reg. 79c	2 for 80c	Rexall MILK of MAGNESIA 12 fl. oz. Reg. 69c	2 for 70c
Rexall MI-31 ANTISEPTIC MOUTHWASH Pint - Reg. 89c	2 for 90c	Rexall KLENZO ANTISEPTIC MOUTHWASH Pint - Reg. 79c	2 for 80c

Rexall MONACET APC Tablets
100's, Reg. 1.19
2 for 1.20

Rexall PANOVITE VITAMINS. Help prevent deficiencies. 100's. Reg. 2.98	2 for 2.99
Rexall POLYMULSION. Children's Liquid Vitamins. Pint. Reg. 3.89	2 for 3.90
Rexall FUNGI-REX for Athlete's Foot Salve, Oint. or Liquid. Reg. 98c ea.	2 for .99
Rexall DICALCIUM PHOSPHATE With Viosterol. 100's. Reg. 1.39	2 for 1.40
Boxed STATIONERY 4 styles. With envelopes. Reg. 2.00 Box	2 for 2.01
Belmont HOUSEHOLD GLOVES Rubber. Reg. 89c pair	2 Prs. .90
Men's, Ladies' BILLFOLDS Genuine leather. Deluxe features. Reg. 2.00 ea.	2 for 2.01
Rex FILM Nos. 120, 127, 620 Black-and-white. Reg. 55c roll	2 for .56
Lorie BUBBLE BATH Scented. Box of 20 packets. Reg. 65c	2 for .66
Adrienne DUSTING POWDER Also, Lavender. Reg. 1.75 Box	2 for 1.76
Cara Nome HAND LOTION Fragrant. 8 fl. oz. Reg. 98c	2 for .99
Electrex HEAT PAD 3-speed; washable cover. Reg. 5.95	2 for 5.96
Rexall DEODORANTS Ro-Ball or Cool Blue Cream. Reg. 69c each	2 for .70
Rexall SHAMPOOS Choice of 3 types. 8 fl. oz. each. Reg. 98c	2 for .99
Rexall SHAVE CREAMS Lavender or Red-Shave. 11 oz. aerosol. Reg. 98c	2 for .99

Assorted SUNGLASSES, Men's, Ladies', Kids'. Reg. 39c to 2.98
NOW 2 for the price of 1 - PLUS A PENNY

Dominion HAIR DRYER Portable. 8.99	SURPRISE BUYS Specially priced for this event (Not an over-the-counter sale plan)	RUG RUNNER 24x60", loop pile. 1.47
Steel Wool SOAP PADS Pack of 30. 43c	SUNBEAM SHAVERS Ladies', pink case. 6.99 Men's, white case. 12.99	36-Oz. WASTE BASKET Plastic. 89c

DRIVE SET HAIR SPRAY, 3 types. 14 oz.	3 for 1.99
REX MOVIE FILM, 8mm Color. 25 Ft.	13.95
TAPE RECORDER, 4-Transistor	8.88
WRIST WATCH, Calendar. Men's, Ladies'	1.00
CANNON TOWELS or DISH CLOTHS, each pack	.59
89c SEAMLESS NYLONS, Mesh or Sheer Knit	2.99
AIR MATTRESS, Vinyl. Pillow and pump	4.88
ALARM CLOCKS, Peek-A-Boo or Tiny	From 69c to 2.99
EASTER TOYS, Bunnies of all kinds.	1.59
BOXED STATIONERY, Fancy Finish	2.79
BUTANE LIGHTER, Cigarette	6.49
6-TRANSISTOR RADIO with battery, earphone, case	Some items plus Fed. Tax

MANY MORE ITEMS AT SALE PRICES—COME EARLY!

SCHNAPS



years of age, I was scared out of my wits and ran screaming to mother! The organ grinder apparently pulled in his monkey which brought them nearer to the front door where mother was trying to close those doors—only by then the monkey was there in the way! Now too scared to even scream, I backed away while mother tried to shoo at the monkey and the organ grinder pulled at the leash, and the monkey chattered! I backed right into the pail of water, sitting down in it with a splash. I was literally pulled out of the pail dripping, and taken back to the living room. Standing me on a chair, mother sopped me up with towels, bathed me, and was putting nice, dry clothes on me when the bell rang and mother went to the door.

I had never seen Hilda but I knew about her. She was the new "girl"—actually a nurse-maid for me—that mother had engaged. You see, I had had rheumatic fever rather badly and still needed considerable care and watching over. So there was Hilda, arriving just in time to catch me half-dressed. I was not yet four, but I had my "modesty" at being seen for the first time like that. I cried. They thought I was scared. I couldn't have put it into words then, but I felt that she should not have been brought in until I was all dressed—even dressed up. It was sort of a wordless emotion of frustration. Children have to endure many such moments of frustrations over which they

have no control. And I suppose I was pretty well upset over the monkey scare, too.

ELLINGTON

The third annual St. Luke musical show will be presented in St. Luke Hall on Sunday, Apr. 4, for the benefit of the St. Luke building fund. This year's show, entitled "Flying High," has an international travel theme and will be directed by John Anderson. Honorary chairman is the Rev. Maurice Sullivan, and co-chairmen are Mrs. Peter Pozzato and Harold Grover.

The Friendship Class of the Ellington Congregational Church will meet at the home of Mrs. Edna Boyle, Route 83, Ellington, on Monday, Apr. 5, at 8 p.m.

The Twirl and Twisters Square Dance Club will hold its regular Saturday night dance at St. Luke Hall, Apr. 3, at 8 p.m. Don Atkinson will call.

A quota of 75 pints has been set for the Red Cross bloodmobile to be held at the Apostolic Christian Church on Wednesday, Mar. 31. Mrs. Emmanuel Kloter of 65 Orchard St., chairman of the committee, announced more donors are needed in order to meet the quota. Anyone wishing to give can contact her for an appointment. Walk-in donors will also be accepted between the hours of 1:45 and 6:30 p.m.

The Rev. Eric Otto Pieper, pastor of Trinity Lutheran Church in Rockville from 1923 to 1963, died Mar. 23 in Tarrytown, N.Y. He was well known throughout the area. Funeral services were held at Trinity Lutheran Church, Rockville.

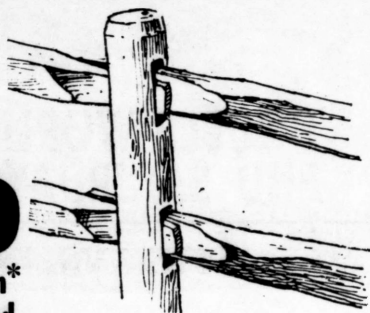
LUMBERJACK STORES®

One-Stop Personalized Service

SPLIT RAIL FENCE

—RUSTIC—CHESTNUT—

\$360
10' section*
Delivered



Delivery Guaranteed within TWO WEEKS of date order was placed.

Section Includes: 2—10' Rails
1—Line Post



LAND LIME

BIG 80 LB. BAG

69¢

Cash & Carry

Peat Moss Fafard Brand



2.99
4 CU. FT.

3.99
5 CU. FT.

Cash & Carry

Beauty On A Budget

Vinyl Acrylic

LATEX PAINT

\$2.99
gal.

MANY COLORS — WHITES INCLUDED



STUDS

— 2"x3" —

7 FT. **38¢**

8 FT. **42¢**

Cash & Carry

Scotts Guarantees That Turf Builder Will Give You A Better Lawn Than Any Other Fertilizer—or your Money Back.



JUMBO BAG
Covers 10,000 sq. ft.

8.98

Still America's Finest Lawn Food

McGUIRE **BAMBOO RAKES**

— 18" Width —

1.33

Solid Wood Handle — Finest Quality —

Pre-Finished **OAK PLYWOOD**

5.99
4' x 7' x 1/4"

Limed or Charcoal

Cash & Carry

ALUMINUM EXTENSION LADDERS

20 Ft. **16.97**
24 Ft. **19.99**
28 Ft. **24.80**

Thompsonville Branch Open: Wed., Thurs. & Fri. 'til 9:00 p.m.

36 WINDSOR ST. WINDSOR LOCKS NA 3-3321 | 238 BLOOMFIELD AVE. WINDSOR DIAL 688-3603 | 630 ENFIELD ST. THOMPSONVILLE DIAL RI 5-3338 | MOUNTAIN ROAD SUFFIELD, CONN. DIAL NO 8-7303 | HARTFORD AVE. GRANBY, CONN. DIAL 653-2556

HARTFORD AREA DIAL 522-2233 ★ SPRINGFIELD AREA DIAL 785-1343
● CREDIT TERMS ● CUSTOM DELIVERY

Open Daily 8 A.M.-6 P.M., Friday Evenings Till 8 P.M.

A DIVISION OF THE WINDSOR LOCKS LUMBER CO

INSURANCE

FOR ALL YOUR NEEDS

Worry-Free driving

... when you're insured

No need to worry about financial loss brought about by an accident or car theft ... when you're insured!



Full financial coverage for damage to your car ... injury to you or others.

We write complete coverages

BRIDGE Insurance



9 School St., Hazardville
RI 9-8357



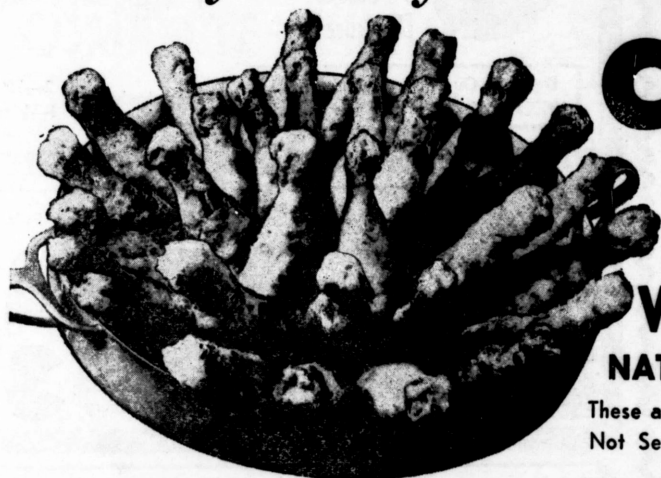
WG—Mrs. Annie Irish, N. Somers

CLIP AND SAVE!
100 FREE WORLD GREEN STAMPS
 with purchase of \$5 or more at
 South Road, Hazardville
 Dexter Plaza, Windsor Locks
 no stamps with cigarettes
 VALID THRU SATURDAY, APRIL 1

Hazardville — South Road
 Open Wed. - Thurs. - Fri. - Sat. nights until 9

DOUBLE WORLD GREEN STAMPS EVERY WEDNESDAY AND SATURDAYS 6:00 TO 9:00 P.M. AT HAZARDVILLE

Always Tasty... Always Delicious!



CHICKEN LEGS

WAYBEST NATIVE FRESH 39^c Lb.
 These are Genuine Parts—
 Not Sections or Quarters

WAYBEST CHICKEN BREASTS Lb. 59^c

Lean Rib Pork Roast	39^c lb	Cross Rib Roast	BONELESS CHUCK	79^c lb
Brisket Corned Beef	THICK END 49^c lb	Daisy Butts	PORK SHOULDER	69^c lb

MUCKE'S SLICED COLD CUTS
 • VEAL LOAF • PEPPER LOAF
 • OLIVE LOAF • OLD FASHIONED **59^c lb**

SNOW CROP ORANGE JUICE
 Frozen Food Special! **4 6 OZ CANS 95^c**

Cain's Mayonnaise	Save 20c on quart jar	59^c
Italian Imported Tomatoes	Gloria 35 oz can	37^c
Heinz Tomato Ketchup	2 14 oz bottles	39^c
Popular Instant Coffee	Save 10c on 6 oz jar	69^c
Ragu Spaghetti Sauce	plain, mushroom or meat 2 16 oz jars	\$1
Tetley Tea Bags	Save 36c 100 bags	89^c
Popular Bartlett Pears	choice in heavy syrup 4 16 oz cans	89^c
Popular White Enriched Bread	2 1 lb loaves	33^c

ALAN DRUG CO.

117490-D65

The **Rexall** Store

Prescription Specialists Since 1926

PHONE: RI 5-8118 - RE 7-5466

581 ENFIELD STREET

THOMPSONVILLE, CONN.

AS NATIONALLY ADVERTISED
IN LEADING MAGAZINES,
NEWSPAPERS, AND ON
RADIO AND TV

Rexall

ORIGINAL



LOOK! I GOT AN
EXTRA ONE
FOR ONLY
A PENNY MORE!

Rexall Regular or Fluoride
TOOTH PASTE

Leaves teeth thoroughly clean. The whole family
will like its refreshing flavor!

3 1/4 oz. tube
REG. 53c each **2 for 54c**
(KP-1197, 94)

SAVED

THURS. APRIL 1 thru SAT. APRIL 10

YOUR MONEY BUYS MORE



IN A REAL DRUG STORE

2 for the price of 1 - PLUS A PENNY!

Rexall GLYCERIN SUPPOSITORIES



Pure quality glycerin; induce gentle laxative action.
Adult or infant size.

JAR OF 12's
REG. 53c **2 for 54c**



Rexall RUBBING ALCOHOL

Finest quality. Contains glycerin
to help prevent skin dryness. Pleasant
fragrance. Unbreakable plastic
bottle.

PINT REG. 79c **2 for 80c**

69c Rexall GEL Rubbing Alcohol 8 fl. oz. (KD-476) **2 for .70**

59c Rexall ALCO-REX Rubbing Alcohol Pint. (KD-413) **2 for .60**



Cara Nome HAND LOTION

Rich in lanolin. Not sticky
or greasy.

8 fl. oz. bottle REG. 98c **2 for 99c**

Cara Nome HAND CREAM

Vanishing type, greaseless,
fragrant.

4-oz. Jar REG. 1.00 **2 for 1.01**



Rexall ASPIRIN

None finer made. Take home 2 bottles
at this big saving!

100's
Reg. 69c **2 for 70c**



Rexall BUFFERED ASPIRIN

Fast-acting, without fear of acid-upset
stomach.

100's
Reg. 98c **2 for 99c**



Rexall KLENZO ANTISEPTIC MOUTHWASH

Ruby-red, refreshing cinnamon flavor. Kills
contacted germs.

PINT
Reg. 79c **2 for 80c**



Rexall Mi-31 ANTISEPTIC MOUTHWASH

Amber color, "wake-up" taste.
Kills contacted germs.

PINT
Reg. 89c **2 for 90c**

3-ingredient formula for quick pain relief
MONACET APC tablets Rexall 100's (KD-842) Reg. 1.19 **2 for 1.20**

Creamy smooth, regular or mint
MILK OF MAGNESIA Rexall 12 fl. oz. (KD-484,354) Reg. 69c **2 for 70c**

Finest quality, tasteless, odorless
MINERAL OIL Rexall pint (KD-75) Reg. 79c **2 for 80c**

Prices subject to change without notice. Some items plus Federal Tax. Right reserved to limit quantities, subject to applicable laws.



**REXALL WILL PAY YOU
UP TO \$3.00 JUST FOR TRYING
AMERICA'S FAVORITE
VITAMIN PRODUCTS**



Only REXALL would make
such a generous offer!
Come in for your special
form and easy instructions.

HURRY! Offer expires April 15, 1965

(NOT ON OUR 1¢ SALE PLAN)



Rexall SUPER PLENAMINS

America's largest selling
vitamin-mineral product

Rexall MELTAMINS Jr.

The only chewable vitamin product
with liver concentrate and iron.



REXALL MINUTEMAN CHEWABLE VITAMINS

FOR CHILDREN

Delicious fruit-flavored tablets to
help protect against vitamin defi-
ciencies. Grown-ups like them, too!

100's
REG. 2.69 **2 for 2.70**



REXALL PANOVITE MULTI-VITAMINS

Contain more than the minimum daily re-
quirement of all vitamins with set minimums.

100's
REG. 2.98 **2 for 2.99**

2.00 PANOVITE CHEWABLES 60's (KV-700) **2 for 2.01**

4.95 PANOVITE with MINERALS 100's (KV-815) **2 for 4.96**



DICALCIUM PHOSPHATE
with Vitamin D
100 tablets
Reg. 1.39 **2 for 1.40**

GER-RITE
100 Tablets
Reg. 2.75 **2 for 4.80**

GER-RITE
100 Tablets
Reg. 2.75 **2 for 2.80**

Rexall
ORIGINAL
\$1
THURS. APR

Cascade CELLOPHANE TAPE 1/2" x 400"
Reg. 39c **2 for 40c**

Cascade GIFT WRAPS
Birthday, Shower, Juvenile, general.
Reg. 25c **2 for 26c**

White TISSUE PAPER
Pack of 8 sheets, 20" x 30"
Reg. 15c **2 for 16c**

Rayon CURLING RIBBONS
To glamorize gifts
Reg. 25c **2 for 26c**
39c Gift Ribbon 3/8" x 125 ft. (KS-916) **2 for 40c**

Rexall DEODORANTS
CHECK PERSPIRATION AND ODOR
RO-BALL or COOL BLUE CREAM
Reg. 69c **2 for 70c**
COOL BLUE ROLL-ON or REDI-SPRAY Aerosol
Reg. 98c **2 for 99c**

MEDICINE CHEST

- 98c ANALGESIC BALM Rexall 1 1/4 oz. (KD-338) 2 for .99
- 1.29 ANTIHISTAMINE TABLETS Rexall 50's (KD-661) 2 for 1.30
- 15c ASPIRIN Rexall 5-gr. 12's (KD-931) 2 for .16
- 43c ASPIRIN Rexall 5-gr. 50's (KD-934) 2 for .44
- 89c ASPIRIN Rexall 10-gr. 100's (KD-940) 2 for .90
- 39c CHILDREN'S ASPIRIN Rexall 1 1/4 gr., flavored, 50's (KD-939) 2 for .40
- 35c CHILDREN'S ASPIRIN Rexall 1 1/4 gr., flavored, 50's (KD-64) 2 for .36
- 49c MONACET APC TABLETS Rexall, 25's (KD-841) 2 for .50
- 79c CASCARA COMPOUND Laxative, 100's (KD-824) 2 for .80
- 98c CHLOROPHYLL MOUTH WASH Rexall pint (KD-496) 2 for .99
- 95c DIURETIC PILLS Rexall 60's (KD-171) 2 for .96
- 1.39 EUDICAINE SUPPOSITORIES Rexall 12's (KD-827) 2 for 1.40
- 98c EYELO EYE LOTION 8 fl. oz. (KD-380) 2 for .99
- 55c FOOT POWDER Rexall 4 oz. (KD-156) 2 for .56
- 29c BORIC ACID SOLUTION N.F. Rexall 4 fl. oz. (KU-2413) 2 for .30
- 80c GLYCERIN Rexall 3 fl. oz. (KU-1269) 2 for .81
- 98c BODY MASSAGE LOTION Rexall 8 fl. oz. (KD-124) 2 for .99
- 1.10 HISTACALMA LOTION Rexall, 6 fl. oz. (KMI-673) 2 for 1.11
- 59c MILK OF MAGNESIA TABLETS Rexall 85's (KD-261) 2 for .60
- 29c MILK OF MAGNESIA TABLETS Rexall 36's (KD-260) 2 for .30
- 75c PETROFOL MINERAL OIL Rexall Pint (KD-526) 2 for .76
- 59c SODA MINTS Rexall 140's (KD-239) 2 for .60
- 45c TOOTHACHE DROPS OR WAX Rexall (KD-441,2) 2 for .46
- 59c CALAMINE LOTION Rexall Plain or Phenol. 8 fl. oz. (KU-1834,44) 2 for .60
- 59c CASTOR OIL Rexall 3 fl. oz. (KU-1769) 2 for .60
- 63c GLYCERIN & ROSE WATER Rexall Plain or with Benzoin. 4 fl. oz. (KU-1273,93) 2 for .64
- 35c ZINC OXIDE OINTMENT Rexall 1-oz. tube (KD-834) 2 for .36
- 59c ZINC OXIDE OINTMENT Rexall 2-oz. tube (KD-835) 2 for .60
- 49c PEROXIDE 3% 10 Vol., medicinal, Rexall pint (KU-285) 2 for .50
- 73c WITCH HAZEL Rexall pint (KU-3665) 2 for .74
- 55c EPSOM SALT Rexall 1 lb. (KU-1055) 2 for .56
- 25c EPSOM SALT Rexall 4 oz. (KU-1053) 2 for .26
- 89c PETROLEUM JELLY, WHITE Rexall 1 lb. (KOI-33) 2 for .90

FIRST AID NEEDS (cont.)

- 39c TINCTURE IODINE USP 2%, Rexall 1 fl. oz. (KU-3041) 2 for .40
- 98c BACITRACIN Ointment, 1/2-oz. (KOI-101) 2 for .99
- 1.49 NEOMYCIN-BACITRACIN Ointment 1/2-oz. tube (KOI-102) 2 for 1.50
- 1.58 POLYMYXIN Neomycin-Bacitracin Ointment, 1/2-oz. tube (KOI-114) 2 for 1.59
- 2.70 POLYMYXIN Neomycin-Bacitracin Ointment, 1-oz. tube (KOI-114) 2 for 2.71
- 98c TRI-SALVE Triple Antibiotic Ointment, 1/4-oz. tube (KOI-115) 2 for .99
- 2.69 TRI-SALVE 1-oz. tube (KOI-115) 2 for 2.70

DENTAL NEEDS

- 69c DENTAL PLATE BRUSH Rexall Deluxe (KB-25) 2 for .70
- 39c DENTAL FLOSS Rexall, 30 yds. (KB-361) 2 for .40
- 89c DENTAL FLOSS Rexall, 100 yds. (KB-362) 2 for .90
- 98c TOOTH PASTE, AEROSOL Rexall, 7 oz. (KP-1198) 2 for .99
- 69c DENTAL PLATE CLEANER Rexall self-acting, 7 1/2 oz. (KP-3274) 2 for .70
- 69c TOOTHBRUSH Triplex Natural Bristle, Professional or Convex (KB-348, 49) 2 for .70

COUGH & COLD NEEDS

- 29c ASPIREX COUGH DROPS (KD-250) 2 for .30
- 83c BIOKETS Troches, 15's or Lozenges, 10's w/ Vitamin C (KD-818,9) 2 for .84
- 1.29 CHERROSOTE COUGH SYRUP 8 fl. oz. (KD-850) 2 for 1.30
- 39c COLD SORE LOTION 1/4 fl. oz. (KD-533) 2 for .40
- 49c COLD SORE OINTMENT 1/2 oz. (KD-532) 2 for .50
- 98c NASAL SPRAY Rexall 1/2 fl. oz. (KD-648) 2 for .99
- 98c TRIPLE ACTION CHEST RUB 2 fl. oz. (KD-641) 2 for .99
- 1.19 TRIPLE ACTION COUGH SYRUP Adult 4 fl. oz. (KD-417) 2 for 1.20
- 98c TRIPLE ACTION COUGH SYRUP Child's 3 fl. oz. (KD-379) 2 for .99

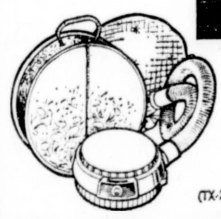
FOR MEN ONLY

- 69c AFTER SHAVE LOTION Lavender or Redi-Shave 5 fl. oz. (KP-3220,40) 2 for .70
- 98c PRE-SHAVE LOTION Lavender or Redi-Shave 5 fl. oz. (KP-3225,41) 2 for .99
- 1.45 RAZOR BLADES Rex Stainless Steel, Double Edge, Dispenser Pack, 10's (KX-804) 2 for 1.46
- 79c RAZOR BLADES Rex Stainless Steel, Double Edge, Pack of 5 (KX-802) 2 for .80

VITAMIN VALUES

- 3.25 ALPHACAPS Vit A, 25,000 Units, 100's (KV-435) 2 for 3.26
 - 6.39 ALPHACAPS Vit. A, 50,000 Units, 100's (KV-755) 2 for 6.40
 - 1.39 BREWER'S YEAST Rexall 250's (KV-939) 2 for 1.40
 - 79c BREWER'S YEAST Rexall 100's (KV-935) 2 for .80
 - 2.19 MULTI-VITAMIN TONIC V-10, Rexall pint (KV-10) 2 for 2.20
 - 2.59 VITAMIN B COMPLEX Fortified Caps., 100's (KHC-130) 2 for 2.60
 - 5.95 MINERALIZED B COMPLEX Rexall 100's (KV-795) 2 for 5.96
 - 1.98 BEEF, WINE & IRON TONIC Rexall pint (KD-472) 2 for 1.99
 - 7.39 THERAMINS-M Therapeutic multi-vitamins with minerals, 100's (KV-785) 2 for 7.40
- VITAMIN C (Ascorbic Acid) 100-TABLET BOTTLES**
- 45c 25 mg. (KCT-533) 2 for .46
 - 77c 50 mg. (KCT-549) 2 for .78
 - 1.19 100 mg. (KCT-584) 2 for 1.20
 - 2.53 250 mg. (KCT-656) 2 for 2.54
 - 4.79 500 mg. (KCT-725) 2 for 4.80
 - 3.19 CHEWABLE VITAMIN C fruit-flavored, 100 mg. 250's (KCT-772) 2 for 3.20

SURPRISE BUYS



Dominion HAIR DRYER
With hood, hose, shoulder strap.
In hat-box case. **8.99**



5-foot RUG RUNNER
Viscose loop pile with foam backing, finished edges. **1.47**



EASTER TOYS
Bunnies to cuddle or big enough to ride!
Plush, inflatable, or musical.
from 69c to 2.99



ALARM CLOCK
Peek-A-Boo boudoir style or smaller Alarm with luminous dial.
Each 4.88



SUNB

LADIES
With exc. Attractive
MEN
Automatic sharp-cutting action



Choose Brite Soit shining
Gener

FIRST AID NEEDS

- 30c GAUZE BANDAGE Rexall 2" x 10 yds (KW-2202) 2 for .31
- 70c QUIK-PADS Rexall 3" Sterile Gauze Squares, 25's (KW-2212) 2 for .71
- 65c QUIK-BANDS Rexall Sterile Adhesive Bandages, 45's (KW-3181,88) 2 for .66
- 69c STERILE COTTON Rexall 4-oz. (KW-2258) 2 for .70
- 98c AEROSOL MERTHIOLOATE (Thimerosal Lilly) 1-oz. (KW-300) 2 for .99

- 45c QUIK-BANDS 31's Sterile Adhesive Bandages, Rexall (TW-3180, 7) .31
- SANITARY NAPKINS Soft, absorbent. (TW-300) pack of 40 1.19
- BATH SCALE Rex-Way, Decor. for colors (TW-555-9) 3.99
- 98c RUBBER GLOVES glove lined (TR-151) .59
- 1.49 RUBBER GLOVES cloth-lined (TR-171) .99

- 3.98 FEMININE SYRINGE Snugfold, Colors (TR-415-8) 2.59
- STATIONERY Fancy Finish (TS-801) Box 1.59
- GREETING CARDS All occasions (TS-850) Box .98
- 50c FILLER PAPER 3 or 5-hole, ruled (TS-354, 5, 8) 3 for 1.16
- PLAYING CARDS 100% Plastic, Single deck (TS-825) 1.66
- PLAYING CARDS 100% Plastic, Double deck (TS-860) 3.29

- 89c NYLONS Seamless Spunlex, Sheer or Mesh, Popular shades (TZ-505, 6) .59
- 1.00 GOLF BALLS Dura-Rex, Vitalized center (TB-240) 3 for 1.49
- AIR MATTRESS 6-ft. vinyl with pump (TB-2450) 2.99
- WRIST WATCHES Calendar type, Men's, Ladies' (TX-420, 22) each 8.88
- ALARM CLOCK Rex Electric, plain dial (TX-461) 2.99
With luminous dial (TX-462) 3.69

EXPERT PRESCRIPTION SERVICE

Prompt, courteous service is part of every prescription we fill. You get highest quality pharmaceuticals every day at Rexall. Your good health is our primary concern.

YOUR MONEY BUYS MORE



IN A REAL DRUG STORE



REXALL AEROSOL SHAVE CREAM

Rich, push-button lather wilts whiskers fast! Lavender or Redi-Shave, regular or mentholated.

(KP-3227, 28; 3244, 45)

11-oz. Aerosol
REG. 98c

2 for 99c

BOXED STATIONERY

Quality writing paper with matching envelopes. Choice of Soft Tones, Grandeur, Parchment, or Traditional Linen.



(KS-802-5)

REG. 2.00 ea

2 for 2.01

1.00 BOXED STATIONERY. Many styles. 2 for 1.01

REXALL BLUE ORAL Antiseptic MOUTHWASH

Cool blue mouth-refresher. Kills contacted germs in seconds. Sweetens breath.



(KB-70)

8 fl. oz.

REG. 69c

2 for 70c

49c TOOTH BRUSHES

2 for .50

39c Youth's Toothbrush, Klenzo (KB-363) 2 for .40

29c Child's Toothbrush, Klenzo (KB-360) 2 for .30

89c RUBBER GLOVES

2 PR. .90

98c SHAMPOO

2 for .99

1.75 DUSTING POWDER

2 for 1.76

1.69 FEVER THERMOMETER

2 for 1.70

55c REX FILM

2 for .56

VITAMINS (cont.)

VITAMIN B-1 (Thiamine Hydrochloride) 100-TABLET BOTTLES

- 74c 10 mg. (KCT-566) 2 for .75
- 1.45 25 mg. (KCT-659) 2 for 1.46
- 2.25 50 mg. (KCT-658) 2 for 2.26
- 3.98 100 mg. (KCT-614) 2 for 3.99
- 8.19 250 mg. (KCT-741) 2 for 8.20

VITAMIN B-12 CONCENTRATE 100-TABLET BOTTLES

- 98c 5 mcg. (KCT-752) 2 for .99
- 1.88 10 mcg. (KCT-730) 2 for 1.89
- 3.28 25 mcg. (KCT-731) 2 for 3.29
- 5.28 50 mcg. (KCT-765) 2 for 5.29
- 9.45 100 mcg. (KCT-794) 2 for 9.46

FEMININE HYGIENE

- 2.98 FEMININE BULB SYRINGE White or pink (KR-48-50) 2 for 2.99
- 3.89 FOUNTAIN SYRINGE Victoria, red, white (KR-530,1) 2 for 3.90
- 4.59 COMBINATION SYRINGE Victoria, red, white (KR-540,1) 2 for 4.60
- 1.19 HYGIENIC POWDER Rexall 6 oz. (KD-432) 2 for 1.20
- 99c HYGIENIC LIQUID Rexall 6 fl. oz. (KD-699) 2 for 1.00

BABY CARE BUYS

- 35c ASPIRIN Tiny Tot, 1/2 gr., 100's (KD-206) 2 for .36
- 45c COTTON SQUARES Rexall, 80's (KN-44) 2 for .46
- 98c COTTON SQUARES Rexall, 200's (KN-50) 2 for .99
- 89c BABY TALC Rexall 1 lb. (KN-908) 2 for .90
- 89c BABY LOTION Baby Care™, 10 fl. oz. (KN-922) 2 for .90
- 89c BABY OIL Baby Care™, 10 fl. oz. (KN-923) 2 for .90
- 49c BABY PANTS Vinyl, All sizes (KN-188,622-5) 2 for .50
- 39c QUIK-SWABS Rexall 100's (KN-42) 2 for .40
- 59c QUIK-SWABS Rexall 200's (KN-45) 2 for .60
- 39c QUIK-SWABS Double-Tip, Rexall 54's (KN-47) 2 for .40
- 59c QUIK-SWABS Double-Tip, Rexall 90's (KN-51) 2 for .60

TOILETRIES

- 98c PERFUMED TALC Lorie 1 lb. (KP-3192) 2 for .99
- 1.25 POWDER MITT Sweet'n Lovely (KCN-2078) 2 for 1.26

TOILETRIES (cont.)

- 2.00 BEAUTY OIL MIST Sweet'n Lovely After-Bath 7 oz. Aerosol (KCN-2074) 2 for 2.01
- 2.00 DUSTING POWDER Sweet'n Lovely 7 oz. Aerosol (KCN-2085) 2 for 2.01
- 1.19 BATH OIL Lorie Bouquet or Sequoia Pine, 6 fl. oz. (KP-618,15) 2 for 1.20
- 2.50 COLOGNE Bouquets of Spring 4 fragrances (KCN-3300) 3 oz. 2 for 2.51
- 1.25 COLOGNE GELÉE 4 fragrances (KCN-2003) 2 for 1.26
- 1.50 COLD CREAM Cara Nome 3 1/4 oz. (KCN-3160) 2 for 1.51
- 1.50 DRY SKIN CLEANSING CREAM Cara Nome 3 1/4 oz. (KCN-3162) 2 for 1.51
- 2.00 NIGHT CREAM Cara Nome 2 1/4 oz. (KCN-3164) 2 for 2.01
- 2.50 HORMONE CREAM Cara Nome 2 1/4 oz. (KCN-3166) 2 for 2.51
- 1.25 SOAP WITH LANOLIN Cara Nome Box of 3 cakes (KCN-601) 2 for 1.26
- 39c NAIL POLISH REMOVER Rexall 4 fl. oz. (KP-1522) 2 for .40
- 1.25 COLOR SHAMPOO Cara Nome (KCN-281-92) 2 for 1.26
- 25c LITEN-OXIDE For hair-coloring products 6%, 20 Vol., Rexall 4 fl. oz. (KCN-279) 2 for .26
- 98c HAIR RINSE Concentrated Dandruff Treatment or Brite Conditioning 8 fl. oz. (KP-3187,8) 2 for .99

EVERYDAY HOME NEEDS

- 98c AIR REFRESHER Rexall 11-oz. aerosol (KD-927) 2 for .99
- 89c MOTH CRYSTALS Rexall 16 oz. (KD-542) 2 for .90
- 1.95 MOTHPROOFER Rexall 10-oz. aerosol (KD-611) 2 for 1.96
- 1.39 PINE OIL DISINFECTANT No. 6, Rexall pint (KU-175) 2 for 1.40
- 1.19 INSECT REPELLENT AEROSOL Rexall, 5 oz. (KD-919) 2 for 1.20
- 1.59 INSECT KILLER AEROSOL Target, 16 oz. (KD-912) 2 for 1.60
- 87c INSECTICIDE Rexall 7-oz. aerosol (KU-1869) 2 for .88
- 1.19 SPACE FRAGRANCE, ADRIENNE 5-oz. aerosol (KP-477) 2 for 1.20
- 3.59 HOT WATER BOTTLE, VICTORIA Red or white (KR-525,6) 2 for 3.60
- 3.89 HOT WATER BOTTLE, VICTORIA Red 2-heat (KR-545) 2 for 3.90
- 1.98 ICE CAP 9" Cloth (KR-249) 2 for 1.99
- 1.00 NOTES 4 styles (KS-813,14,18,302) 2 for 1.01
- 50c THANK YOU NOTES (KS-332) 2 for .51
- 89c POUND PAPER or ENVELOPES Elite Ripple (KS-2060, 1) 2 for .90
- 25c AIRMAIL TABLET (KS-2548) 2 for .26
- 59c TYPEWRITER PAPER, PACK (KS-844) 2 for .60
- 39c STENO BOOK (KS-846) 2 for .40
- 49c MARKING PEN Deluxe (KS-826) 2 for .50
- 69c BALL POINT PEN (KS-134) 2 for .70
- 39c BALL POINT PEN (KS-1742) 2 for .40
- 5c LEAD PENCILS Rexall (KS-855-7) 2 for .06
- 39c TYPEWRITER TABLET (KS-786) 2 for .40
- 49c BALL POINT PEN REFILL (KS-831) 2 for .50
- 1.00 PLAYING CARDS Bridge, Poker or Pinochle Single deck (KS-1192, 3, 75) 2 for 1.01
- 1.98 PLAYING CARDS Bridge Double Deck (KS-1197) 2 for 1.99
- 2.00 SHOWER CAP Deluxe Nylon Tricot (KB-2368) 2 for 2.01
- 1.00 SHOWER CAP Vinyl, X-Large (KB-1092) 2 for 1.01
- 79c SHOWER CAP, BOUFFANT (KB-2305) 2 for .80
- 1.00 WATCHBAND Nylon or Leather Men's and Women's (KX-4440, 2) 2 for 1.01
- 1.50 WATCHBAND, EXPANSION Men's and Women's (KX-4441) 2 for 1.51
- 39c LIGHT BULBS 25, 40, 60, 100 watt (KX-2945-48) 2 for .40
- 49c COTTON BALLS Rexall, Twirl Puffs. 100 white (KW-2268) 2 for .50
- 10c SAFETY PINS (KX-53) 2 for .11
- 59c EXTENSION CORD 6 ft. (KX-4479) 2 for .60
- 25c SHOE LACES Ass't. sizes, colors (KX-520-36) 2 Pr. .26
- 25c MEN'S HANDKERCHIEFS (KX-1628) 2 for .26

SPECIALLY PRICED FOR THIS EVENT

(NOT ON OUR 1c SALE PLAN)

CREAM SHAVERS

Each in gift box. U.L. Approved

SUNBEAM
2-sided "Micro Twin" shaving head. Plastic case with smart white and gold trim. **6.99**

SUNBEAM
Adjusting rollers. Precision honed extra edges. 11-degree angle scissor-like cut. **12.99**

BRITE SET

HAIR SPRAY

Best type for your hair style: regular, casual, or hard-to-hold. Holds it in place with its invisible "power", and keeps it

4-oz. size **3 for 1.99**



(TX-4496)

WASTE BASKET

Large 36-quart, in sturdy plastic with embossed design.

89c



(TX-4502)

30 SOAP PADS

Made of steel Dura-wool, to scour pots & pans shining clean!

Pack of 30 **43c**

REXALL FACIAL TISSUES



(TX-640-2,44)

Soft, strong, absorbent. White, pink, yellow, orchid.

400's **5 boxes 99c**

REX-RAY 1-GAL.

VAPORIZER

Durable heat-resistant plastic. Steams 8 to 10 hours. Guaranteed.



(TX-279)

3.99

- BATTERIES Flashlight D, C, or AA (TX-546, 48, 51) 4 for .50
- 39c BATTERY Electrex. 9-Volt Transistor (TX-547) .29
- CANNON SPECIALS Packs of 3 Terry Towels, 4 kitchen Towels, or 10 Dish Cloths (TX-2961-3) per pack 1.00
- CIGARETTE LIGHTER Butane. Windguard (TX-4464) 2.79
- TAPE RECORDER 4-transistor with earphone, mike, and batteries (TX-2727) 13.95

- 6-TRANSISTOR RADIO case, battery, earphone (TX-2927) 6.49
- MIRROR Gooseneck. 5" Plain and magnifying (TX-2941) .99
- IRONING BOARD PAD & 2 COVERS Silicone surface (TX-4461) .99
- GARDEN HOSE 75-ft. Sturdy Plastic. (TX-4485) 2.49
- LAWN SPRINKLER 25-ft. flexible sprinkler-soaker (TX-4486) 1.88
- AUTOMATIC TOOTH BRUSH Dominlon Cordless; with 4 brushes and storage case. (TX-2869) 12.99

- PHOTOFLASH LAMPS Rex. In sleeves of 12: Size AG-1B or M2 (TY-791,6) .99
- Size AG-1 (TY-795) .89
- Size M2-B or #5 (TY-792,3) 1.09
- Size #5B (TY-794) 1.39
- FILM, 8 mm MOVIE 25-ft. Rex indoor or outdoor (TY-754,62) 1.99
- FILM, 35 mm COLOR Rex 20-exposure (TY-766) 1.77
- SCISSORS 6" or 7" Household, Barber, Bent, others (TX-4467-73) ea. 1.27

1 Rexall ORIGINAL SALE

2 for the price of 1- PLUS A PENNY!

THURS. APRIL 1 thru SAT. APRIL 10



SUNGLASSES

Men's and women's sports and fashion styles, and junior styles for kids.

REG. 39c to 2.98

NOW 2 For the PRICE OF 1- PLUS A PENNY!



MANICURE IMPLEMENTS

Nail Clips, Files, Scissors, Tweezers, Nippers, Toenail Clippers, Emery Boards.

REG. 19c to 5.00

NOW 2 For the PRICE OF 1- PLUS A PENNY!

Fresh Spring Fragrances...

your rare opportunity to buy two for the price of one... plus a penny!



GOLDEN LILAC

MIST COLOGNE, a spring flower-laden fragrance in a lovely 2-oz. aerosol.

REG. 2.50
2 for 2.51

1.75 GOLDEN LILAC DUSTING POWDER 5 oz. with puff (KCN-3384) **2 for 1.76**
 2.00 GOLDEN LILAC COLOGNE 2 1/2 fl. oz. (KCN-3383) **2 for 2.01**
 1.50 GOLDEN LILAC SOAP Box of 3 cakes (KCN-3385) **2 for 1.51**

SPRING LILY

DUSTING POWDER with a delicate Lily of the Valley fragrance. Boxed, with puff. 4 1/2 oz.

REG. 1.75
2 for 1.76

2.50 MIST COLOGNE aerosol, 3-oz. (KCN-3112) **2 for 2.51**
 1.50 SPRING LILY COLOGNE 4 fl. oz. (KCN-3110) **2 for 1.51**
 1.50 SPRING LILY SOAP Box of 4 cakes (KCN-3114) **2 for 1.51**

"Sheer Comfort" Nylon SUPPORT STOCKINGS

All-nylon stretch. Seamed or seamless. Petite, Average, Tall, X-Long.

REG. 4.95 Pr.

2 pr. 4.96

5.95 LYCRA-NYLON SUPPORT STOCKINGS (KZ-414) **2 Prs. for 5.96**

Electrex 3-Speed HEAT PAD

Wetproof inner pad, with removable outer flannel cover. 7-foot cord.

REG. 5.95

2 for 5.96

REXALL POLYMULSION

Liquid Multi-Vitamins for Children. Delicious fruit flavor. Pint.

REG. 3.89

2 for 3.90

1.25 POLYMULSION 4 fl. oz. (KV-103) **2 for 1.26**

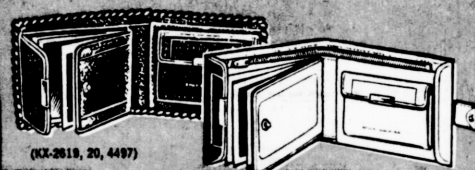
RADIANCE COSMETICS

Choice of 6 harmonizing shades.

- COMPACT POWDER (KCN-2743-46)
- FACE POWDER (KCN-2711-16)
- LIQUID FOUNDATION (KCN-2761-66)

REG. 1.50 each

2 for 1.51

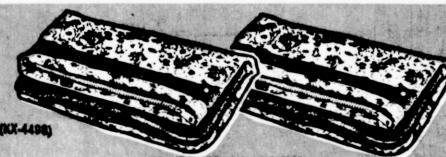


BILLFOLDS

Men's, ladies' wallets, French purses or Pleatone fashion billfolds.

REG. 2.00 each **2 for 2.01**

2.98 BILLFOLDS, LEATHER Men's and Ladies' "Sutton Park". Deluxe features (KZ-1108, 11) French purse (KZ-0884) **2 for 2.99**



CARRY-ALL COSMETIC BAGS

To hold your make-up needs, keep purse uncluttered. Many attractive styles.

REG. 2.00 ea. **2 for 2.01**

Rexall SACCHARIN

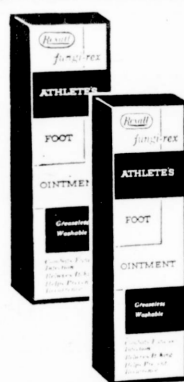


1000 1/2-Grain Tablets REG. 1.39 **2 for 1.40**

- 39c 1/4-grain, 100's (KD-871) **2 for .40**
- 49c 1/2-grain, 100's (KD-874) **2 for .50**
- 59c 1-grain, 100's (KD-877) **2 for .60**
- 1.19 1/4-grain, 1000's (KD-873) **2 for 1.20**
- 1.59 1-grain, 1000's (KD-879) **2 for 1.60**

Rexall FUNGI-REX

FOR ATHLETE'S FOOT



- 1 1/2-oz. Tube (KD-565) REG. 98c each
- Greaseless, 1 1/2-oz. Tube (KD-467) **2 for 99c**
- Lotion, 2 fl. oz. (KD-450)
- Liquid, 3 fl. oz. (KD-582)
- 1.69 Aerosol, 4 oz. (KD-584) **2 for 1.70**

Maraschino LIPSTICK

Fashion shades: Baby Pink, O-So-Pink, Coral Reef, Pumpkin, Clear Red, Action Red.

REG. 1.00

2 for 1.01

1.50 Maraschino LONG-LINE LIPSTICK (KCN-3461-66) **2 for 1.51**

1c SALE OF HAIR NEEDS

2 for the price of 1-PLUS A PENNY!

BOBBY PINS

Black or Bronze, rubber tip. (KB-1905, 6)

Card of 60's. REG. 25c

2 for 26c

Card of 100's. (KB-1946, 7)

REG. 39c

2 for 40c

HAIR ACCESSORIES

Assorted Rollas, Clips, Nets, Beauty Bows, Bandeaux, Curl End Papers, etc.

REG. 25c to 1.98

NOW 2 for the PRICE of 1- PLUS A PENNY!

COMBS

Aluminum, hard rubber and nylon combs. Popular styles. (KB-1747, 89, 2326)

REG. 29c to 69c

NOW 2 for the PRICE of 1- PLUS A PENNY!

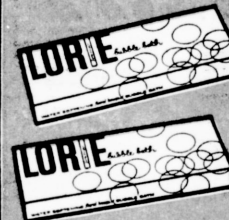
HAIR BRUSHES

Nylon and Natural bristles in men's Club and ladies' assorted styles. (KB-211, 691, 417)

REG. 1.00 & 3.00

NOW 2 for the PRICE of 1- PLUS A PENNY!

Lorie BUBBLE BATH



Fragrant bubbles for your bath! Softens water, too. Box of 20 packets.

REG. 65c

2 Boxes 66c

25c TABLET Elite Linen. Letter or Note Size. Ruled or Unruled. (KS-523-6) **2 for .26**

25c ENVELOPES Elite Linen. Plain, Return Address, Airmail. Social or Business Size. (KS-520, 1609-11, 13, 1681, 2) **2 Packs .26**

15c ENVELOPES White, Social or Business Size. (KS-1602, 80) **2 Packs .16**

25c ADHESIVE TAPE Rexall Waterproof. 1/2" x 5 yds. (KW-4103) **2 for .26**

43c ADHESIVE TAPE Rexall Waterproof. 3/2" x 10 yds. (KW-4107) **2 for .44**

69c FLASHLIGHT 3-position switch. (KX-4478) **2 for .70**

49c LIGHTER FLUID Kleer Flame. 8 fl. oz. (KX-1190) **2 for .50**

79c LIGHTER FUEL BUTANE. 3 1/2 oz. (KX-2078) **2 for .80**

69c COTTON BALLS Rexall Sterile. 130's. (KN-48) **2 for .70**

98c COTTON BALLS Rexall Sterile. 200's. (KN-39) **2 for .99**