

Scarfo Claims Certain Town "Forces" Tried To Stop Him

In a press release made public Monday, D. Carl Scarfo, Republican Councilman-at-Large wants to know why Mayor Frank Mancuso and his "forces" tried to stop him from listening to the residents of Windsor Court.

Police Seek Clues In School Break

Police are investigating a break-in and robbery at the Henry Barnard School and the administration wing on Shaker Rd., which was discovered on Monday.

Chamber Closed Thurs. And Fri.

The Greater Enfield Chamber of Commerce office at 9 North Main Street, will be closed in observance of Thanksgiving on Thursday and Friday.

Drugline Number Is 623-2162

Persons using this Drugline number need not identify themselves. All calls are confidential. The Drugline is in service Mondays through Fridays from 4 p.m. to midnight. On Saturdays, Sundays and holidays, the Drugline is operational from 8 a.m. to midnight.

ents concerning their feelings and welfare in residing at the elderly housing unit.

Scarfo accused the mayor of reaching "an all-time low" by saying he violated the Town Charter, adding the mayor continues to "enjoy distorting the truth."

The Republican councilman said the mayor made public his remarks on the day of the scheduled Windsor Court meeting "in hopes that I would cancel the meeting."

"The mayor should know me better than that," said Scarfo. "I don't scare easily." He added, with all his years on the council, Mayor Mancuso should have learned that a councilman should never refuse to listen to a resident or taxpayer.

Scarfo said that there are witnesses to the fact that he did not order or direct the administration to do anything, but simply asked. He said as for violating council policy and procedures, all the mayor has to do is read the copy of the press release and that he will find no mention of the words "special meeting." Scarfo said, therefore, his action was not subject to the policy and procedures of the council. He said he wanted the members of the Town Council to know what was asked of him, what he was doing about it, when and why and, he said, if they wanted to take part in it, they were welcome.

"I can readily understand why people do not want to run for the council and be subjected to Mayor Mancuso's dashboard," said Scarfo, concluding, "Well, Mr. Mayor, you've picked on the wrong man, I won't yield to your political machine."

Alfano Reelected Pres. Pro Tempore

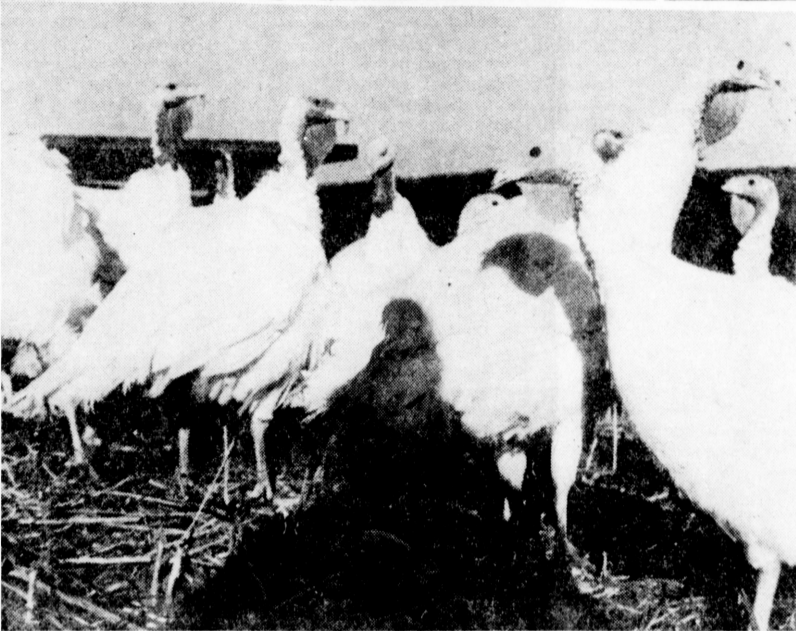
Charles T. Alfano District 7 State Senator, has been re-elected president pro tempore of the Senate.

The Suffield Democrat will be returning to the Senate for his seventh term when the Legislature reconvenes in January.

As president pro tempore of the Senate, Alfano is third in command of the state government, following the governor, and lieutenant governor.

Although the newly elected governor, Thomas J. Meskill, and the newly elected lieutenant governor, T. Clark Hull, are Republicans, the state legislature is still controlled by Democrats by a majority of 19 to 17 in the Senate and 99 to 78 in the House of Representatives.

One of the new Republican representatives is Mrs. Astrid Hanzalek of Suffield from the 40th Assembly District, which includes Suffield, Granby and East Granby.



Bird Of The Day

Tomorrow is Thanksgiving Day, a day set aside to give thanks for all our benefits here in America. It is a day on which the traditional meal consists of turkey, several of which are shown above. The photo was taken at the turkey farm of Mr. and Mrs. John Raisbeck, 1330 N. Grand St., West Suffield.

Reason Of Mrs. Weatherby's Firing Remains Mystery, Nobody Is Talking

Mrs. Geraldine Gonzalez, of 14 Duprey Rd., has been named acting senior field worker at the Neighborhood Center Anti-Poverty Program, succeeding Mrs. Mulviner Weatherby, who was fired last week.

The Neighborhood Center is affiliated with the Community Renewal Team of Greater Hartford. The program offers social services to low income residents and emphasizes the objective of helping people help themselves.

Although the center is funded by the CRT, employees at the

center are paid by and fall under the jurisdiction of the Enfield Department of Social Services.

Mrs. Dorothy Allen, head of Social Services, declined to make any comment as to why Mrs. Weatherby was fired.

Mrs. Allen said, "You will have to ask her why she was released."

Mrs. Weatherby has not given any reason for her dismissal. She explained that although she received a letter of termination, no reasons for dismissal were included.

Mrs. Allen did explain that Mrs. Gonzalez was appointed because of her seniority, although the next person in line for the job is Mrs. Margaret Arietti, a former policewoman.

(Continued on Page 2)



Police Toy For Joy Campaign Gets Under Way This Friday

Sgt. Ed Wosko, publicity; Mrs. Connie Ragion, chairman; and Sgt. Wallace Bennell, treasurer, are shown planning the 13th Annual Police Toy For Joy Fund which officially and traditionally opens the day after Thanksgiving. This year's goal is \$2,000 and is under the auspices of the Enfield Police Community Foundation. Contributors are asked to submit only new toys or cash which may be delivered to police headquarters at Town Hall.

Fox Drafts Criteria For Elderly Housing Sites

Paul W. Fox, Director of Planning and Executive Director of Redevelopment, has issued a Planning Criteria memorandum to Louis Rago, Executive Director of the Enfield Housing Authority concerning housing sites for the elderly. His memorandum was listed under two categories, location and site.

Location criteria: Proximity to neighborhood, and convenience to shopping facilities. Proximity to churches, synagogues, etc. Proximity to specialized community and entertainment facilities other than those provided within the project.

Proximity to park spaces suitable for passive recreation, sitting; conversation; walking. Residents must not have to cross a heavily-travelled intersection or street to reach the above.

Proximity means within one-quarter mile and five minutes walking distance. Site criteria: Peace, quiet, sense of enclosure, intimate small scale spatial potential within site either as an inherent quality of the site or inherent in development potential.

Detachment from intensely used areas of the town, but not divorce from same. Privacy: Site should provide buffer spaces between residence area and neighboring property uses (industry, schools, major traffic arteries, other uses generating unreasonable noise) must be avoided.

Survey Shows Enfield Lacks Map Of Drainage Facilities

The Town of Enfield is currently engaged in a comprehensive sewer construction program which will ultimately provide service to the entire community. The construction program, which was initiated in 1965, is based upon a 1959 Master Plan which was updated in 1963 and revised in 1967 to provide for compliance with an order issued by the State Water Resources Commission. Old sewerage facilities have been rehabilitated; the waste water collection system has been extended and now serves over 14,000 Enfield residents; interim chlorination equipment has been installed at the community's primary treatment plant; and a secondary waste water treatment facility is currently under construction.

Tree Lighting Friday Night

The Greater Enfield Chamber of Commerce will again sponsor the annual Christmas Lighting program. The ceremony will take place at the Enfield Town Hall on Friday at 7:15 p.m.

This year, the Jaycee Wives will cooperate with the Chamber by sponsoring a Christmas Carol Sing-Along. The program will also include Mayor Frank Mancuso and a visit from Santa Claus and his helper.

Gay carol books for the Sing-Along will be distributed by the Jaycee Wives and there will be candy for the kiddies.

Co-chairmen for the Christmas Lighting Program are Vincent Ferrazzo of Vincent's Apparel and Al LaRussa from LaRussa's Appliance.

The general public is invited to attend.

As a result of the extension of the municipal sewer system, costs incurred by the town for the operation and maintenance of its sanitary and storm sewerage have risen from approximately \$36,000 in fiscal year 1966 to anticipated expenditures of approximately \$100,000 during the current fiscal year.

Capital expenditures made by the town for the installation of waste water collection facilities since the initiation of the comprehensive construction program in 1965 have amounted to approximately \$14.6 million. The cost of such sewer projects has been met through the use of long term bonds; and state and federal assistance programs and installation assessments serve as the major sources of revenue to cover debt retirement.

In addition, the costs incurred by the town for the rehabilitation of old sewerage facilities, the installation of interim chlorination equipment, and the construction of a secondary treatment facility amount to \$7.1 million. State and federal grants which will defray 85 per cent of these costs, or \$6,035,000, have been approved and thus reduce the town's share of the

costs of these projects to \$1,065,000. Future phasing of the sewer construction program will be based on need and upon the availability of state and/or federal assistance. It is clear, however that the continuation of the program will require large capital expenditure throughout the planning period.

Enfield's needs with regard to waste water treatment will be satisfied with the completion of the new secondary treatment plant in 1972. Funds will be required at that time, however, to meet the cost of operating the facility. Estimated annual operating and maintenance costs, on the basis of initial flows, will amount to \$196,000.

There are two problem areas related to storm drainage that require immediate attention by the town. An old partially combined sanitary and storm sewer system is presently in use in the Thompsonville Center area. The town is under order from the State Water Resources Commission to separate the combined sanitary and storm sewers and it is expected that such separation will be accomplished within the planning period.

Also, it is frequently the case that the drainage systems serving subdivisions become clogged and back up into homes, causing flooding and consequently posing a health hazard. The town is hampered in its attempts to correct such situations, because there is no index or map of existing drainage facilities. The lack of such an index, which would show the location of all underdrains and storm sewers, also causes difficulty when the town or private companies wish to install or repair other utility lines such as gas or sanitary sewers. A comprehensive master plan of the existing and proposed future storm sewer system in Enfield is an immediate need.

The inclement weather has virtually altered the town leaf collection program and it will be necessary to continue the collection in the area south of Freshwater Brook, west of 191 and north of Bridge Lane during the week of Nov. 23.

Also, with the Thanksgiving Holiday falling on Thursday, the Highway Dept. crew will not be working that day and the regular rubbish collection will be picked up one day later for the remainder of the week.

The Public Works Dept. reminds the public that the sanitary landfill at Town Farm Rd. will be closed on Thanksgiving Day but will remain open on Friday and Saturday from 8 a.m. to 4 p.m. and Sunday from 1 to 5 p.m.; thereafter, the schedule will remain on a 7-day basis.

Large branches and rubbish are not being collected by the town except in instances where town forces have removed a dead tree as part of the forestry program. It will be necessary for people to make private arrangements to have the bulk material removed to the landfill area.

Thompson is a graduate mechanical engineer from the State University of New York and has had a strong technical and administrative background in mechanical engineering. He was selected following an intensive recruitment program. His familiarity and experience with the machinery being installed at the plant was the deciding factor in Thompson's selection, concluded Mullins.

Thompson's ultimate position will be as head operator of the treatment facility when it is placed in operation in the fall of 1972.

costs of these projects to \$1,065,000.

Future phasing of the sewer construction program will be based on need and upon the availability of state and/or federal assistance. It is clear, however that the continuation of the program will require large capital expenditure throughout the planning period.

Enfield's needs with regard to waste water treatment will be satisfied with the completion of the new secondary treatment plant in 1972. Funds will be required at that time, however, to meet the cost of operating the facility. Estimated annual operating and maintenance costs, on the basis of initial flows, will amount to \$196,000.

There are two problem areas related to storm drainage that require immediate attention by the town. An old partially combined sanitary and storm sewer system is presently in use in the Thompsonville Center area. The town is under order from the State Water Resources Commission to separate the combined sanitary and storm sewers and it is expected that such separation will be accomplished within the planning period.

Also, it is frequently the case that the drainage systems serving subdivisions become clogged and back up into homes, causing flooding and consequently posing a health hazard. The town is hampered in its attempts to correct such situations, because there is no index or map of existing drainage facilities. The lack of such an index, which would show the location of all underdrains and storm sewers, also causes difficulty when the town or private companies wish to install or repair other utility lines such as gas or sanitary sewers. A comprehensive master plan of the existing and proposed future storm sewer system in Enfield is an immediate need.

The inclement weather has virtually altered the town leaf collection program and it will be necessary to continue the collection in the area south of Freshwater Brook, west of 191 and north of Bridge Lane during the week of Nov. 23.

Also, with the Thanksgiving Holiday falling on Thursday, the Highway Dept. crew will not be working that day and the regular rubbish collection will be picked up one day later for the remainder of the week.

The Public Works Dept. reminds the public that the sanitary landfill at Town Farm Rd. will be closed on Thanksgiving Day but will remain open on Friday and Saturday from 8 a.m. to 4 p.m. and Sunday from 1 to 5 p.m.; thereafter, the schedule will remain on a 7-day basis.

Large branches and rubbish are not being collected by the town except in instances where town forces have removed a dead tree as part of the forestry program. It will be necessary for people to make private arrangements to have the bulk material removed to the landfill area.

Thompson's ultimate position will be as head operator of the treatment facility when it is placed in operation in the fall of 1972.

Thompson is a graduate mechanical engineer from the State University of New York and has had a strong technical and administrative background in mechanical engineering. He was selected following an intensive recruitment program. His familiarity and experience with the machinery being installed at the plant was the deciding factor in Thompson's selection, concluded Mullins.

Thompson's ultimate position will be as head operator of the treatment facility when it is placed in operation in the fall of 1972.

Thompson is a graduate mechanical engineer from the State University of New York and has had a strong technical and administrative background in mechanical engineering. He was selected following an intensive recruitment program. His familiarity and experience with the machinery being installed at the plant was the deciding factor in Thompson's selection, concluded Mullins.

Thompson's ultimate position will be as head operator of the treatment facility when it is placed in operation in the fall of 1972.

Thompson is a graduate mechanical engineer from the State University of New York and has had a strong technical and administrative background in mechanical engineering. He was selected following an intensive recruitment program. His familiarity and experience with the machinery being installed at the plant was the deciding factor in Thompson's selection, concluded Mullins.



Underneath The Arches

The photo above was taken from under the Route 190 bridge crossing the Connecticut River between Enfield and Suffield. It was taken from the Suffield side looking east towards Enfield.



Publisher Honored

"Big Brother" Bob Kemp of 22 Meadowlark Rd. and "Little Brother" Timmy Hogan of 2 Dale Rd. present a Certificate of Appreciation to E. Payson Smith, Editor and Publisher of the Enfield Press for his sponsorship in local Big Brothers program.



Mr. and Mrs. Theodore Plamondon, Jr. of 109 South Rd., will observe their 25th Wedding Anniversary Thanksgiving Day. They were married Nov. 26, 1945, in St. Joseph's Church in Suffield. Mrs. Plamondon is the former Jennie Maleski of Suffield. They are the parents of two sons, John of Windsor Locks and Teddy III of Windsor.

Fermi HS Class Officers Elected

Class officers for Enrico Fermi High School were elected last week after a school wide debate in the auditorium. Members of the sophomore and junior classes listened to their respective candidates' speeches and then voted by ballot to elect the following students:

Officers for the class of 1972 are, pres., Robert DeRocher; vice-pres., Lynn St. John; secretary, Coleen Hayes; treasurer, Nancy Parsons and director of activities, Dody Masterson.

Officers for the class of 1973 are, pres., Don Sheak; vice-pres., Sue Moryto; secretary, Millisa Oase; treasurer, Phillis Bennici; director of activities, Cheryl Crowley and class historian, Laurie Dewey.

The class officers are now in the process of developing a student government for Fermi High School.

CHURCH SERVICES

ENFIELD

ENFIELD AMERICAN BAPTIST CHURCH
Post Office Road
Rev. Earl Mack, Interim Minister
9:45 a.m. Sunday School
11:00 a.m. Worship Service
7:00 p.m. Sr. Youth Fellowship

FIRST BAPTIST CHURCH
Brainard Road
Rev. George H. Halland, Pastor
11 a.m., morning worship; 5:45 p.m., Jr.-Sr. Hi. Youth, 6 p.m. Crusader Choir Practice (grades 3-8); 7 p.m., evening worship

Tuesday: 6:45 p.m. boys' AWANA program (grades 6-8).
Wednesday: 7:30 p.m., Bible study & prayer hour; 8:30 p.m., choir practice.
Thursday: 6:30 p.m., girls' AWANA program (grades 3-8).
Sunday: 9:45 a.m., Bible School;

FAITH BAPTIST CHURCH
Broad Brook Road
Rev. B. W. Sanders, Pastor
9:30 a.m. Sunday School
10:45 a.m. Worship
5:45 p.m. Fellowship Hour
7:00 p.m. Evening Service
Wednesday Prayer Meetings
11:00 a.m. and 7:30 p.m.

ST. ANDREW'S CHURCH (Episcopal)
28 Prospect Street
Rev. R. MacKaye Atwood, Rector
8:00 a.m. Holy Eucharist
10:00 a.m. Family Eucharist
10:00 a.m. Church School

ST. PATRICK ROMAN CATHOLIC CHURCH
Corner High and Pearl Streets
Co-Pastors:
Rev. John F. Tehan
Rev. Walter A. Vichas
Rev. Salvatore C. Pappandrea
Saturday Masses: 5:00 p. m. and 7:00 p. m.
Sunday Masses: 7:00, 8:15, 9:30, 11:00 a. m.
Weekday Masses: 7:30 and 8:15 a. m.

ST. NICHOLAS GREEK ORTHODOX CHURCH
Corner of Church and Chapel Sts.
Rev. Athanasios E. Chamberas
Priest
9:30 a.m. Orthros
10:30 a.m. Divine Liturgy
11:30 a.m. Sermon in Greek and English
10:15 a.m. to 11:30 a.m. Sunday School classes

ST. MARTHA ROMAN CATHOLIC CHURCH
224 Brainard Road
Rev. John B. O'Connell, Pastor
Sunday Masses: 7:30, 8:30, 9:45, 11:00 a.m., and 12:00 Noon.
Saturday Masses: 5 and 7:30 p.m.

HOLY FAMILY ROMAN CATHOLIC CHURCH
38 Simon Road
Rev. Francis T. Kerwan, Pastor
Sunday Masses: 7:30, 9, 10:15, 11:30 a.m., 5 p.m.
Saturday Masses: 5:00 and 7:30 p.m.
All weekday Masses through Saturday at 9 a.m. in the Chapel.

UNITED PRESBYTERIAN CHURCH
High Street
Rev. Dale Hunter, Pastor
10:45 a.m., Worship Service; 9:15 a.m., Sunday School (starting on Sept. 13).

ST. BERNARD ROMAN CATHOLIC CHURCH
426 Hazard Avenue, Hazardville
Rev. Patrick V. Fitzmaurice, Pastor
Sunday Masses: 7:45, 9:00, 10:15, 11:30 a.m. Saturday Mass: 5 p.m.
ST. JOHN'S EPISCOPAL CHURCH
Warehouse Point
Rev. John VanBredorode, Rector
8 a.m. Holy Communion
9:30 a.m. Family Service, Church School, Sermon 1st and 3rd Sundays: Holy Communion; 2nd, 4th and 5th: Morning Prayer.

SINAI TEMPLE
1100 Dickinson Street
Springfield, Mass.
Bernard M. Cohen, Rabbi
Sabbath Eve Services
Summer, Friday Eve: 7:30 p.m.
Remainder of Year: 8:15 p.m.
Sunday School Every Sunday
Sept. thru May: 9:30 to Noon
Activities for all members of the family.

ST. ADALBERT ROMAN CATHOLIC CHURCH
90 Alden Avenue
Rev. Paul J. Bartlewski, Pastor
Sunday Masses: 6:00, 7:30, 9:00, 10:15, 11:30 a.m. and 7:00 p.m.
Weekdays: Masses at 7:20 and 8:00 a.m.
Saturday: Mass at 9:30 a.m.
C.D. Classes.

FIRST PRESBYTERIAN CHURCH
Rev. Frank L. Hutchinson, Minister
1346 Old King Street
9:30 a.m. Sunday School
10:45 a.m. Morning Worship

ENFIELD CONGREGATIONAL CHURCH
1295 Enfield Street
Rev. Robert C. Lane, Minister
9:30 a.m. and 11:00 a.m. Morning Worship (nursery care available)
9:30 a.m. and 11:00 a.m. Church School
7:00 p.m. Senior High Youth Fellowship

UNITED METHODIST CHURCH OF ENFIELD
41 Brainard Road
10:00 a.m., Sunday Worship
10:00 a.m., Church School
Rev. Matt Mees, Minister

LUTHERAN CHURCH OF OUR REDEEMER
North and Maple Sts., Hazardville
Rev. George Luecke, Pastor
Sunday School 9:45 a.m.
Sunday Worship 11 a.m.
The Sacrament of Holy Communion is celebrated on the first Sunday each month.

ST. MARY'S EPISCOPAL CHURCH
383 Hazard Avenue, Hazardville
Rev. Edward W. Johnson, Rector
8:00 a.m. Holy Communion
9:00 a.m. Second and fourth Sundays, Holy Communion
10:30 a.m. First and third Sundays, Holy Communion.

HAZARDVILLE UNITED METHODIST CHURCH
330 Hazard Avenue, Hazardville
Rev. J. Arthur Dahlstrand, Minister
10:00 a.m. Worship Service
10:00 a.m. Church School

HOLY CROSS NATIONAL CATHOLIC CHURCH
723 Enfield Street (Route 5)
Rev. Stanley M. Loncola, Pastor
SUNDAY MASSES:
9:00 a.m. Choral Mass & Sermon
9:45 a.m. School of Christian Living, Coffee Hour.
10:30 a.m. High Mass
SATURDAY:
9:00 a.m. Youth Mass
9:45 a.m. Catechism Classes
11:30 a.m. Altar Boy Rehearsal
2:00 p.m. Confessions
Communion Every First Sunday.

GOLDEN TOUCH OF HOSPITALITY
BY JANE ASHLEY
Fruit Soup is Dessert
Popular in European countries, fruit soups are gaining in importance here in America. This recipe for cranberry fruit soup is so quick and easy, you can have a European dessert delicacy with a minimum of effort.

Quick Fruit Soup
2/3 cup sugar
1/4 cup corn starch
4 cups cranberry juice
1 (2-inch) cinnamon stick
Mix together sugar and corn starch in saucepan. Gradually stir in cranberry juice. Add cinnamon stick. Bring to full boil over medium heat, stirring constantly. Cover and simmer 5 minutes. Remove from heat. Discard cinnamon. Serve either warm or cold, topped with a dollop of dairy sour cream. Makes 8 (1/2-cup) servings.

OBITUARIES

Francis J. Middelaer Somers and Mrs. Jeanne Campbell of Birmingham, Ala., and several nieces and nephews. The funeral will be Friday from the State Street parlors of the T. P. Sampson Funeral Home at 8:00 a. m. followed by the Liturgy of the Christian Eucharist at Holy Name Church at 9:00 a. m. Burial will be in St. Michael's Cemetery. Calling hours will be Wednesday and Thursday afternoon and evening.

Best Selling Paperbacks

[As listed by the Enfield Book & Card Shop.]

FICTION

"Love Story," by Erich Segal
"Puppet on a Chain," by Alister MacLean
"Fame Game," by Rona Jaffe
"House on the Strand," by Rona Jaffe
"Thespass," by Fletcher Knebel

NON-FICTION

"Bobby Orr and the Big Bruins," by Stan Fischer
"Mannequin: My Life as a Model," by Carolyn Kenmore
"Understanding Human Sexual Inadequacy," Belliveau & Richter
"Selling of the President, 1968," by Joe McGinniss
"Prime Time," by Alexander Kendrick

HARD-COVER

"The Sensuous Woman," by "J"
"Up the Organization," by Robert Townsend
"Everything You Always Wanted To Know About Sex," by Dr. David Reuben
"Body Language," by Julius Fast
"Wartime Journals of Charles Lindbergh"

WEEKLY FIRE REPORT

Gary Pira

Enfield area firefighters responded to the following alarms during the past week:

November 17, 3:51 p.m. North Thompsonville firemen were called to extinguish burning leaves inside a storm sewer in front of 57 Varno Lane. The minor blaze was quickly contained, and no damage was incurred.

November 18, 11:07 a. m. A surge of water pressure was apparently the cause of an automatic protection device being activated at the new Stop & Shop Supermarket on King St.

The automatic alarm was connected to a Hartford firm that immediately notified local fire authorities. The company was not readily able to ascertain which Enfield Stop & Shop it was, so both the Enfield and North Thompsonville fire departments were dispatched.

Responding Enfield fire personnel checked the sprinkler system and found that a pressure by-pass valve had vented which activated the alarm. Firemen reset the device before returning to headquarters. 2:03 p. m. North Thompsonville firefighters were called to the Kentucky Roast Beef Restaurant, 397 Enfield St., when a short circuit developed in an electrical conduit. Damage was negligible, and an electrician was

called to correct the trouble. 8:06 p. m. Enfield firemen were dispatched to quell a pile of burning leaves on Hathaway Ave. The small fire was easily contained.

November 19, 4:05 p. m. Enfield firefighters were called to the James Leard residence, 33 Spier Ave., when a pressure cooker exploded. There were no injuries, nor any fire, and no damage outside of a spoiled supper.

As outside temperatures drop, indoor fire dangers rise! National Fire Protection Association records show that cold weather always brings an increase in destructive fires.

Heating systems are mainly to blame. When they're pushed weaknesses in the equipment or hard in the cold weather, any installation may show up with disastrous results.

Check and repair equipment in your home now, before the season's first cold snap. Check the chimney, too — a clean tight chimney means fuel saving as well as fire safety.

Above all, be sure that any fixed or portable room heaters are in first class operating condition. Dirty, defective ones can spell danger and disaster.

Remember: It's good to be warm, but essential to be safe.

92 FHS Students Take Field Trip

Recently a group of ninety-two juniors from Enrico Fermi High School travelled to Salem, Mass. This was an American Literature field trip. The students were chaperoned by two members of the English Department, Mrs. Janet Fox and Miss Rose Porcello, and a student teacher, Miss Paula Paulette.

While in Salem the students visited the famed House of Seven Gables. Here they saw the building behind Nathaniel Hawthorne's novel of the same name. They also toured the Custom House — one of Hawthorn's most valuable sources for background in his works.

They also visited the Witch House and the Salem Court House.

The students were able to see the historical background of the literature they are reading. The trip was not only an enjoyable experience but also a valuable learning experience.

SHOP FROM PRESS ADS

Keep Christmas going

with the gift that says something all year long.

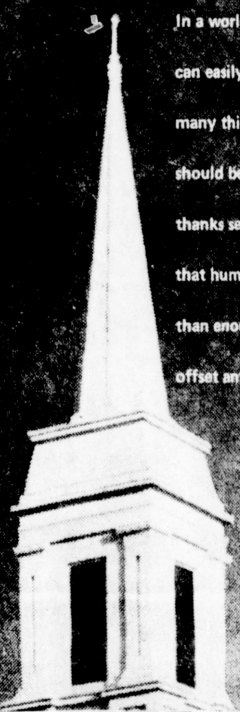


All telephones gift-wrapped and delivered free. To order, give one of our Christmas Belles a ring at your Phone Store listed in your directory.



Southern New England Telephone

In a world beset by problems, we can easily forget that there are still many things for which each of us should be grateful. May this day of thanks serve as a lasting reminder that humanity has been given more than enough divine blessings to offset any difficulty.



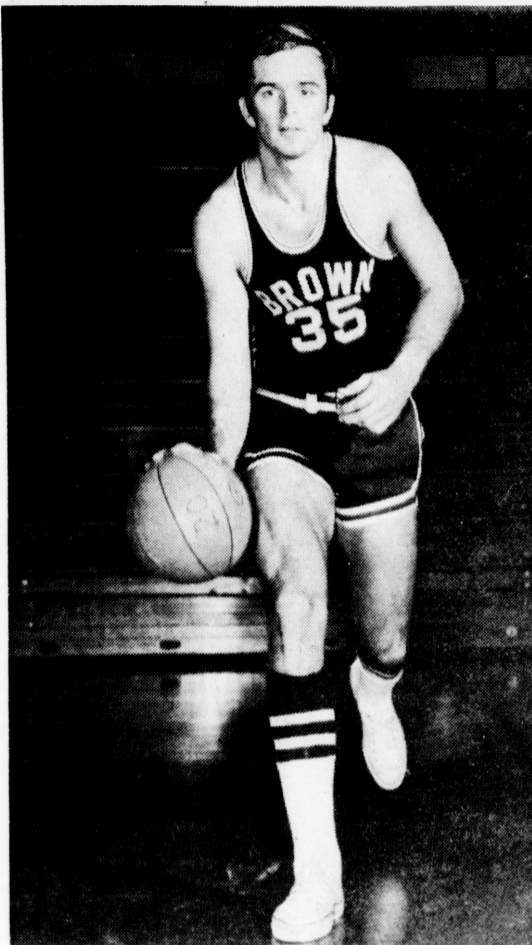
LEETE Funeral Home, Inc.
125 PEARL STREET - THOMPSONVILLE
745-3386

SOMERS Funeral Home
MAIN STREET - SOMERS
749-8413

WINDSOR LOCKS Funeral Home
441 SPRING STREET - 623-3487

SPORTS

Russ Tyler On Brown Univ. Varsity Basketball Team



Russ Tyler

Russ Tyler, former Enfield High standout, is rapidly approaching readiness for the opening of Brown University's varsity basketball season. Captain of the squad, the 6'3", 195-pound backcourt man was second on the team in scoring last season and is a fine outside shooter and defensive guard.

At Enfield High, Russ was captain of the football, basketball and baseball teams, and was all-league in all three. He

also holds the season and career scoring records in basketball. Russ comes from a sporting family. Brother Tom was a Holy Cross quarterback and played for Bridgeport and Quincy in the A.C.F.L. Brother John is president and general manager of the Kansas City Spurs in the American Professional Soccer League. An international relations major, he is the son of Mr. and Mrs. J. E. Tyler of 24 Franklin St.



Holy Family Golf League Winners

Trophies were recently presented at the 5th Annual Banquet at Cedar Knob to (l. to r.) Joseph Martin, 3rd place; Armand Collard, 1st place; Ronald Osborne, 1st place; Rev. Francis Kerwan, pastor of Holy Family Church; Marcel St. Sauveur, 2nd place; Anton Remenik, 2nd place; and Norman McDonald, 3rd place.

EHS Ends Season With 1-6-1 Record

The Enfield High football team battled Bulkeley High of Hartford to a 6-6 standstill in its final game of the season last Saturday at Hartford's Dillon Stadium. The underdog Raiders almost pulled the game out in the waning moments but had to settle for a tie. Enfield's record stands at 1-6-1 as compared to Bulkeley's 3-4-1 record.

Top ground gainer for the locals was hard running halfback Bobby Scavotto who picked up 125 yards on 19 carries. The first half indicated a defensive game as both teams held each other scoreless. Although each team made several big gains, no one was able to cross the goal line.

Enfield fumbled twice during the first half but were aided by Mike Pieper's fumble recovery and key interceptions by Steve Dewey and Bill Landry. An Enfield drive was halted on the Bulkeley 16 as the half ended.

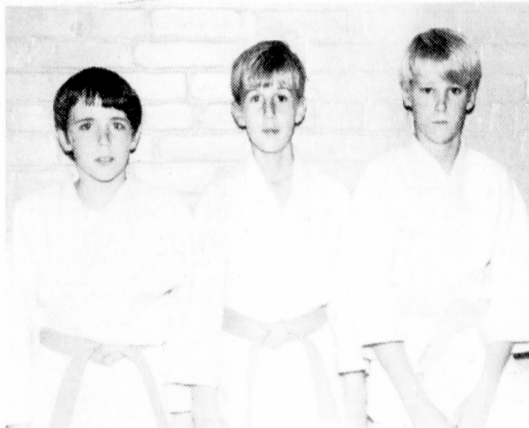
Bulkeley received the kick to start the second half and moved 75 yards on a sustained drive with quarterback Randy McKenney sneaking in for the initial tally. The point-after was halted and it was 6-0, Bulkeley.

Enfield came right back and moved the ball down to the Bulkeley three-yard line. The big gainer was Bob Scavotto's 54-yard burst off-tackle. With just a minute gone in the fourth quarter quarterback Kevin Mayo scored from the three. The point-after failed and it was Enfield 6, Bulkeley 6.

Enfield's defense, outstanding all afternoon, was particularly tough in the final period.

The Raiders, behind the fine running of Scavotto and Dave Dickinson, almost pulled the game out in the final moments. With just a few seconds showing on the clock Mayo uncorked a nice pass to Walt Kukulka, who raced down to the Bulkeley 10 yard line as time ran out.

-W. S.



Representing the Enfield Judo Club in the Willimantic YMCA invitational Judo tourney were L-R, Jim Murray, 5 Douglas Drive, Kevin Samuels, 19 Drummond Road, and Bruce Strom, 15 Marion Place, all of Enfield. These three will be a part of the 15 man team representing Enfield in Westfield, Thanksgiving weekend.

Local Judo Club To Compete In Westfield Tournament

The Enfield Judo Club will send a fifteen-man team to compete in the Westfield, Mass. Invitational Junior Judo Tournament this Saturday.

Representing the Enfield Club will be John Murray, James Murray, Bruce Strom, Kevin Samuels, Michael Reardon, Timothy Reardon, Herbert Paulman, Scott Merrill, Mark Marinaccio, Kevin Kelsey, Michael Jazminski, T. R. Goodman, Michael Dobosz, Gregory Dobosz, Kevin Baccoccio and Jerry Barr.

In the past weeks Enfield has been represented in Junior tournaments in Waterbury and Willimantic and on Dec. 8 will be competing in a dual match at the New Britain YMCA.

Last year the Westfield tournament drew over 200 entries from all over New England. The tournament is sanctioned by the Amateur Athletic Union and the United States Judo Federation and is open to players under sixteen years of age, it will be held at Westfield Junior High School.

The Enfield Judo Club has classes for juniors on Friday evening at 7:30 and on Saturdays at 1:30 at 856 Thompsonville Road in Suffield. Information on joining the club may be obtained from Ken Washburn at either 623-6582 or 623-0635.

Basketball

JUNIOR LEAGUE

	W	L
Celtics	2	0
Knicks	1	1
Bullets	1	1
Lakers	0	2

Player of the week: Dave Kershner of Knicks.
Celtics 28, Bullets 10
Knicks 18, Lakers 10

INTERMEDIATE LEAGUE

	W	L
Pistons	2	0
Bucks	1	1
Suns	1	1
Royals	0	2

Player of the week: Nick Smith of Pistons.
Bucks 25, Royals 18
Pistons 40, Suns 24

SENIOR LEAGUE

	W	L
Globetrotters	2	0
Pilots	2	0
Chargers	0	2
Magicians	0	2

Player of the week: Jim LaPointe of Globetrotters.
Pilots 62, Chargers 38
Globetrotters 47, Magicians 14

Shop From Press Ads

McDonnell To Get Fishing Trophy

James J. McDonnell, III, of Hemlock Circle, Somers, won the Junior Division of the Grouper Classification in the Pompano Beach, Fla., Summer Fishing Tournament with a 32-pounder he caught last June while fishing from the Helen S. James will receive a plaque from the Greater Pompano Beach Chamber of Commerce for his catch.

When the U. S. Supersonic Transport flies over the ocean it will create a sonic boom having a nominal overpressure of 2 1/2 pounds per square foot at sea level. The weight of this overpressure is equal to that imposed by a three-foot wave.



Canadian Skating Champ, Star of the Ice Capades, Linda Carbonetto, Paul Rogers, George Sheehy, Spring-Matic Industries, President, Tony Zorzi, Stop & Shop Manager, Enfield.

Local Man Winner Of Ice Capades Contest

The winner of the Ice Capades Stop & Shop Contest major prize of a living room suite was selected by one of the stars of the Ice Capades, Miss Linda Carbonetto, Canadian Champ, just before intermission at the opening night performance. All 12 Stop & Shop stores in the Western Mass. and Southern Connecticut area participated in the Ice Capades contest.

Canadian Champ Miss Carbonetto has just handed the name of Mrs. Bernice Rukas of 8 Gordon Ave., Enfield, to Paul

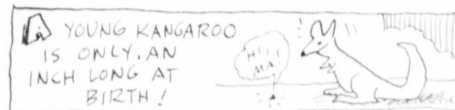
Rogers, as the winner of the Spring-Matic living room suite. George Sheehy, president of Spring-Matic Industries, is next to Rogers and at the extreme right is Tony Zorzi, Stop & Shop manager of one of the Enfield Stores.

Winners of the Ice Capades contest were guests of the Stop & Shop, opening night and each store awarded third prizes of dinners for two at any of the Huke Lau restaurants in Longmeadow, Chicopee or Lenox, Mass.



Bags Deer

John Giachello of 2 Poplar St., Enfield, went hunting in Maine and got a 200-lb., 4 point buck. Posing with the deer are his children (left to right) Dean, John and Tina.



THINK SMALL 1971 Volkswagen Beetle \$188950
Del. in Windsor
Equipped with leatherette interior, windshield washer, 3-speed electric wipers, heater, defroster, 4-way safety flashers, back-up lights, seat belts front & rear, Flow Through Ventilation.

GEORGE WOLF, INC.
9 WINDSOR AVE. WINDSOR, CONN. 247-3285
ON ROUTE 3A BETWEEN CARVILLE'S AND FORMER FULLER BRUSH 1/2 Miles From Downtown Hartford

BALCH OF EAST WINDSOR
Thanksgiving Days
PARTIAL LISTING OF
OVER **300** CARS
SELECT FOR SHOWROOM FRESHNESS

FREE SNOW TIRES*

70 BUICK Skylark 2-Dr. HT, V-8, auto, PS.
70 BUICK Electra 3-Dr. HT, full power, air cond.
70 PONT. Firebird 2-Dr. HT, V-8, auto, PS, PB, air conditioning.
70 PONT. Catalina 4-Dr. HT, V-8, auto, PS, PB.
70 PONT. Catalina 4-Dr. HT, V-8, auto, PS, PB, air conditioning.
70 PONT. Grand Prix, full power, air conditioning.
70 CHEV. Monte Carlo 2-Dr. HT, full power, air conditioning.
70 OPEL Kadett Wagon, 4-cylinder, automatic.
70 PLYM. Fury III 4-Dr. HT, full power, air cond.
70 OPEL Kadett 3-Dr. Sedan, 4 cyl., 4-speed.
69 PONT. Bonneville 3-Dr. HT, V-8, auto, PS.
69 PONT. Catalina 4-Dr. Sedan, V-8, auto, air cond. (two).
69 PONT. Grand Prix, full power, air cond. (two).
69 BUICK LeSabre 4-Dr. Sedan, V-8, auto, PS, PB.
69 BUICK Electra 3-Dr. HT, V-8, auto, PS, PB.
69 OPEL Kadett 3-Dr. Sedan, choice of 3, 4-cyl., 4-speed.
68 BUICK Wildcat 3-Dr. Wagon, V-8, auto, PS.
68 TEMP. 2-Dr. Sedan, V-8, automatic, PS.
69 PLYM. Fury III 3-Dr. Wagon, V-8, auto, PS.
68 VOLVO 4-Dr. Sedan, 4-cyl., 4-speed.
68 FORD Torino Wagon, V-8, auto, PS.
67 FORD Mustang conv., V-8, automatic.
67 CADIL. DeVille 3-Dr. HT, V-8, auto, PS.
67 JAG'R XKE roadster, fully equipped.
67 VETTE Sting Ray conv., V-8, 4 speed.
67 PONT. Catalina wagon, V-8, auto, PS, PB, air cond.

*Your Choice of Any of the Above FREE GIVE-AWAYS with the Purchase of Any Pre-owned Car through Nov. 25th!

FAMOUS FOR PRICES
PONTIAC-BUICK
OPEL-GMAC-MIC
Rt. 5, E. Windsor 289-4483

THINK BIG \$293650
1971 VOLKSWAGEN
MOD. 2211 STATION WAGON
Seat belts, 4-way, flasher, outside mirrors, opening windows, windshield washer, 3-speed electric wipers, padded visors, back-up lights, Rear window defogger.

GEORGE WOLF INC.
9 WINDSOR AVE. WINDSOR, CONN. 247-3285
ON ROUTE 3A BETWEEN CARVILLE'S AND FORMER FULLER BRUSH 1/2 Miles From Downtown Hartford

Quality USED CARS

1967 Pontiac Catalina 4-Dr. Sedan, Gold, V-8, R&H, PS, AT. **\$1695**

1967 Ford Falcon 4-Dr. Sedan, White, 6 Cyl. R&H, PS, AT. **\$1195**

1967 Chevrolet Caprice 2-Dr. Hard Top, Yellow, V-8, R&H, PS, AT. **\$1795**

1968 Ford Galaxie 500 4-Dr. Hard Top, Blue, V-8, R&H, PS, AT. **\$1795**

WE BUY USED CARS
TROIANO
AUTO SALES INC.
Open Daily 9-9 - Sat. 9-6
745-7136
600 ENFIELD ST. THOMPSONVILLE

TOLLE MOTORS

DEPENDABLE USED CARS and QUALITY BODY SHOP
North Road, Warehouse Point (Next to Bassdale Plaza) 623-5833

NEW COMPLETE BODY SHOP
Call 623-8877
Free Estimates ask for GEORGE GALLIAN

1970 CUTLASS SX 2-DR. H'TOP V-8, Auto, PS, Super Fast.
1969 CADILLAC COUPE DeVILLE V-8, Full Power, Air, Loaded.
1968 IMPALA 4-DOOR HARDTOP V-8, Auto, PS, A-C, Clean.
1968 IMPALA CONVERTIBLE V-8, Automatic, PS.
1968 IMPALA 2-DOOR HARDTOP V-8, Auto, PS, Clean.
1968 T-BIRD 4 DR. LANDAU Full Power, Air Cond., Mint
1968 GALAXIE 500 4-DR. SEDAN V-8, Automatic, PS.
1968 MERCEDES 200-D SEDAN Diesel, 4 Speed, Immaculate.
1967 CAPRICE WAGON V-8, Heater, Radio, PS, PB, Rack, Auto.
1967 TEMPEST 2-DOOR HARDTOP V-8, Auto, Radio, A/C.
1967 COUNTRY SQUIRE WAGON V-8, Auto, PS, Clean.
1967 AUSTIN HEALY SPRITE 4 Cyl., Heat, 4 Speed, Clean.
1967 MALIBU 2-DOOR HARDTOP 8 Cyl., Auto, Radio, x cond.
1967 TEMPEST 4-DOOR HARDTOP 6 Cyl., Heat, Radio, Auto, PS.
1967 SUNBEAM ALPINE CONV 4 Cyl., Heat, Radio, 4 Speed.
1967 IMPALA 2-DOOR HARDTOP 6 Cyl., Auto, Radio, PS.
1966 PONTIAC TEMPEST WAG. V-8, Auto, PS, Radio, Clean.

E-Z TERMS
BANK FINANCING

WE SELL WORLD'S SMALLEST SNOWMOBILE
4 cycle engine, very quiet, up to 30 mph.
lay away plan or complete financing no money down Start at \$375 up

1965 FORD CUSTOM 2-DOOR 6 Cyl., Heater, Radio, Stan Tran.
1965 IMPALA 2-DOOR HARDTOP V-8, Heater, Radio, Auto, PS, PB.
1965 MALIBU "SS" HARDTOP 6 Cyl., Auto, Radio, Whitewalls.
1965 VOLKSWAGON BUG 4-Cyl., 4-Speed, Economy.
1965 CUTLASS 2-DR. HARDTOP V-8, Auto, PS, PB, Sharp.
1964 CHEV. BELAIR WAGON V-8, Radio, Auto, X-Condition.
1959 MERCEDES 300 SL COUPE Superior Condition. A Classic!

WE BUY & SELL - OR - TRADE YOU DOWN We Take Anything In Trade

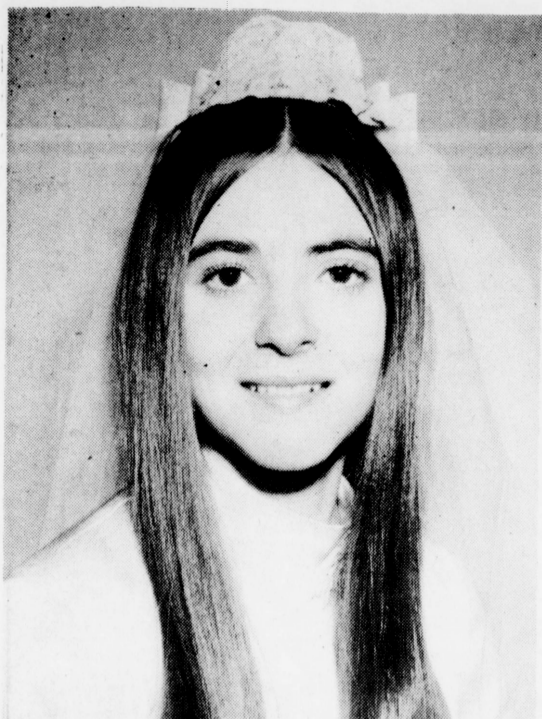
- OVER 50 CARS -

1970 CHEV. FLEET. PICK-UP V-8, 4 Wheel Drive, 4-Speed.

Main St., Broad Brook (Next to Broad Brook Opera House) 623-5833 "40 YEARS OF REPAIRS" - Large Stock of Tires and Parts -

TOLLE MOTORS





D'Aleo-Buckley

Miss Cheryl Ann D'Aleo and John J. Buckley were married Saturday at St. Patrick Church. Mrs. Buckley is the daughter of Mr. and Mrs. Francis D'Aleo, of 724 Enfield St.; John Buckley is the son of Mr. and Mrs. John Buckley of 30 Winding Lane. The Rev. John F. Tehan officiated at the High Mass.

Given in marriage by her father, the bride wore a gown of imported Dutch satin featuring a bodice of Italian lace accented with similar appliques on the front of the skirt and on the cathedral length train. Her shoulder length veil of French illusion was caught in a crown of Italian lace and trimmed with pearls. The bride carried a lover's knot of orange delight roses, stephanotis and gold grapes.

The maid of honor was the bride's sister, Miss Susan D'Aleo; the bridesmaids included: Miss Kathy Buckley, Mrs. Barbara O'Brien, Miss Jane Sang-er, and Miss Marilyn Turbak.

The flower girl was Miss Claire D'Aleo, sister of the bride. All were similarly attired in brown tulle crepe pants dresses with stand-up collars and long sleeves accented with gold braid and complemented with brown sashes at the waist. They carried colonial bouquets of fall flowers, both dried and fresh with green grapes.

The best man was Jack Triolo; the ushers included: Robert Chadd, Robert Frank, Ed O'Brien, and Martin Smith. The ringbearer was Kevin McMahon, cousin of the bride.

A reception was held at the Storwton Stage Coach Barn, in West Springfield.

Following a wedding trip to the Poconos, the couple will reside in Staten Island, New York. Mrs. Buckley is a student at Wagner College; John Buckley is serving with the U.S. Coast Guard on Governor's Island, New York.

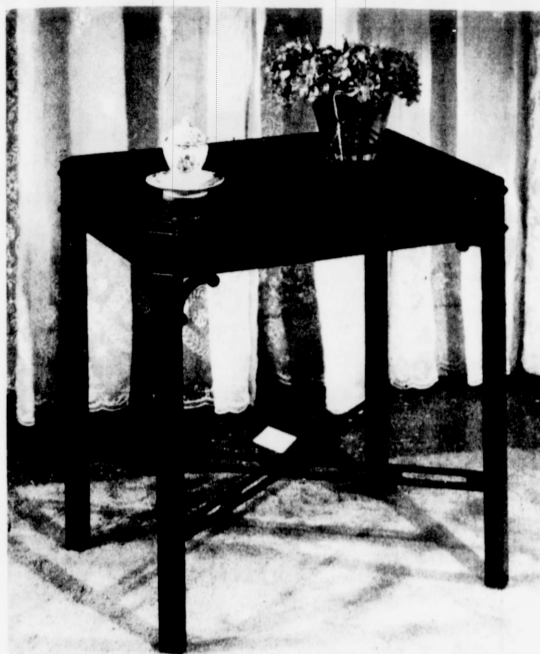


Schenk-Kurley

Mr. and Mrs. Frank X. Schenk of 2700 Millersport Highway, Getzville, New York, announce the engagement of their daughter, Diane Marie, to Capt. Joseph Kurley, son of Mr. and Mrs. Joseph Kurley of Enfield. Miss Schenk is a graduate of the New York State University

College for Teachers at Buffalo. She is currently teaching with the Department of Defense in the Mannheim, Germany area. Capt. Kurley is presently serving with the 56th Aviation Detachment in Germany. A December wedding is being planned.

Home Furnishing Facts: The Chippendale Style



Did you know that at the time of his first impetus as designer, Thomas Chippendale used the furniture that was popular at the time, added many striking innovations, and creating a new style that has been popular in Europe and America during every generation since that time? He was not a ruler, nor a wealthy man at the time that his cabinet shop began to alter the designs that prevailed during the middle of the 18th century.

In the first edition of his "Gentleman's and Cabinetmaker's Directory," Thomas Chippendale's design expressed classical French Louis XV, Chinese and even Gothic ornament in extraordinary harmony and well balanced design. He worked almost exclusively in mahogany, a wood that lent itself easily to precise and complicated carving.

After 1765 Thomas Chippendale made a few pieces of furniture in satin rose wood and other exotic woods that had been imported from the Orient. He painted a few, gilded and "japanned" others.

Although all types of furniture were affected, the characteristics of Chippendale's style are best seen in his chairs. During the early Chippendale period, the chair, stool and "chairback" sofa, were quite similar to the earlier Queen Anne and Georgian style pieces. The cabriole leg was featured and a more elaborate chair back appeared.

Later Gothic tracery, Chinese latticework, bamboo forms, ribbons and Rococo motifs borrowed from Louis XV furniture were prevalent in the carving and decoration on Chippendale's designs. Although these forms appeared to be a little irregular, and less unified than their ancestors, they were still overwhelmingly popular in England and adapted into the American designs. They were also copied throughout Great Britain and appeared in rough form in the cabinet shops of Scotland and Ireland.

Today the signed Chippendale style cabinets and chair produced in Scotland are as valued on antique markets almost as high as the English pieces. The American "cousins" of the Chippendale style, the Goddard pieces, produced by craftsmen in Newport, are similarly valued. Often a particular Scottish or American piece will command a higher price if its comparison design and quality is more select.

Today's reproductions of Chippendale pieces are readily available today and can be easily mixed with almost all types of English, French and American furniture. There are exceptions, to be sure, but generally the effect is most satisfying and a welcome addition to any scheme and coloring. The graceful and pleasing designs of the Chippendale style should be allowed to retain their own identity and not be overshadowed by too much bold color or large busy patterns in the upholstery material of the surrounding decoration of the room.



The Rev. Wayne James, and family

The Rev. James Guest Speaker

Faith Baptist Church, Broad Brook Road, Hazardville, announces its Third Annual Faith Promise Missions Conference to be held on Nov. 29 at 10:45 a.m. and 7 p.m. Rev. Wayne James, missionary in Milltown, New Brunswick, will be the guest speaker in both services. Mr. James has had a very effective ministry in Canada, opening several closed churches and is presently involved in a building program for his growing congregation to have a new church

building. The congregation of Faith Baptist Church has set a goal for missions over the next 12 months. This goal, referred to as a Faith Promise Offering, is in the amount of \$15,000. Last year's Faith Promise Offering was \$12,950. This money is given by the congregation above their regular contributions and is used for Home Mission projects and Foreign Missions, involving several foreign countries.

Stork News

Manchester Hospital
A daughter was born to Mr. and Mrs. Lauren Louis (Beverly Sanderson), of Vernon, on Nov. 16.

St. Francis Hospital
A daughter was born to Mr. and Mrs. Daniel Granahan (Lesley Hemphill), of 27 St. Thomas St., on Nov. 9.

A son was born to Mr. and Mrs. Mario Quaglini (Patricia Hannigan), of 66 Heron Road, on Nov. 10.

A son was born to Mr. and Mrs. Ralph O'Connell (Dorothy Himes), of 150 Spring Street, on Nov. 11.

A daughter was born to Mr. and Mrs. David O'Neil (Marna Lechowicz), of 254 Pearl Street, on Nov. 12.

A daughter was born to Mr. and Mrs. Francis Romano (Pearl Desrosier), of 11 Morgan Place on Nov. 12.

A son was born to Mr. and Mrs. John Riley (Linda Bourgeois), of 4 School Court, on Nov. 14.

A daughter was born to Mr. and Mrs. Philip Dumais (Susan Healy), of 25 Cora St., on Nov. 15.

A daughter was born to Mr. and Mrs. Joseph Gallagher (Caroline Clark), of 225 Tolland St., also on Nov. 15.

A daughter was born to Mr. and Mrs. Robert Hall (Shirley Harmon), of 184 Woodlawn Cir., on Nov. 15.

Again on Nov. 15, a son was born to Mr. and Mrs. Lawrence Studdiford (Carol Plant), of 189 Abbe Road.

A son was born to Mr. and Mrs. Gerard Gonyea (Arlene Clapp), of 34 Tyler Road, on Nov. 17.

D'Aleo's Celebrate 25th Anniversary

Mr. and Mrs. William J. D'Aleo of 3 Sunset Drive, Enfield, are pleased to announce they will be celebrating their 25th wedding anniversary on Nov. 24. An open house will be held by them on Sunday, Nov. 29.

Relatives and friends are welcome to visit between 2 and 6 p.m. Mrs. D'Aleo is the former Ann Harrasuk of West Suffield.

Girl Scouting

Marion Brodman 745-3921



Color, size, and proportion all must be kept in mind. Choose colors that will complement the colors and textures of the various foods that will be served. The color and design of the tablecloth, napkins, china and the candlesticks should also be kept in mind. A floral tablecloth should be accented with an arrangement of the same color flowers and a similar feeling of scale in the bouquet, i.e., small nosegays should not be overwhelmed by a massive bouquet, a multicolored cloth should be toned down with a simple graceful design of similar colors.

With so many different materials available for making arrangements, be careful to only use three or four of these differing size and shapes in the floral design. In the bouquet pictured above, the paper roses

The Biggest Little Bazaar

Come one, come all to the Brainard School on Wednesday, Dec. 2, starting at 4:45 p.m., the Brainard PTA is having another unique Christmas Bazaar. Remember all those lovely and useful items that were on sale last year? This year the selection is even larger.

There are at least 100 different items for stuffing stockings, wearing and eating. In addition there are many beautiful Christmas wreaths and tree ornaments. The wearing apparel items include slippers, crocheted vests, and knitted outfits for fashionable "Barbie" dolls. The ever popular pine cone tree ornaments and net Christmas trees will again be featured.

has decided to "adopt" a G.I. in Vietnam. The young man, who has no family of his own, will receive cards, etc., on a year round basis from the little Brownies in his home town.

Junior Troop 14, went hiking on Silkstone Mountain in Somers with the help of Mrs. Van Order and leaders, Mmes. Crowell, Sidway and Gates.

On Sunday, Nov. 22, Troop 14 held a Rededication Ceremony. Brainard Brownie Troop 947, with leaders Mmes. Symons and Markert, went to the Indian Museum in Somers on Nov. 17. The trip proved to be educa-

in addition there will be a special children's corner with special prices for a youngster's pint-size budget.

This year the baked goods corner will be staffed by members of the South School PTA. This will be the first fund raising project by the South School PTA. All proceeds from the baked goods will go to the South School PTA fund.

There is sure to be something at the Brainard School PTA Christmas Bazaar for each and every holiday shopper. Stop in at the all purpose room at the Brainard School starting at 4:45 p.m. The public is cordially invited.

tional as well as entertaining. The most popular Indian made articles purchased by the girls were: Teepees, Indian pencil cases and rings.

Troop 947 held a special Investiture to welcome Colleen O'Keefe into Brownie Scouting. Seven girls were made Brownie Scouts at an Investiture Ceremony held by Brownie Troop 580, Riverview. The new scouts are Sandra Albetzki, Janet Ciemiowski, Ruth Ann Donaldson, Brigitt Jandreau, Karen Linehan, Susan Silvestri and Cynthia Smith.

Happy Thanksgiving!

School Menus

Enfield School Menu

Monday: Meat patty with gravy, mashed potato, fresh spinach, bread and butter, milk, beef vegetable soup.

Cold Plate: Sliced ham with lettuce, cream cheese on date nut bread, potato chips, cabbage and tomato salad, fruit cup with cake, milk.

Dessert: Maple walnut cake with frosting, vanilla pudding with whipped topping, apple crisp.

Tuesday: Baked macaroni with tomato and cheese, green beans, roll with butter, milk, minestrone soup.

Cold Plate: Chicken and celery, American cheese and bacon, potato chips, fruit salad with dressing, golden spice cake with frosting.

Dessert: Golden spice cake with frosting, congo bar, cherry cobbler with sauce.

Wednesday: Meat loaf with gravy, mashed potato, sliced carrots, bread and butter, milk, chicken gumbo soup.

Cold Plate: Chopped ham and pickle, egg salad roll, tomato, escarole and endive salad, chocolate pudding with whipped topping, milk.

Dessert: Cherry marble cake with frosting, chocolate pudding with topping, strawberry chiffon tart.

Thursday: Turkey in gravy, mashed potato or Spanish rice, whole kernel corn, bread and butter, milk, vegetable soup.

Cold Plate: Sliced salami with lettuce, peanut butter and jelly or cheese, potato chips, celery and carrot sticks, fruit cup with cookie, milk.



AN IDEAL GIFT For

- Serviceman
- Student
- Friend
- Family Member

Let an EXPERT handle it!

ENFIELD AUTOMATIC TRANSMISSION

specializing in COMPLETE AUTOMATIC & STANDARD Transmission Service

917 Enfield St., Thompsonville
At The Rear 745-1123

NOW IS THE TIME... TO ORDER YOUR CHRISTMAS GIFT SUBSCRIPTION TO THE **Enfield PRESS**

SUCCESSOR TO THE THOMPSONVILLE PRESS

(A Gift To Be Enjoyed All Year Long)

Order Your Gift Subscription NOW And We Will Send A Gift Card For You...

PLEASE ENTER MY SUBSCRIPTION TO THE ENFIELD PRESS

71 CHURCH STREET ENFIELD, CONNECTICUT 06082

Name.....
Street.....
City..... Zip.....
(check enclosed) one year two year
RATES Inside Connecticut \$5.75 \$10.00
Outside Connecticut \$6.75 \$12.00
Student, Serviceman \$4.25

Brownie Troop 380 visited the Enfield Press this week with leader, Mrs. Surdam.

The troop, which is led by Mrs. John Crawford and assisted by Mrs. Frederick Tarbox,

Holiday Handicrafts



Combine some uncooked macaroni products and a few cans of spray enamels with a little imagination for a glamorous white Christmas wreath.

It's time to look over your Christmas decorations and plan the new additions you'll make this year. A new innovation is a lovely white wreath you can make yourself with macaroni products.

All you need for creating this unique ornament is a few cans of spray enamels, some uncooked macaroni products and a little imagination.

Follow these easy directions for a wreath that is certain to be a conversation piece:

Out of regular corrugated cardboard, or other similar material, cut four rings, each one successively narrower. The following suggested sized rings provide a well-balanced wreath:

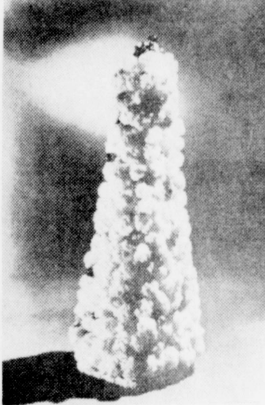
	Outside Diameter	Inside Diameter
1st ring	14"	9"
2nd ring	13½"	9½"
3rd ring	13"	10"
4th ring	12½"	10½"

Glue or staple ring two upon base ring one, then ring three upon two, and ring four upon ring three. Cover with linoleum paste. (If to be used for outdoor display, use a waterproof linoleum paste). Build wreath with a variety of macaroni pieces to a thickness of an inch at the center and a half-inch at the edge.

Spray the entire wreath with white enamel.

Add ribbon bows and colored balls for a festive touch.

Don't stop with a wreath now that you've discovered how fun and easy it is. Delightful tree ornaments may be made by cutting out pendant shapes from posterboard and spraying with dull black or white enamel. Then glue golden macaroni pieces, previously sprayed in the bottom of a large pan, to the pendants with transparent drying glue.



"In The Pink"

Be "in the pink" (or blue, or gold, if you prefer) for Christmas. This fluffly pink tree belongs in the Snow Queen's garden on your holiday table.

The Rev. Edmund Nadolny, Speaker

The Rev. Edmund Nadolny, Director of the Office of Communications for the Archdiocese of Hartford, will be the guest speaker at the Dec. 1 meeting of the Combined Women's Society of Christian Service. This meeting will be held at the Hazardville United Methodist Church and will begin with a potluck supper at 6:30. All the members are invited to bring their husband or a guest.

Fr. Nadolny undertakes many broadcasting ventures both on radio and TV, such as the radio show "Thoughts from Times," in which he takes three or four current top pop recordings and comments on them. He also brings the messages of the Gospel in present day context to the Youth of Connecticut. An-

other such undertaking is the program "We Believe." The talent for this show comes from news, films, local stations and the church. A local group that has performed on his show are the St. Alphonsus Seminars from Suffield. Fr. Nadolny believes you can find God's presence in life, wherever you look for Him, not just in church, and uses these means to communicate this.

There will be taken at this meeting, a White Christmas Offering which will go to Bill and Dot Anderson for their work in Mosambique, South East Africa. Also do not forget to bring your macaroni cookies for the inmates at Somers Correctional Institution.



Needle Mittens

All join hands for winter funds. A romp in the snow a figure eight on ice — don't leave your hands out in the cold. A family of mittens keeps little hands and big ones warm. These mittens are knitted on double pointed needles, using wolly worsted yarn. It only takes a little bit of yarn: two ounces for sizes 4½ to 5½, three for 6 to 8, four for 8 to 9. The mittens have snug ribbed cuffs and a braided cable stripe. For free instructions send a self-addressed stamped envelope, to the social editor of the Enfield Press along with your request for leaflet A-326.

Julius Caesar Re-enacted Today

The play "Julius Caesar" was presented today, Nov. 25, in the A. D. Higgins School auditorium under the direction of Miss Christine Zacarian, grade six teacher.

The cast included: Julius Caesar, Steven Shepley; Mark Antony, John Alexander; Brutus, Joseph Polaski; Cassius, Janet Baule; Casca, David VanDyke; Portia, Karen Dion; and Calpurnia, Elizabeth S. George.

The committee chairman included: scenery, Jina Shattuck; costumes, Alyson Wilcox; invitations and programs, Missy Baker; refreshments, Wayne Karez; and publicity, Joseph Polaski and Steve Shepley.

Around The World In Song Dec. 20th

This year's Enfield Choral Society Christmas Concert will take its audience around the world in song, Sunday, Dec. 20, at 8 p.m. at the Thaddeus Kosciuszko Jr. High School auditorium.

Under the direction of Josef Treggor, the chorus will use musical sounds of many countries to provide an unforgettable itinerary are the Germany and Japan of James Burden's "Festive Halls of Christmas," Russia's "Carol of the Russian Children," England's carols, "As It Fell Upon a Night," and "Tomorrow Shall be My Dancing Day," France's "Carol of the Birds" by Nove Cain, and finally selections from Amahl and the Night Visitors by Italy's Gian-Carlo Menotti.

Featured in the performance will be soloists, Edith Bradish and Ellen Hoffman, sopranos; Walter Rawson, tenor; Eliot McIssac, baritone; Josef Treggor, bass; and organist, Beryl Comparetto.

Reserve your seat now for the tour by purchasing a ticket from any Enfield Choral Society member or by calling Mrs. David Burg, 49-8828. Tickets are \$2.00 for adults and \$1.00 for students.

Disney Films For Children on Friday

Walt Disney's "The Misadventures of Merlin Jones," and a Disney Christmas cartoon, "Once Upon A Wintertime" will be presented Friday, 1:30 to 3:30 p.m., at the Holy Family Church hall.

Sponsored by the Holy Family Men's Club a donation of 50 cents is the admission.

Golf Mitts

Your clubs are begging for protection. This set of mittens will cover them brightly, in season or out. A lady who knits will want to make a set for a man who plays golf. If you don't know how to knit these mitts are season enough to learn before Christmas! They are quite easy to do, working ribbing for the cuffs and the stockinets stitch for the top. The numbers are crocheted cotton chains, stitched on the mitts in numerical order. Free instructions are available by sending a self-addressed stamped envelope to the social editor of the Enfield Press along with your request for leaflet PPE 1295.



Father-Daughter Weekend Held

Some 250 fathers from a dozen states were on the Salve Regina College campus the weekend of Nov. 7-8 for the 9th annual Father-Daughter Weekend of the women's college. On hand for the weekend were Andrew H. Bellida, 30 Raffia Rd., Enfield, whose daughter Dale Ann, is a junior at Salve Regina; Earle F. Hannum, 16 Cooper Drive, Enfield, whose daughter Gloria, is a freshman; David H. Mills, 8 East St., Suffield, whose daughter Sharon, is a freshman; and Harold A. Rock, Grist Mill Terrace, Somers, whose daughter Laurel, is a sophomore.

The visiting Dads joined their daughters in a round of activities including tours, receptions, classroom visitation, speeches, an annual business meeting, dinner, dance and a guitar Mass.

A focal point of the traditional weekend, sponsored by the Salve Regina Fathers Council, was "A Kaleidoscope of Learning," a series of special presentations by several of the College's academic departments, admissions office, and Christian Life Center.

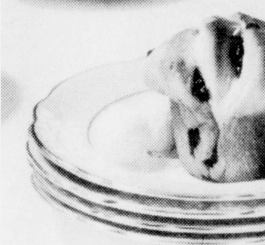
Another highlight was a Dads and Daughters Dance in the fabled Great Hall of Ochre Court, Salve Regina's original building on the Cliff Walk above the Atlantic Ocean.

Among the fathers in attendance was Dr. Rupert Von Trapp one of the famed Trapp Family Singers celebrated in the Rodgers & Hammerstein stage and film hit, "Sound of Music." Dr. Von Trapp's daughter, Elizabeth, is a freshman at the women's college.

PRESS PANTRY

During a holiday weekend it always seems as though all members of a family eat more and eat more often. Despite such appetites and attention to eating, today's homemaker, having slaved over the preparations of the Thanksgiving turkey and the multitude of garnishes to complement the dinner, would certainly appreciate an easy, yet festive dish to serve when the leftovers of Thursday's holiday dinner have disappeared.

The recipes listed below do not involve elaborate ingredients nor hours of preparation. In fact, little girls, future homemakers, that is, could easily assist in the making of these delicious party-time, buffet, and late supper recipes. The Fantan rolls can be served with any main course or for breakfast over the weekend; the filled shredded wheat shells are great for lunch and can be prepared in advance of the arrival of guests.



Raisin Fantans

Turn dough out on lightly floured board; knead until smooth and elastic, about 10 minutes. Place in greased bowl, turning to grease all sides. Cover; let rise in warm place, free from draft, until doubled in bulk, about 1 1/2 hours. Punch down and turn out on lightly floured board. Divide into three equal pieces; roll out each into oblong about 11 x 9 inches. Brush lightly with melted margarine or butter, then spread with about one tablespoon jelly. Sprinkle each oblong with raisins and nuts. Cut into seven equal strips. Pile strips on top of one another; turn top strip spread side down. Cut into six equal pieces. Place cut side up in greased muffin pan 2 1/4" x 1 1/4". Cover; let rise in warm place, free from draft, until doubled in bulk, about 30 minutes. Bake at 375° F. about 35 minutes. Makes 18.

over the weekend; the filled shredded wheat shells are great for lunch and can be prepared in advance of the arrival of guests.

At serving time the shells and the filling need only be heated separately, then the filling poured into the shells and garnished with parsley or paprika.



St. Mary's Pancake Breakfast Dec. 6th

Christian Family Unit will be the theme when St. Mary's Parent Teacher Assn. presents its first Pancake Breakfast on Dec. 6. UNICO's experienced pancake crew will provide delicious servings of pancakes topped off with whipped honey-butter and sausage, coffee, tea or milk. All this for only 99 cents. Table settings will be arranged for all size families large or small. The first serving will be at 8 a.m. running continuously until 4 p.m. So you won't be disappointed please make a reservation with Mrs. Paul Philbrin at 567-9456 or Mrs. Lee Frichione at 567-3158. Tickets will be sold

At serving time the shells and the filling need only be heated separately, then the filling poured into the shells and garnished with parsley or paprika.

Sweet doughs take to the fantan shape just as plain doughs do. In addition, extra flavor can be added in the form of filling. Honey can be brushed on the dough strips before layering; or marmalade, or jelly as in the recipe below. Drained canned crushed pineapple, or chopped cooked pears or apples might be sprinkled over the dough strips. Let your imagination go on the filling for these rolls, but serve them often now that good "baking weather" is here again.



College Chorale Sacred Concert

A special Sacred Concert will be held at Faith Baptist Church, Broad Brook Road, Enfield, Tuesday evening, December 1 at 7:30. The concert will be conducted by the Baptist Bible College Chorale of Springfield, Missouri. It is an extra curricular singing group composed of 22 singing voices that has been in existence at the college for three years. During these three years, the Chorale has travelled and sung in eight states and has seen a tremendous response from young people to this ministry in song. The chorale is under the direction of Mr. Ed Stewart who is a Professor of Music at Baptist Bible College.

For a real top-of-the-morning brunch serve Eggs Jamaica, a tempting combination of eggs and mushrooms served in cereal cups. For you hostesses, this dish is just the ticket for carefree entertaining — it's easy to toss together, but still looks glamorous.

Ladle the flavorful creamed eggs into the cereal shells made of finely rolled shredded wheat. Serve this versatile, high-protein cereal favorite with Eggs Jamaica. Round out the menu with a fresh fruit plate.

Shredded Wheat Shells

8 shredded wheat biscuits, finely rolled
1/2 cup softened butter or margarine
2 egg whites, unbeaten
Mix all ingredients well. Press firmly against bottom and sides of large muffin pans. (For easy removal later, make bottom of each shell thicker than sides). Use a straight-sided water glass to press crumbs into place. Bake in hot oven (425° F.) 10 minutes. Cool. Remove from pans carefully. Makes 6 to 8 shells.

Creamed Eggs and Mushrooms

10 1/2 oz. can condensed cream of celery soup
1/2 cup milk
4 oz. can sliced mushrooms, drained
4 hard-cooked eggs, sliced
1 cup sliced, stuffed olives
1/2 cup grated process American cheese
1/2 teaspoon Worcestershire sauce
Heat soup and milk together, stirring until smooth. Add remaining ingredients and heat until cheese melts. Keep bubbling hot and spoon into shredded wheat shells. Makes 6 to 8 servings.

CHURCH NEWS

Enfield Congregational Church
The Junior High Young People of the Enfield Congregational Church will hold a dance on Saturday, Nov. 28 from 7:30 to 10:30 p.m. Music will be provided by the Joe College and the All Night Juggers. Refreshments will be included in the admission requested.

On Sunday, Nov. 29, the Church School will have a special activity Sunday. Parents are asked not to dress their children in their best clothes.

Dec. 2, Wed. evening, at 7:30 there will be an evening seminar for Church School teachers. Topic for the evening will be, "How to use audio-visual helps in the church school?" Also, teachers can get supplies for their Christmas projects.

The Creative Arts Group will also after all Masses on the preceding Saturdays and Sunday, Nov. 21, 22, 28, 29 and Dec. 5. Everyone is cordially invited and to bring their family and friends.

There will be a children's movie on Friday, Nov. 27, in the Church Hall from 1:30 to 3:30 p.m. The movie feature will be Walt Disney's "Misadventures of Merlin Jones" plus a Christmas cartoon. The donation is 50 cents. Refreshments will be sold.

Be a holiday winner at Bingo Wednesday night at 7:30 p.m.

Holy Family Church
There will be a children's movie on Friday, Nov. 27, in the Church Hall from 1:30 to 3:30 p.m. The movie feature will be Walt Disney's "Misadventures of Merlin Jones" plus a Christmas cartoon. The donation is 50 cents. Refreshments will be sold.

Be a holiday winner at Bingo Wednesday night at 7:30 p.m.

Saint Patrick's Church
Freshman members of the CYO will sponsor a Christmas Bazaar and Bake Sale in the Church basement on Saturday and Sunday, Dec. 5-6, after all the Masses. The purpose is to raise funds to finance future Christian Involvement projects. Anyone wishing to bake a cake or pie call Kate Mullen 745-3603, Marilyn Cardone 745-3773, or Lynn Cimino, 745-5945.

ALL FORMS OF Life And Health Insurance

- BUSINESS INSURANCE
- ESTATE PLANNING
- SELF EMPLOYED PENSIONS
- DISABILITY INCOME
- MUTUAL FUNDS
- INTRAVEST

TIMOTHY E. COLEMAN
TIM COLEMAN
901 Farmington Ave.
West Hartford, Conn.
Tel. 236-5911

SHOP PRESS ADVERTISERS

ODD CHALKING

WITH THE POSSIBLE EXCEPTION OF HERBERT HOOVER GEORGE WASHINGTON WAS THE U. S. WEALTHIEST PRESIDENT .87

FIDELITY FEATURES CO.

MEDICAL BILLS Can "Wipe Out" The Wealthiest, But With The BENEFITS You Get In Our HEALTH AND ACCIDENT POLICY, It Is Possible For You To Be THE EXCEPTION!

The BRIDGE INSURANCE AGENCY Hazardville
9 School St., 749-8357

Home Economists Professional Day

On Nov. 10, Mrs. Christine MacDonald of Enfield High School and Miss Diana Wiewel and Mrs. Anne Eckart of Fermi High School attended Professional Day for Home Economists at the University of Massachusetts in the new student center.

"Issues of the 70's" was the theme for the first day. The main speaker and other speakers for the various workshops represented the fields of Public Health, Child Development and Family Relations, Environ-

mental Arts, Consumer Economics, Medicine and Women's Liberation.

Dr. William Darity, Professor of Public Health at the University of Mass., spoke to the entire group on "Contemporary Issues in Human Sexuality and Sex Education." One of his main points was that "sex education was necessary for the development of good mental and emotional health." He also pointed out that the teaching of human sexuality is now finally being taught to medical students. A fact which he feels is very disturbing is that nurses' training schools, theological workers and teacher training schools are still not exposing their students to studies in the area of Human Sexuality. A panel discussion followed in which the members of the panel answered written questions from the audience. Dr. Christine Hillman moderated the discussion by presenting her position as being compara-

ble to the "Devil's Advocate." The members of the panel included Dr. Warren Schumacher from the University of Connecticut who punctuated his comments with probing questions such as "Are you willing to respect diversity?", "How can I be me?" and "Do you rally hear?"

Dr. Christopher Mamonas from Pittsfield who stepped in for Dr. Gage emphasized the role of parents and medical personnel in the areas of Human Sexuality. He committed himself almost entirely to the sentiments expressed by Dr. Darity. Noah Edminster, principal of Mahar Regional Junior and Senior High School pointed out, as an administrator, the responsibility and open-mindedness that is his concern when dealing with students, parents, teachers and taxpayers when Human Sexuality enters the curriculum.

Actual workshops attended by the teachers of Enfield were, "Developing a Nursery School," "Re-evaluation of Women's Role in Society," and the "Importance of the Pre-school Years in the Total Development of the Individual."

Henry Barnard Experiments With The Integrated Classroom

By Lance C. Johnson

As you walk into two third grade classes at the Henry Barnard School, you see an array of studies being carried on at the same time.

In one corner you see students studying math, in another reading; in still another section of the room children are writing. By the time you make a complete circle around the room you will find that all subjects are being studied at the same time in no definite order.

Your first reaction is one of dismay, but as you take a second look around you will notice that all the students are interested in what they are doing, and that much is being accomplished.

This new method of instruction is called integrated teaching. Integrated teaching consists of the studying of all subjects at one time with no definite order, with the restriction that all subjects must be studied during the course of the day.

The teachers who are instructing the two classes are Mrs. Yvonne Daigneault and Miss Jeanne Joyal.

According to Mrs. Daigneault, she and Miss Joyal were first confronted with the idea of the integrated classroom while attending a summer science seminar at the University of Connecticut.

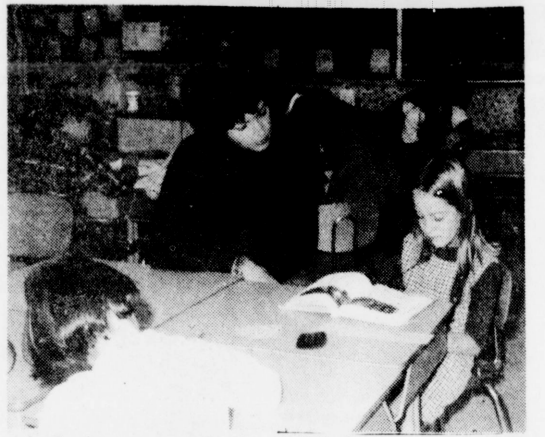
Mrs. Joyal explained that with an integrated class the students don't have to compete with one another, so pressure is taken off them. Mrs. Joyal added that discipline problems seldom occur because the students are not bored with what they are doing.

The students have four basic classroom rules: they are not allowed to run; they can't hurt anyone mentally or physically;

they must share; and they must be polite.

Instructional grouping is flexible. Although individual instruction is usually favorable, the class is instructed as a whole when the teachers deem it necessary.

The teachers carefully select the subject matter so that the materials are self directing and self correcting. The teacher only has to offer the exact amount of help the child needs in order to make him think for himself. Mrs. Daigneault explained



As the day progresses the students follow their schedule. If they are not in a "math mood" in the morning, they schedule

individual instruction is more readily attainable than it would be in a "normal" classroom situation.

Since the children are grouped heterogeneously, without regarding their past achievement or intelligence, they can proceed at their own level of achievement.

In the traditionally structured classroom students with extremely high and low abilities are often left out because the instructor has to structure her teaching around the average student.

The above average, or "gifted student," now has an opportunity to develop himself to the fullest extent. Also, the poor student won't become bored because he can't keep up with the rest of the class.

Another valuable asset of the integrated classroom is that it affords creativity and experimentation. Since the students are more or less on their own, it is necessary for them to



that the integrated class allows many things to be added to the curriculum so that the student's education will be greatly enriched.

No universal textbooks are used in the classroom, since the students are not studying in unison. A variety of textbooks are on hand and the pupils study from the ones that coincide with their ability.

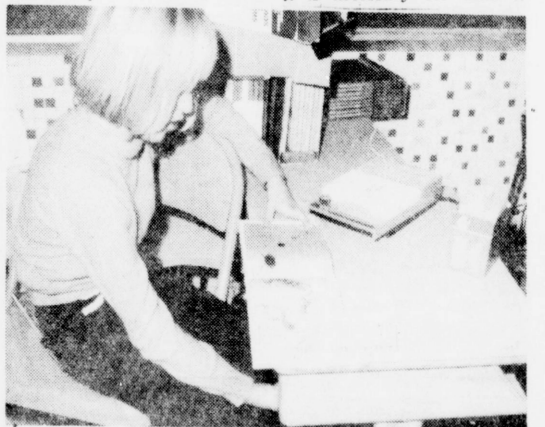
The students have daily assignments which they must hand in. Tests are given to determine the students' progress, and the students help determine their own grades.

According to Mrs. Joyal, the students meet with the teacher to discuss what grade they feel they should receive for the term. Mrs. Joyal added that the children are realistic concerning their grades, and it gives them a chance to know what they will receive before the grade cards are issued.

Students make out a sched-

ule in the afternoon, and read, write or study a few of the other subjects in the curriculum in the morning.

It is hoped that through this



program the lack of interest that is generally generated by making a pupil study something when he is not in the mood will

think for themselves. The students have a chance to think in depth without interruption.

According to Mrs. Daigneault, one parent a day is on hand to help the students with their problems, which allows for more individual instruction.

The parents who have thus far helped with instruction are Mrs. Robert Varnet, Mrs. Ralph Taraglioni, Mrs. Philip Bellico, Melvin Hogsett and Kent Scoville. Also, Charles Middlelaer, Roderick Kittell, Robert Olsen, Paul Koehler and Thomas Sylvester.

Chamber To Print New Town Map

The Greater Enfield Chamber of Commerce has recently undertaken the project of printing and distributing the new town map. This is a map showing all the streets in Enfield, new and old.

Since this is an enormous time consuming project for the chamber's staff of two, the services of Redwing Enterprises have been engaged. This new Enfield firm, under the direction of Gilbert Nadeau and Frank Catalano, both Enfield residents, will solicit advertising space on the town map.

It has been the Chamber's policy to underwrite the cost of the town map through the solicitation of advertising and this will continue to be the policy. It is extremely urgent to the town to have this map, and it cannot be done without the support of the advertisers.

The town map will have an enormous circulation. Over thirty-five thousand will be printed. It will be distributed to all residents of Enfield; to businesses in and out of town and to persons who write to the chamber in search of information at the Chamber office at 9 North Main Street at a cost of 25 cents each.

It is naturally the Chamber's hope that you will see fit to purchase an ad on the town map and help the Chamber to fill a much needed obligation and responsibility.

Do not hesitate to telephone the Chamber office at 745-3363 for any information you may require concerning the publication of the town map.

Sirloin 99¢

Steak lb.

Bone In Flavor Perfect



FLAVOR PERFECT

Porterhouse \$1.09

Steak lb.

- QUARTER LOIN SLICED FAMILY PACK CONTAINS END & CENTER CUTS **78¢ lb.**
- CALIFORNIA CUT CHUCK BONE IN **75¢ lb.**
- HOT OR SWEET **Italian Sausage 88¢ lb.**
- SUPER-RIGHT OR MORRELL **Sausage Meat 39¢ 1-lb. roll**

Turkeys

SUPER-RIGHT YOUNG GRADE A

34¢ lb.

SIZES 22 TO UNDER 24 LBS.

A&P GRADE A SELF BASTING

44¢ lb.

SIZES 20 TO UNDER 22 LBS.

SWIFT'S Canned Hams

DOMESTIC **3 lb. \$2.89**

FULLY COOKED - WATER ADDED

Smoked Ham Sale

SHANK PORTION **45¢ lb.** BUTT PORTION **55¢ lb.**

WHOLE or EITHER HALF **65¢**

WHOLE FOR FRYING OR BROILING 2 1/2 - 3 lbs. **Fresh Chickens 29¢ lb.**

FRESH ROASTING CHICKENS: 39¢

HOLIDAY SPECIALTIES

CAP'N JOHN **Shrimp Cocktail 3 lb. 98¢**

CACKLEBIRD FROZEN **Roasting Chickens 59¢ lb.**

OVEN READY FROZEN GRADE A **Fancy Ducks 59¢ lb.**

The Price

- of -

Filling Up

- IS -

GOING DOWN

at

ENFIELD

Getty

600 ENFIELD STREET (Next To Car Wash)

THE PREMIUM HIGH TEST WITH THE REGULAR PRICE!

A STATEMENT OF OUR POLICY

THANKSGIVING, 1970! Thankful, Yes, For the Men of this Community and Every Community Who are Fighting This Day in Muck and Blood of Vietnam for Liberty! Suggestion: - Let's Arise From Our Tables and BUY MORE BONDS! GOD BLESS AMERICA!

Brainard-Ahrens INCORPORATED

Insurance-Real Estate
Established 1854 Incorporated 1923
92 Pearl St., Thompsonville, Conn. 745-2417
16 Bridge St. Suffield, Conn. 865-2328

ONLY AT YOUR DELUXE A&P SUPERMARKET
202 SUFFIELD VILLAGE